

ALADDIN
HOMES



ALADDIN ALADDIN ALADDIN ALADDIN ALADDIN ALADDIN

North American Construction Co.

Bay-City, Mich.

OFFICE OF THE
Secretary-Treasurer

Dear Friend:-

Thank you for sending for our catalog. It's our only salesman.

With this catalog, you are able to keep the profits in your own pocket that you would ordinarily pay to your local dealers. Because we do not sell thru dealers, they can't add their four or five hundred dollar profits to the goods you buy from us. You keep this money yourself.

When your dealer says "Don't buy your lumber out of town," ask him where he buys the lumber he wants to sell you.

You see he buys his lumber up here and the only money that stays in your town is the dealer's profit. Wouldn't you rather have it in your pocket, than in his?

This catalog makes possible this saving--and many others. Study pages 2 to 14 very carefully, pick the house that meets your need, and write us. We have lots of interesting things to tell you about it.

Cordially yours,

A. Sovereign

Sec'y-Treas. & Gen. Mgr.

ROLL GOLDEN RULE ROLL GOLDEN RULE ROLL GOLDEN RULE ROLL GOLDEN RULE

ALADDIN HOMES

Built in a Day

Catalog No. 28
1916

WE extend to you a most cordial invitation to visit us at our Bay City offices and mills. We are always glad to welcome our customers and prospective customers and to offer them every opportunity to learn at first hand all the facts about our goods.

IMPORTANT: Read the following pages carefully.



NORTH AMERICAN CONSTRUCTION CO.

W. J. Sovereign, - - - President
O. E. Sovereign, Sec.-Treas. & Gen'l Mgr.

General Offices, Bay City, Michigan, U. S. A.

Complete houses shipped direct from our mills in Michigan, Louisiana, Oregon, Florida, U.S.A., and Toronto, Ottawa and Vancouver, Canada

Address all communications direct to home offices at Bay City, Michigan. Cable Address: "Aladdin," Western Union code

Canadian Branch: Sovereign Construction Co.,
C. P. R. Bldg., Toronto, Canada

INDEX OF SUBJECTS

Additions	93-94
Aladdin Selling Principle	3
Aladdin System of Construction	3
Arches	90
Barns	101-104
Bath Room Fixtures	111
Breakfast Rooms	84
Built-in Fixtures	89-90-91-92-114
Chimneys (see Masonry)	11
Comparison with Steel Construction	7
Department of Service	40
Disappearing Stairway	115
Doors	105
Electric Light Fixtures	108-113
Farm Buildings	116
Foundation Plans (see Masonry)	11
Freight	10
Furnaces	112
Furniture	109-110
Garages	99-100
Industrial Housing	14
Interiors	29-39-81-88
Interior Finish	11
Lath and Plaster	11
Lumber	9-10
Masonry	11
Materials used	2
Paints	106-107
Plaster Board	11
Reversing Floor Plans	2
Summer Cottages	95-98
Terms	2
Waste	5-10





The Aladdin House at a Glance

Center sill foundation timber cut to fit.
Joists, studding, rafters, and ceiling joists all accurately cut to fit.
Sheathing lumber cut to fit. Sub-floors cut to fit.
Steel joist bridging.
Building paper for all dwellings for side walls and floor linings.

All bevel siding, every single piece guaranteed to be cut and to fit accurately. Shingles or siding for the side walls, whichever preferred, will be furnished for any house at no additional cost.

Outside finishing lumber, all cut to fit.

Flooring, cut to fit. Roof sheathing, cut to fit.

Porch timbers, joists, flooring, columns, railing and posts, moulding, roof sheathing and roofing, all and every piece cut to fit except porch rail, uncut.

Extra Star-A-Star Cedar Shingles or prepared roofing.

Outside steps of all dwellings cut and shaped to fit.

All doors mortised and with frame and trim inside and out. Windows and frame, sash, and glass, and trim inside and out.

Moulded base board for rooms, not cut to fit.

Weather moulding for trimming all outside doors and windows, cut to fit. Crown mould, cove mould and quarter round mould, etc.

Stairways for all two-story houses cut to fit.

All hardware. Mortise locks, knobs, and hinges, tin flashing, hip shingles, galvanized ridge roll, window hardware, etc.
Nails of proper size for entire house.

Paint for two coats outside body and trim (any colors), putty, oils, stains, and varnishes.

Lath and plaster or plaster board for lining entire house.

Complete instructions and illustrations for doing all the work.

(Aladdin houses are always shipped under the freight classification of lumber with hardware, etc., listed under their respective classifications. See page 8.)

The floor plan of any house in this catalog will be reversed without extra charge.

TERMS

TWENTY-FIVE per cent. cash with order, balance C. O. D.
This is not meant as a reflection on your financial standing, but is an invariable rule. A discount of 5% is allowed from list prices where full amount is sent with order. For your convenience, we have shown the list price and the net price with each house.

An illustration: List price of house, \$1,000, 25% cash with order—\$250, balance \$750 C. O. D., or 5% discount for sending full amount—5%, \$50 from \$1,000—\$950, if all sent with order. You save \$50 by sending full amount with order on a \$1,000 house, other houses same in proportion. Cash discount is usually large enough to pay freight charges.

NORTH AMERICAN CONSTRUCTION CO.

General Offices, BAY CITY, MICHIGAN



REFERENCES:

Any Bank in the United States,
Bradstreet's or Dun's Commercial Agencies, Commercial Bank, First National Bank, or Bay County Savings Bank, Bay City, Michigan,
any city official or other citizen of Bay City, and our customers.

See inside back cover.

Address all communications Direct to Home Office
at Bay City, Michigan.

Copyright, 1916, by North American Construction Co., Bay City, Mich.

Note.—This Copyright protects each and every part of this book—type matter, illustrations, and floor plans. Use by any one without specific permission is expressly forbidden. Anyone attempting to build or copy Aladdin houses with material not furnished by this company will be swiftly prosecuted to the full extent of the law.

The ALADDIN PLAN



This is the Eleventh Year of Aladdin Success

ALADDIN Readi-Cut Houses—the Aladdin System of Construction—may be new to you, but the system was planned and put in operation eleven years ago. Its merit, its wonderful simplicity, was immediately recognized by the American public. The result is that each year the history of the business shows a doubling and trebling in the volume and number of houses sold. You know that this wonderful growth would be impossible for any manufacturing institution, or any business house, unless customers became friends—unless real service was rendered—honest value, square business methods, and integrity prevailed.

Integrity of the Aladdin Policy

Integrity means *moral soundness*; it means *honesty*; it means *freedom from corrupting influence or practice*; it means *strictness in the fulfillment of contracts, uprightness, square dealing*. The Aladdin policy of doing business endeavors to live up to the strictest meaning of *Integrity*. The customer must be well served—must be satisfied—must be pleased—*must be a friend*. The *Golden Rule* must govern every transaction. You who read this are entitled to know the truth of the above statement. Well, then, demand of us that proof in whatever way you wish.

Shall we give you bankers, congressmen, postmasters, city, State or National Government officials, or, better than all, shall we refer you to *customers who have tested our integrity*, customers in your own neighborhood? The proof is yours for the asking.

The Aladdin System of Construction is Built on This Principle:

Modern power-driven machines can do BETTER work at a lower cost than hand labor. Then every bit of work that CAN be done by machines SHOULD be so done. The steel worker with a little hack-saw trying to cut and fit the steel girders of the modern skyscraper should be no more out of place than the modern carpenter cutting sills, joists, and rafters. The skyscraper framework is cut to fit by machines in the steel mills, marked and numbered ready for erection. The lumber in the Aladdin house is cut to fit by machines in the Aladdin mills, marked and numbered ready for erection. The steel system is twenty years old—the Aladdin system eleven years old.



Aladdin's Famous Board of Seven



Master Designers, Builders and Manufacturers

BEFORE this Board of Seven comes every Aladdin house for the acid test of perfection. No detail escapes the keen and searching analysis of these experts. The designer must prove his plans to the complete satisfaction of, First, the Master Designer, for accuracy; Second, the Master Builders, for practicality, strength, and structural harmony; Third, Factory Experts, for elimination of waste, standardization of lengths, and economy of costs. Unless the cost of these high-priced men's time could be spread over a hundred or more houses of each design the cost would be prohibitive. But when they spend two or more hours' valuable time on the design, drawings, and cutting sheets of an Aladdin house the cost is not all charged to that *one house*, but to *several hundred houses* of that *same design* sold during the year.

No other organization—but the Aladdin organization—can afford a group of high-calibred men such as this Board of Seven, because no other organization in the world produces and sells the vast number of houses and buildings produced by the North American Construction Company.

No other organization can afford to put such high quality into its goods—and no other organization does.

No other lumber manufacturer ever dared back his lumber with a dollar-a-knot guarantee.

This organization was called upon by the United States Government to cooperate with it in the production of an Ideal Cottage. This cottage was erected for the Government at the Panama-Pacific International Exposition at San Francisco and was awarded the highest honor and granted a medal.

Could higher recognition be received by any institution than this which was accorded to the Aladdin organization, and to Aladdin houses?

Aladdin's Board of Seven is waiting to help *you*.

"There is a feeling of character and individuality about Aladdin designs that is difficult to describe in words, and that most certainly does not exist in any other houses I have seen."

Twenty feet of lumber from a sixteen foot board—How it is done

To cut the sheathing for this gable



The carpenter usually takes an eight-foot board, a six-foot board, a four-foot board and a two-foot board and cuts them this way:



The carpenter requires twenty feet of lumber for the job. Aladdin takes a sixteen-foot board, cuts it this way:



and gets twenty feet of lumber at the cost of sixteen feet—and *you* get the saving.

THE wonderful money saving results of the Aladdin Read-Cut System will be understood after reading this page. Nowhere in the history of manufacturing or building since history began can be found an example equal to that which is a part of every day's work in the Aladdin designing rooms and in the Aladdin mills.

Think of taking a six-inch board sixteen feet long and getting twenty feet of six-inch board out of it!

Think of applying this system of saving throughout all the lumber used in building your home!

Think of your own good money it saves!

To eliminate waste by scientific planning, designing, and cutting of lumber is to save *your* money from the waste pile.

W. J. Sovereign, president of the North American Construction Company, conceived this tremendous thought, originated, perfected, and established the system. Imitators have been many the past three or four years, but not one has yet even approached Aladdin efficiency, nor has one yet established a success. It took six years of Aladdin success before any one had the courage to even attempt to manufacture houses in the footsteps of this company.

Waste — and What It Means to You

"Only thirty-five per cent of the original tree emerges in the form of a building."—SATURDAY EVENING POST.

SPECIAL investigation of waste in the construction of dwellings resulted in the following statement by a writer in the *Retail Lumberman*:
"A safe estimate of good lumber wasted in course of construction is twenty-five per cent."

These two bare statements are quoted from such unquestionable sources to give especial weight to our very conservative statement:

*You will pay for 18% waste
when you build the old way.*

Eighteen per cent of your money will pay for material *you don't get*—eighteen dollars out of every hundred spent in your home—wasted.

When this statement was first made by us it was ridiculed by the lumbermen. The passing years have wrought changes in their ideas until now, when pinned down, they will admit that it is conservative.

*We have reduced the item of waste
to less than 2%.*

The architect, in designing a house, seldom considers the subject of cutting material to waste. He lays out the dimensions of the house, places windows, doors, etc., without any thought of how the material will cut. The contractor orders so many thousand feet of siding, of flooring, of 2 x 4, of 2 x 6, etc., without any thought as to the utilization of mill-run lengths. You, of course, know that sawmills cut logs in certain lengths, 12 feet, 16 feet, 20 feet, and it comes through the planing mill in those same lengths. It also comes to the contractor in the same lengths. When the carpenter cuts the siding to fit between two windows, the windows may be 10 feet 1 inch apart. He has to take 14 pieces of siding each 12 feet long and cut each one of them 10 feet 1 inch, wasting 1 foot 11 inches, or about 18% of good lumber absolutely wasted. The principle is the same throughout the entire house.

This waste is eliminated by the Aladdin designers and the Aladdin Readi-Cut system.

Our buyers go actually into the woods, confer with the owners and cutters of the timber and buy the right lengths that will come out of the woods, through the sawmills and into our own mills in the right lengths. We don't take raw material in lengths and sizes as it chances to come, but as *it should come to conform to our standards*. In many instances the cross-cut saw in the hands of the woodsman is directed by our needs so that no other saw is touched to the lumber at any time.

Each one of our special gang cut-off saws is designed to cut 50,000 feet of studding and joists every day. It does the work that would require a veritable army of carpenters to do, and it does it with the wonderful perfection and accuracy of high-class machinery.

You can easily imagine the dollars saved to *you* in the cost of *your* home, accomplished by this remarkable system; a system of *saving waste* that reaches into the very forest and untiringly searches every item, every operation, every movement to cut out and to eliminate the waste of *your* money.

When the architect overlooks something or makes a mistake, *you* pay the bill; when the contractor overlooks something, or makes a mistake, *you* pay for that, too; and when the carpenter uses poor judgment, overlooks something or makes a mistake, *you* are the one to stand the cost of his mistake. It's always your money—not the other's.

The more brains, the more organization, the more counsel given to any matter the less chance for mistakes, and the Aladdin Board of Seven, described on another page, is *your* safeguard.



"Big Ben": The most wonderful woodworking machine ever built. It does the work of 100 men every day.

From the Pyramids to the Woolworth Building

TO him who says the Read-Cut System is not possible or practicable, point to the Pyramids of Egypt, refer to Solomon's Temple as described in the Bible, or inspect Washington Monument, or the 57-story Woolworth Building in New York City. You will find that each was prepared, erected and completed by the Read-Cut System. But it remained for W. J. Sovereign to first apply the system to *your* benefit in the building of a home. And thousands of American families scattered over this broad land will testify to its economy and practical success.

The pyramids aren't portable, the Woolworth Building is not portable, *nor are Aladdin houses portable.*

If you attempted to tear apart, or dissect an Aladdin house, the most expert contractor could not tell it from any other first class frame dwelling because *there is no difference.*



Read-Cut System of Construction.



Here is a striking illustration of the Read-Cut System of construction successfully used for twenty years in steel-building construction. Note the "studding" for the two side walls, all in position with the "joist hanger" placed. These studs are about thirty feet high. In the foreground are shown some of the rafters, with the marks and numbers indicating their respective positions—"6201-16-Col-22." There is no fitting or cutting on the ground. The sawing, measuring, and fitting were done in the steel mills in Pittsburgh. How can they do this work? Why, the structural engineers know how. It's their life-work. So it is with Aladdin Read-Cut houses. The same principles govern each job. *It's the same system.*

The Curtis Publishing Co.'s Opinion of Aladdin Houses

The Saturday Evening Post, The Ladies' Home Journal and The Country Gentleman are owned and published by the Curtis Publishing Co., of Philadelphia. The following statement was written, signed and published by them:

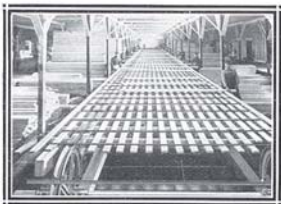
"Today Aladdin's houses stand in every part of the world, from Saskatchewan to the Tahiti Islands, in hot and cold climates. There are whole communities built of Aladdin houses. As many as 200 homes have been sold in three months to the same purchasers—large industrial concerns which house their own employes. In the offices 120 girls are employed to handle the correspondence, which has amounted to more than 300,000 pieces of mail in one month. The business is growing tremendously. The lumber mills (some of which it owns) are working at top speed, producing forty houses a day, at prices ranging from \$138 to \$8,000 each."

And this from "The Canada Lumberman"

"Year after year the price of carpenter labor has been advancing, thus making the cost of lumber higher when in position. Framing material will eventually have to come to the building trimmed to length, and I fail to understand why this fact is not more generally realized. The piece stuff of the future will be furnished to the building ready for position. This thing of cutting and cutting with a handsaw at the building site until it fits, is too costly."

The United States Government

has given to the North American Construction Company, the right to apply to its product (Aladdin Houses) "*Sold By the Golden Rule.*" It has given the Company the *Exclusive Right*, backed up by all the patent laws. This recognition, this rare privilege, we are immensely proud of.



Largest conveyor of finished lumber in the world. It does the work of many men and horses.

The Wedge

A Monthly Magazine for Home Builders

Published by The North American
Construction Company

Full of interesting reading and pictures.
Sent to any address for one year
for 25 cents, stamps or coin

Sovereign Summer Cottages and Garages

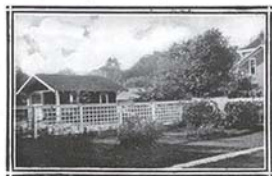
are illustrated and
described on
pages 95-100

Direct from the Forest to the Home

Stop and think what that means—"direct from the forest to you." It means that you are buying your house at the same price it costs if you lived right here—right where the timber grows—to build a house. It means that your house costs you no more than if you could go direct to a mill at the edge of the forest and buy the timber and lumber. It means that you are really doing that very thing—buying it from the mill at the edge of the forest. It means that you are *not* paying a profit to the big *jobber*, a profit to the big *wholesaler*, and a profit to the local *lumber dealer* at your home, and, on top of all that, the freight for shipping the lumber to the several places where each does business. The house is shipped to you "direct from the forest to the home." Another thing, each of the above lumber dealers, or middlemen, sells on credit. They all add from 5% to 10% to make up for bad accounts—losses which are charged up in your bill. We sell for cash only—we have no bad accounts, and are, therefore, not obliged to add enough charges into your bill to make up for the man who doesn't pay.

What You Get When You Buy an Aladdin House

Material that is not equalled by any other concern in the country, and it is not only perfectly cut to fit, but cut with a view of saving all waste which means a



direct saving to you. But the saving does not stop there. We mortise all doors to receive the lock sets, all interior finish sanded, and flooring steel scraped. In fact, everything that can be done by modern machinery, that under the old method of construction is done by the carpenter on the job, has been taken care of, which means another great saving in labor cost. Bear in mind that when you buy an Aladdin house that the foundation sill, floor

joists, the sub flooring, the regular tongued and grooved flooring, the studding, the wall sheathing, the siding, the window and door frames, the outside finish, the rafters, the roof sheathing, the steps, the stairs, all porch framing, is *readi-cut*, ready to nail into place. Just think, is it any wonder that we can save you such a big percentage of your labor cost, and then again the enormous quantities in which we buy our building paper, (which is furnished for between the side walls and floors), lock sets, double acting door hinges, window weights, nails, paints, varnishes, oils, stains, hip shingles, tin flashing, etc., sets them down at your door for less than a hardware dealer can buy them from the jobber. These are just a few of the reasons why we can demonstrate to your entire satisfaction that the Aladdin plan is the only true up-to-the-minute method of home building where the purchaser wishes the best materials obtainable at the greatest saving to himself.

The Lumber We Use

Every piece of framing and sheathing lumber in every Aladdin house has been carefully selected from the highest grade of Huron Pine. Clear and knotless Oregon Fir and Yellow Pine is used for all inside finish at the Bay City mills. From our Florida and Louisiana mills we use yellow pine. From our Oregon mill we ship all material in Fir. It is carefully inspected by experienced men, and if not up to a high standard is not used. This is an extremely important point and you should consider it carefully. Our facilities for buying high grades are unequalled by any manufacturer of lumber in the country. This means much to the purchaser—to know the quality of materials used, to know that the lumber and timber are the best; that it is well seasoned, sound, and of first quality throughout.

All the interior finish, doors, etc., are put through three separate sanding machines, making a beautiful finish.

Scores have written, "It would have been impossible to obtain locally finish at any price to equal that furnished in my Aladdin." [Such names and addresses gladly furnished on request.]

Aladdin's Famous "Dollar-A-Knot"



A NEW standard of lumber quality has been given to the world by Aladdin's famous "Dollar-A-Knot" Guaranty.

The "Good-enough" lumber grades, the "Anything-will-do" grades and the multitudes of evasive substitutions for Clear Knotless lumber have been shown up.

You cannot be expected to fathom the intricacies of lumber associations' manual of grading rules; how many circles, hearts, rings and barks make a good log, nor how many knots, spots, pitch pockets or worm holes there will be to a board.

There are none of these defects in your dollar, and there should be none in what you trade your dollar for.

"I'll Pay \$1.00 for every Knot"

any customer can find in our Red Cedar Siding shipped from Bay City. I stand ready to prove to you in this way that the lumber in Aladdin Read-Cut Houses is higher in grade throughout than is regularly carried by any seller of lumber in America. Clear and Knotless Siding, Clear and Knotless Flooring, Clear and Knotless Interior Finish, Clear and Knotless Shingles, and Clear and Knotless Outside Finish, are furnished for every Aladdin Dwelling House. Every piece of exposed lumber on Aladdin houses in 1916 will be *Clear and Knotless*. O. E. SOVEREIGN, Gen. Mgr., North American Construction Co.

Knotless Means Just What It Says

"A dollar a knot!" Could any guaranty be plainer, or more forceful, or more effective? You know a knot when you see it, and you know it makes a board less valuable. And when we guarantee Aladdin lumber to be knotless or guarantee "A Dollar-A-Knot" you *know* that your lumber is going to be the very *highest* grade taken from the forest.

"Hunting for Pieces"—Contractor

Of course, the Aladdin Read-Cut System receives adverse criticism from some contractors, lumber dealers, and others. This criticism comes chiefly from those who have had no experience with or knowledge of Aladdin houses. Self-interest, here prompted by loss of profit, begets the antagonism.

One of the most amusing remarks made is that the builder of an Aladdin house will lose as much time hunting out his material and finding the right piece as he will save by the Read-Cut System. Of course, this remark on the face of it is an admission that time is saved by the Aladdin System. However, any thought about time lost in hunting for pieces is immediately dispelled when one sees the simple system of laying out materials that accompanies the instructions for every house.

About Freight

One of the big advantages in buying an Aladdin house is the big amount you save on the item of freight alone. Your local dealer very rarely buys his lumber from the forest. He gets it shipped to him from his wholesaler at some near-by distributing point. The wholesaler usually gets it from some other middleman, who gets it from the sawmill. Every time the lumber is moved in its zigzag course through the middlemen, the freight charges pile up and your local dealer must add them all into the price you pay. When *your Aladdin house* reaches you the freight is the very lowest that is possible to move the goods to your station. It reaches you in a straight line from the forest. We use great care in quoting the freight and great care in routing it the most direct way. It costs no more to pay the freight upon arrival of your car than to send us the money with which to prepay it.

Lath and Plaster or Aladdin Plaster Board—Your Choice

Aladdin plaster board is the greatest single achievement in the builders' craft in the last generation.

Aladdin plaster board makes a splendid wall; it is easily and quickly put on; its remarkable construction gives absolute protection against extremes in weather; it is positively fireproof; it deadens sound.

In actual, carefully conducted, comparative tests a house lined with Aladdin plaster board requires 18% less coal to keep it at a temperature of 70 degrees than a house of identical size and construction, but which had the usual lath and plaster inside walls.

It will not crack with age, nor loosen from dampness, as will the ordinary plaster.

It comes in sheets 32 x 36 in. in size and is nailed directly to the studding. The plaster alone in Aladdin plaster board is equal in warmth to ordinary plaster while the layers of wool felt add materially to its protection value.

We also furnish a special Plasto-filler, which, when mixed with water, is used to fill all joints of the plaster board, giving a smooth wall, upon which you paper direct, or, as we sometimes recommend, you can put a putty coat or hard-plaster finish directly onto the board.

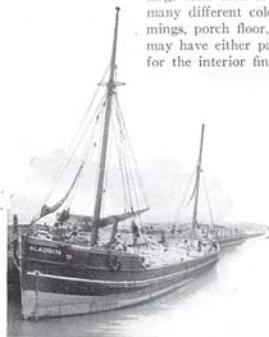
We will furnish either lath and plaster or plaster board, whichever is specified by the customer.



Aladdin Patented Steel Bridging: A great improvement on the old wood bridging. Will not shrink or split. Laid in one-fifth the time. Furnished with every Aladdin Ready-Cut House.

Painting

With every Aladdin house, paint of any color for two coats outside is furnished, oils, stains, and varnishes or paints for inside. You will be sent, on request, our large color card of many beautiful colors. You may select as many different colors as you wish to choose for body, trimmings, porch floor, porch ceiling, window sash, etc., and you may have either paint, oil and varnish, or stain and varnish, for the interior finish.



Masonry

Of course, all excavation and masonry work must be done on the ground. No money would be saved by including stone or brick or concrete, for every section of the country produces this material and prices vary but little. We furnish you with the foundation plan and will give you figures on the amount of material required for whatever kind of foundation material you decide to use—concrete, stone or brick. Fireplaces or chimneys may be built inside or outside and placed wherever desired.

GENERAL SPECIFICATIONS



IMPORTANT NOTE.—The pictures shown in this catalog are all actual photographs of Aladdin houses sent to us by our customers. There are no fanciful artists' drawings, or photographs of houses not built the Aladdin way. This cannot be said of any other similar catalog.

No single organization in the world ever equalled the vast experience of this institution in the designing and manufacturing of houses. The shipment of thousands of houses each year and covering a period of ten years at this work means exact knowledge—not theory—on the subject of *material and construction*. The grades of material, the sizes of timbers, their strength, location and installation in the building are determined by well defined engineering standards and our own exact knowledge gained from years of experience.

Below are given general specifications for the construction of Aladdin houses. The exact specifications for the house of your choice are sent you without cost just as soon as you write us about the house you like best.

Quantities

A binding guaranty is given to furnish sufficient material for the completion of each house in accordance with the following specifications.

Condition of Material

The company pledges itself to deliver your house to you without damage in shipment, or in transit. Anything damaged on arrival will be instantly made good *at our expense*.

Sizes of Timbers

All sizes of all timbers and lumber will be in accordance with well established engineering and architectural standards of safety and strength.

Quality of Material

All lumber is guaranteed to be of the highest grades ever marketed anywhere in the world. Every Aladdin house, regardless of size or price, comes under this binding guaranty. (Exception: Sheathing lumber is a fine No. 2 Huron Pine, and far better than the accepted standard for sheathing lumber.)

Height of ceilings, 9 feet first floor, 8 feet second floor.

GENERAL DETAIL SPECIFICATIONS

Foundation.—Material for foundation is, of course, not included with Aladdin houses, as concrete, stone or brick can be secured in one locality as cheaply as in another. Complete foundation plans are furnished you with detailed instructions for buying this material and building your foundation.

Sills.—Center sill, or sills, are, of course, always furnished to set into your foundation

of concrete, stone or brick. All sills are of a size to amply hold all strains and loads in accordance with engineering standards and good practice.

Joists.—All framed, dressed and cut to fit. All joists are of a size to amply hold all strains and loads in accordance with engineering standards and good practice.

BRIDGINGS, Aladdin Patented Steel Joist Bridging.—A great improvement on the old wood bridging. Will not shrink or split. Laid in one-fifth the time. Furnished with every Aladdin dwelling.

Sub-Floors (for both first and second stories in all Aladdin dwellings).—Inch lumber, dressed, all cut to fit.

Studding.—Size, 2x4 inches, all framed, dressed and cut to fit and placed on 16-inch centers.

Wall Sheathing.—Inch lumber, all dressed and cut to fit.

Rafters.—Size, 2x4 and 2x6 inches, all framed, mitred and beveled, dressed and, of course, guaranteed to be perfectly cut to fit.

Roof Sheathing.—Inch lumber, all framed, mitred, beveled, dressed and guaranteed to be cut to fit perfectly.

Shingles (Roof).—Extra Star A Star Cedar.

Building Paper.—Pure White Fibre, tough and dense, for side walls and between sub-floors and finished floors of all Aladdin dwellings.

Side Walls.—Dollar-A-Knot Cedar siding, every piece cut to fit perfectly; perfectly machined surface and without sap, stain or

any defects. Holds paint perfectly. Shingles for side walls instead of siding will be furnished for any Aladdin dwelling without extra charge.

Porch Columns.—All Colonial columns and square columns are of clear material and built with a lock-joint. Will never check or split.

Outside Finish.—All outside finish is of clear and Knotless Yellow Pine or Fir.

Window and Door Frames.—Built of finest clear fir, beautifully machined and finished.

Window Sash.—Of finest clear fir O. G. moulded, all edges and surfaces sanded and finished with great care.

Doors.—Inside doors five cross panel, size, 2 feet 8 inches by 6 feet 8 inches, carefully built of clear fir, all panels selected for attractive, velvety grain and beautifully finished on surfaces and edges. All doors mortised to receive lock sets. (See colored photographs, page 105.) All front doors of special design with glass in upper part. Double action door between kitchen and dining room.

Stairs.—Built from selected clear fir stock with especial attention to selection of grain. Newel post paneled sides and moulded cap and base, circle tread, steps, risers, railing and balusters carefully finished. All parts of stairs are framed, housed and machined to fit and the whole is carefully boxed by itself to insure arrival in perfect condition.

Interior Woodwork.—Baseboard, door and window casing all selected clear, beautifully machined and ready to receive the oils, stains and varnishes. Casings are of moulded and modern back band design.

Lock Sets.—Frosted brass in the oak leaf pattern. Front door sets have night latch and two way knobs.

Hardware.—Window weights, sash lifts, hinges, nails of all proper sizes, glass, putty, tin flashing.

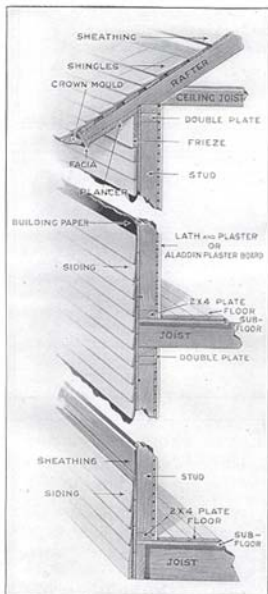
Paints.—The highest priced paint on the market is furnished for all Aladdin houses. It is manufactured of pure white lead, pure linseed oil and color. Thirty-two colors to choose from. Your selections may follow your own tastes for body, trim, porch floor, sash, steps, etc. See color chart pages 106 and 107.

Stains.—Johnson's Wood Stains, the best manufactured, are supplied for inside work. You may secure any effects you desire for interior decoration. Stain and varnish, or oil and varnish if you wish to finish in the natural wood, whichever you prefer. Shingle stain for roofs and lattice work under porch floors not included in prices.

Lath and Plaster.—You may have either lath and plaster or plaster board for inside walls, whichever you choose.

Outside Steps.—Steps of correct height and width for design of house. All cut to fit. Cellar stairs always included where shown on floor plan. All dimensions on floor plans are given outside to center for customers convenience. Send for foundation plan before starting your foundation.

All of which is covered by our all inclusive guaranty.



Industrial Housing Problems

A SPECIAL study of housing problems as related to industrial institutions has been made by the Aladdin organization. This study has been based on actual experience in building six new cities with Aladdin houses, and in furnishing groups of houses for many manufacturing concerns, mines in many localities and government projects.

We have handled almost every situation arising out of industrial housing necessities from a thirty-five room hotel furnished complete for operation; the building itself, heating, lighting, plumbing, furniture, stoves, dishes, silver, linen, carpets, rugs and decorations. We have on file, plans from which we have built dormitories, bunk houses, community dining halls, guard houses, bath houses, school houses, churches, offices and gymnasiums.

Our organization includes experienced landscape architects, engineers, construction superintendents, and all other factors for laying out, constructing and completing communities. See index page for pictures of Aladdin communities.

If interested, send for special information on this subject.



Aladdin Houses Sold by the Golden Rule

TEN years of success dealing with our customers earned for us the expression, "I know that you do business very much on the *Golden Rule* basis."

This came in the mail voluntarily from a customer who had tested our business principles over a period of several years, and who has reason to know whereof he speaks. This principle has been governing the work of this organization constantly, and it is surely gratifying to have it come to us in this way.

We have, therefore, adopted the expression and know that we have a real right to its use—as you will know when you join the big Aladdin family.

Can You Think of a Friend Who Expects to Build?

If you can, won't you send us his name, so we can mail him a copy of this catalog? In the circle of your acquaintance there should be several friends who ought to have one of our books. We will appreciate your service very much.

Extract From Letter From United States Government to Aladdin

"You have the opportunity and the equipment for good service in bettering the housing conditions of the great mass of people."—Nov. 13, 1914.



The Thelma



\$463.60

Price, \$488.00
Cash discount, 5%
Net price, \$463.60

AND now, after you have read the first pages in this book and know of the great Aladdin organization and understand how every sliver in the log is used without waste, your attention is directed to the *beautiful* in homes and to Aladdin's skill in building.

Home! Who loves their home more than the American family? Every day, father is looking forward to the time when he can provide a home for his loved ones—a place of comfort and enjoyment, shelter and protection. Mother has it all planned, has everything arranged. Her highest ambition is a home and its comforts. And every mother should have a home. The children—the ruddy faced kiddies—are anxious too for the great day. They want a home of their own and will love it and prize it as much as mother and father.

To this type of American family is dedicated the Aladdin home.

The Thelma seems to be really more than a home. It is really an additional member to the family that offers pleasure for the lonely, rest and comfort for the tired and shelter when it's stormy.

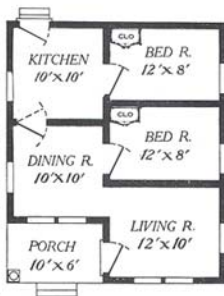
Study the floor plan again, imagine furniture, carpets and curtains in place, and a happy family seated comfortably in the living room or on the porch.

It would be hardly possible to get a better plan. The room arrangement is just right. Dining room, living room, kitchen and two bed rooms—and each with plenty of light. Note that both dining and living rooms have double windows facing the front.

The delightful exterior, the interior with its coziness and the low price quoted for the complete material are your assurances of the highest satisfaction.

If you decide *now*, one month from today you can be living in the Thelma.

See Terms on page 2 and General Specifications on pages 12 and 13.



Floor Plan—The Thelma

\$1
A Week
Outside

For The Country Home



Note the careful detail

no matter from what quarter the sun may shine, one can always find a shady nook in which to lounge.

Is not the second floor about your conception of a second floor for a countryside home? Large, well lighted and cool bed room which by opening the six windows can be made practically a sleeping porch, two closets off; storage room in abundance; and a large sewing room which would be equally available for the children's play room, or a fourth bed room. At a slight additional expense bath room quarters can be had on second floor.

After you have studied the possibilities of the interior arrangement and the artistic dormers, casement windows and pergola entrance we believe you will decide the Countryside meets your every requirement for that suburban tract you own or contemplate buying.

See Terms on page 2 and General Specifications on pages 12 and 13.

The Countryside

\$1,795.50

Price, \$1,890.00
Cash discount, 5%
Net price, \$1,795.50

Are you looking for a home for that delightfully located acre or five acre tract of yours? If so study carefully the attractiveness and possibilities of the Countryside. Whether nestled in a wooded vale, or used to cap a graceful knoll, it is equally attractive.

While the exterior is especially pleasing yet the interior arrangements possess possibilities equally alluring because of their adaptability to different requirements. Large living room with heavy beamed ceiling, two sleeping rooms with bath on the first floor, large, well lighted dining room, with butler's pantry and kitchen conveniently near, and porches located so that



First Floor Plan—
The Countryside





The Marsden \$1,355.65

Price, \$1,487.00
Cash discount, 5%
Net price, \$1,355.65

EACH year the sales of this attractive semi-bungalow far exceed the preceding year, and best of all its rapidly increasing number of owners are invariably delighted with their new home. We wish you could read some of the entertaining letters, without solicitation, received from scores of Marsden owners. They will of course be sent on request. Just study the lines of this bungalow and note how artistically appointed is every part,—the straight line dormer with exposed eaves in exact keeping with the cave of the front porch—the extended bay window with roof and brackets, breaking the gable end—the windows of different sizes and styles and location—these and many other points make the exterior of the Marsden truly artistic. Also note photograph of Marsden on page 14.

In interior planning and arrangement, this modern bungalow presents what might well be said to be the last word in designing. On entering the large living room, 26x36, extending across the entire front, one is attracted by the beautiful bookcase arch separating the living and dining rooms. Beautiful in itself, yet this arch by means of its glass doors and adjustable shelves forms at once a convenient, attractive and useful piece of house furnishings. Notice the abundance of light in living and dining rooms. A well arranged kitchen with stairs leading to grade landing complete the first floor. Ascending to the second floor by the semi-open stairs at end of living room, one enters a central hall from which easy access is gained to each of the three large bedrooms and the bath. Please note the clothes closet with each bedroom—a most appreciated adjunct for every sleeping room. The price includes everything above the foundation to complete the bungalow. Front steps, grade entrance and cellar stairs. Siding can be substituted if desired for wall shingles at no additional cost. See Terms on page 7 and General Specifications on pages 12 and 13.



First Floor—Marsden

Second Floor—Marsden

The Detroit \$899.65

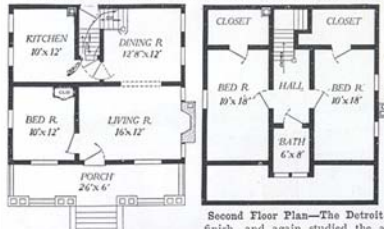
Price, \$947.00
Cash discount, 5%
Net price, \$899.65

AN enthusiastic owner of this attractive semi-bungalow wrote saying: "The more I see the Detroit and the longer we live in it the greater becomes our love for it. After a year, we cannot suggest how your architects could make it more attractive or your designers improve the arrangement. This I believe you will admit is exceptional because usually after giving a house that most sure test of actually living in it, you have some improvement or changes you would make. We have none."

Who will not agree that actually living in a house is the best test? We believe though the longer you study the design and arrangement of the Detroit, the more fully you will realize why this owner has no improvements to suggest. Without being gaudy it is attractive, without being elaborate it is simple. No attempt has been made to embellish, yet you could not add anything without really destroying—in short the Detroit seems to stand complete—with nothing to add or leave off.

Notice how the porch extending the entire width of the house has been made not a seemingly attached part, but a real part by carrying over the main roof lines, while the double porch columns seem to give just the right stability for this style of construction. Artistic grouping of different style windows; open cornice, exposed rafters, straight line dormer, and an especially artistic porch rail construction seem to leave nothing to be desired.

In interior arrangement the Detroit is equally pleasing. The pleasant living room has opening off from it at the left the downstairs sleeping room for those who wish, or the den or library for those that desire only sleeping rooms on the second floor. The broad arch way gives easy access to the well lighted dining room. Notice the combination of kitchen exit, basement and grade entrance. Compact, convenient and protected. The well lighted kitchen with abundant wall space is especially pleasing to the housewife. Our attractive semi-open stairs lead to a central hall on second floor off from which open the sleeping rooms and bath. Notice the size of the bed rooms—each of which has a large clothes closet. After in your imagination you have inspected the interior with our beautifully grained, knotless fir finish, and again studied the artistic exterior, we believe you will agree with the many delighted Detroit owners,



First Floor Plan—The Detroit

Second Floor Plan—The Detroit



The Grant \$649.80

Price, \$684.00
Cash discount, 5%
Net price, \$649.80

Marked by individuality and a charm all its own, the Grant offers a type that has the advantage of three bed rooms. While it is of the story

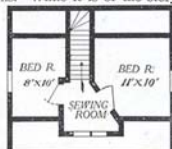
and a half design, it maintains excellent bungalow lines. The gable roof porch with grouped columns and built up rail is a notable divergence from the ordinary. The dormer windows nesting on the roof give light and air to the upper rooms. Double and triple windows afford the same advantages to living room and dining room. The Grant will give you a great big value for your money and will always be highly satisfying.

Here is another point: Aladdin Houses are always shipped by fast freight. Seven mills—four in the United States and three in Canada—save you money in shipping, no matter where you live. Your order is ready for shipping a short time after it is received. It is not necessary to hire carpenters to erect your home—you can do it yourself. Why not take a short vacation when your house arrives and put it up yourself? It is simple. Every piece is marked and numbered. Instructions, which are very clear and easily understood, tell you how to advance with the work. And think of the joy you would find in building it yourself! Think of the pride you would take in telling your friends that you erected it, and besides, think how much more you could save!

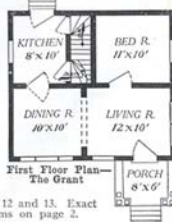
Many Aladdin owners, finding it impossible to do all the work themselves, hired day labor to start the erection of their homes and completed it in spare time, before and after work.

Save the dealer's profits, the middleman's profits and the builder's profits—Aladdin guides you in the work, from the first nail to the last coat of varnish on the inside finish.

Why not plan on building your home—the Grant—during this year's vacation? See General Specifications on pages 12 and 13. Exact detail specifications will be sent you upon request. See Terms on page 2.



Second Floor Plan—The Grant



First Floor Plan—The Grant



The Virginia



\$1,193.20

Price, \$1,256.00
Cash discount, 5%
Net price, \$1,193.20

HERE'S a home. From every view it breathes a welcome, inviting you into its big, strong, protecting walls to find comfort, pleasure, and satisfaction. From the front it strikes you pleasingly, and, as you approach, the impression is heightened by the finished detail of roof, eaves, columns, and porch work.

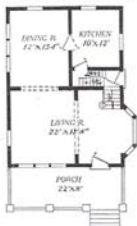
The Virginia is a popular design among Aladdin customers. It has been erected many times thruout the country. Owners are loud in their praise of it. Dr. Corn, of Ohio, writes as follows: "The material was excellent and every piece fitted exactly."

Mr. J. F. Kugler, of Pennsylvania, in a letter says: "I saved between \$300 and \$500. I have a fine home—The Virginia."

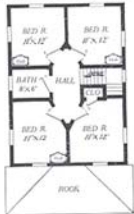
Mrs. M. E. Lloyd, of Florida, who has erected two Aladdins, in a letter says: "Everything went together like clock-work. My Virginia is a fine home."

Just inspect the arrangement of the interior. A living room that stretches from the bay window on one side of the house to the other, twenty-two feet, with the dining room separated by a wide arch—a freedom and expanse usually found only in much larger houses. Kitchen, four bed rooms, bath, and closets complete this beautiful home. It is built to satisfy the hardest to please. It is a continual delight to every owner.

See Terms on page 2 and General Specifications on pages 12 and 13.



First Floor Plan—
The Virginia



Second Floor Plan—
The Virginia





The Brighton—Showing Beautiful Interior

The Brighton

\$877.80

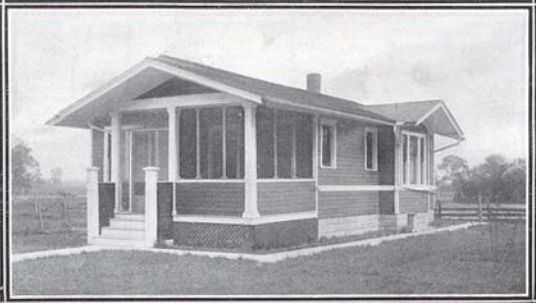
Price, \$924.00
 Cash discount, 5%
 Net price, \$877.80

MOST excellent taste is shown in the planning and arrangement of this charming home. Happy indeed must be the wife who pre-

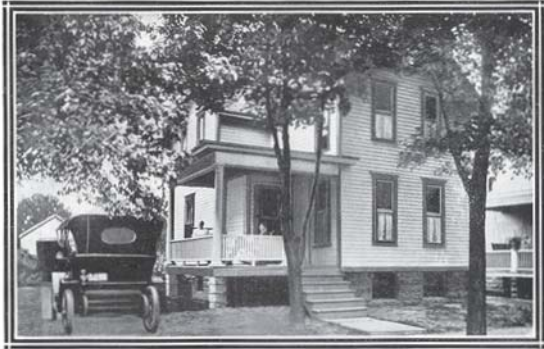
sides over this establishment, and could you suggest a single improvement in the arrangement of the living room? A big, comfortable, leather lounging rocker, library table partly covered by a leather throw and surmounted by reading lamp; magazines and books to invite a quiet hour of reading; tapestry wall covering and well planned hanging of pictures and clock! Beyond you, observe thru the columned arch a well appointed dining room, and then the kitchen. Convenient of access are the two bed rooms and bath.

And can the exterior fail to appeal to you with its clean lines, beautifully proportioned columns and withal, its extreme simplicity and purity of form? The porch is of excellent shape and generous in size. The triple window in the projecting bay of the dining room gives variety while affording a well lighted interior. Wherever the Brighton might be built it will compare most favorably with its surroundings and please its owner and neighbors.

See Terms on page 2 and General Specifications on pages 12 and 13.



Exterior—The Brighton



The Michigan \$832.20

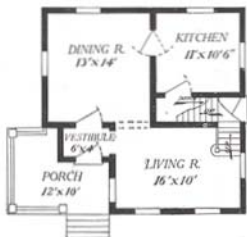
Price, \$876.00
Cash discount, 5%
Net price, \$832.20

HERE is a model six-room dwelling which offers unusual value for the price. The interior rooms are arranged for convenience, ventilation and plenty of light. The vestibule opens direct into either the living room or dining room. The upstairs bed rooms are well lighted. A good-sized porch with attractive turned pillars affords plenty of room for sitting out and enjoying pleasant weather. The Michigan is easily and economically heated, as it is practically square in proportions. Semi-open stairway in the living room with circle tread, and paneled newel post and grade cellar entrance give a most modern interior. All doors are of our beautifully grained natural fir and can be finished in any way desired by the tastes of the owner.

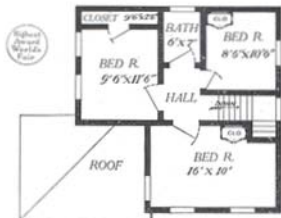
We have our "Michigan" completed, are living in it and are very much satisfied with everything. I know I saved between \$800 and \$900 and shall always be glad to recommend Aladdin houses.

—Samuel G. Long.

See Terms on page 2 and General Specifications on pages 12 and 13.



First Floor Plan—The Michigan



Second Floor Plan—The Michigan



The Rossley \$3,040.00

Price, \$3,200.00
 Cash discount, 5%
 Net price, \$3,040.00

ARE you interested in the Old English style of architecture? If so, we are certain that you will be delighted with the Rossley. Every detail reveals the careful attention that has been given to make this home artistic, modern and convenient.

Notice how the front entrance from grade is protected by the heavy overhang forming the balcony to second floor landing. Passing through this beautifully designed front entrance one enters a large vestibule, and double French doors. Ascending by wide steps to the first floor, one is charmed with the view and pleased with the arrangement. Directly in front are the double glass doors affording an excellent view of the den; to the right a large door leading to the attractive and well lighted dining room, while to the left and rear are the doors leading to kitchen, breakfast room and side grade entrance.

On entering the large living room, one is delighted with the plan, which includes large French doors leading to the sun parlor. The sun parlor has the center pair of each set of windows swinging open, thus affording in pleasant weather a delightfully protected and secluded open porch. Opening off from the den at the rear is a glass door leading to another semi-open porch. On returning to the front hall, the visitor at once is attracted by the massive yet artistic stairway leading to balcony and second floor. We wish you could stand there to see for yourself. The massive square column, the wide, easily ascending stairs, the large, brilliantly lighted balcony combine to make this one of the most attractive and unique plans. It is so far removed from the ordinary, so massive and yet so artistic, that it becomes a distinctive feature in the architecture of the Rossley.

Each of the four well lighted bed rooms on the second floor has a large clothes closet in connection. Convenient stairs lead to a well lighted third floor.

The home from which this picture was taken was built by us in Bay City and is finished in stucco or pebble dash, and the roof has every fifth row of shingles laid double to give the ridged appearance so easily seen. If desired shingles or siding can be furnished for side walls.

See Terms on page 2 and General Specifications on pages 12 and 13.



Second Floor Plan—The Rossley



First Floor Plan—The Rossley



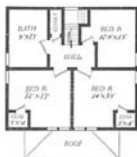
The Rosewood \$997.50

Price, \$1,050.00
Cash discount, 5%
Net price, \$997.50



First Floor Plan—
The Rosewood

THE lover of large living rooms will find in the Rosewood something to appeal strongly to him. The plan gives a living room sixteen feet wide and fourteen feet deep. At the rear of the dining room is our standard semi-open stairway, while windows admit an abundance of light. Both dining room and kitchen are unusually large for this size home. Upstairs are found hall, three bed rooms, bath and closets. Wide eaves, with shingled gable above the belt and shingled dormer walls, offer a splendid contrast. These shingles stained a dark brown, siding in a rich cream and trimmed with white, make the Rosewood the prettiest of homes. Seven



Second Floor Plan—
The Rosewood

splendid rooms with bath complete this most excellent home.
See Terms on page 2 and General Specifications on pages 12 and 13.



Floor Plan—
The Ruby



The Ruby \$444.60

Price, \$468.00
Cash discount, 5%
Net price, \$444.60



A TRIM little home of four rooms. Shingled exterior, stained in dark brown with trim in white makes the Ruby one of the most attractive of small bungalows. The bungalow effect is admirably secured by the wide exposed eaves, low pitch and shingled side walls. Solid shingled porch rail also gives it bungalow distinction. A good-sized living room and dining room with kitchen and bed room make up the floor plan for this cosy design.

See Terms on page 2 and General Specifications on pages 12 and 13.



The Herford—With Four Bedrooms

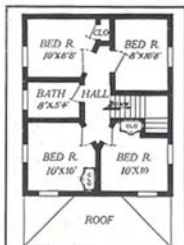
\$793.25



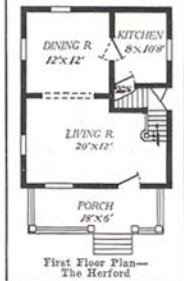
Price, \$835.00
Cash discount, 5%
Net price, \$793.25

THE Herford is an achievement in building a two story, four-bed-room house at a price less than eight hundred dollars, yet the convenience and attractive appearance of this design is not impaired in the least. A large living room across the entire front, large square dining room and kitchen make an exceptionally convenient and roomy first floor plan. The second floor has four bed rooms and bath, with clothes closets. The large porch across the front and the grade cellar entrance are features of this design seldom found in a house at this price. Handsome front door with three-quarter length glass and wide window front the house. You couldn't possibly better the design and arrangement of the Herford, try as you might and it would be utterly impossible to find better lumber than is furnished, for it doesn't grow in any forest. The carefully built semi-open stairway with circle first step, paneled newel post and beautifully grained Fir lumber adds a pleasing tone to the interior woodwork. All woodwork is very carefully sanded and ready to receive the stains and varnish. The Herford would show up beautifully if painted like the Charleston, which is shown in colors on another page.

See Terms on page 2 and General Specifications on pages 12 and 13.



Second Floor Plan—
The Herford



First Floor Plan—
The Herford

The Villa

\$3,420.00

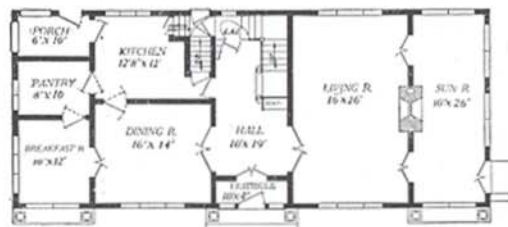
Price, \$3,600.00
Cash discount, 5%
Net price, \$3,420.00

IT is difficult to select words suitable to describe the beauties and convenience of this thoroughly modern home. While the architectural lines are strong, yet the artist has rendered them extremely pleasing to the eye. The pergola effect at the front and each side, combined with the stately columns, lends a certain dignity and grandeur that at once places The Villa in a class by itself. Like the beautiful everywhere, this house challenges the lover of the artistic and furnishes a concrete example of stateliness and strength which at the same time is an embodiment of the finest culture.

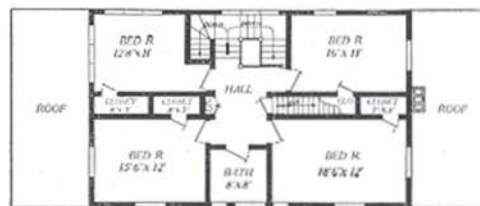
On passing through the vestibuled front entrance into the large and spacious hallway, the visitor's attention is at once attracted by the beautiful and easily ascending stairs at the rear, and on each side by the double French doors leading either to the living room on the right or the large dining room on the left. Without changing one's position, there is easily visible across the living room the French doors leading to the sun parlor. This sun room extending the entire width of the house, affords by means of the casement windows a protected porch in pleasant weather or a comfortable lounging room when the elements outside so dictate. The breakfast room, ample for a small family dining room, a butler's pantry, and a conveniently arranged kitchen complete the first floor. On the second floor, opening off a central hall, are the owner's room with bath and three corner bed rooms with closets. A large, well lighted third floor furnishes, when desired, convenient space for the maid's quarters. See Terms on page 2 and General Specifications on pages 12 and 13.



A BIT of OLD ITALY



First Floor Plan—The Villa



Second Floor Plan—The Villa



Genuine American Home!

This striking design has many delightfully original ideas. The pleasing proportion of its generous roof and the heavy timbered effects under eaves and windows, give stability and strength to the general impression. Study the hooded

front entrance supported by heavy brackets. A pergola type of porch covering just fits in the right way. Also note the heavy abutment-like porch piers. The exterior is rough cast stucco but is sometimes furnished with shingled walls, the shingles to be stained a pearl gray, or left to weather.

And what a splendid arrangement of rooms.

The reception hall is separated from living room by a wide columned arch with bookcases built in. French doors lead from living room to dining room. A breakfast room separates dining room and kitchen. Entrance to kitchen is from either breakfast room, grade entrance or reception hall. A large cloak closet is conveniently placed. The second floor has four good, light, airy bed rooms, closets and bath. The third floor gives an attic thirty by thirty feet. Could more conveniences be offered in any home of its size than are incorporated in the Lamberton?

See Terms on page 2 and General Specifications on pages 12 and 13.



First Floor Plan—The Lamberton



Second Floor Plan—The Lamberton

The Lamberton

\$1,995

Price, \$2,100.00
Cash discount, 5%
Net price, \$1,995.00



ALADDIN INTERIORS



LIVING ROOM, THE MASSACHUSETTS



VIEW OF THE MASSACHUSETTS

Did you ever see a more beautiful or a more homey living room than the above? It's a photograph of the Aladdin home of a university professor and you may be sure he is delighted with it and immensely proud. And he surely has reason to be, don't you think? You can just imagine sitting in that comfortable

arm chair, an interesting book and the Sunday morning sun creeping through the curtains to enliven the rich colorings in rugs and tapestry. Hardly less interesting are the other pictures on this page. Your Aladdin home will be of the same character, whether you choose the little Gretna, or the magnificent Massachusetts, or Villis.



LIVING ROOM, THE COUNTRYSIDE



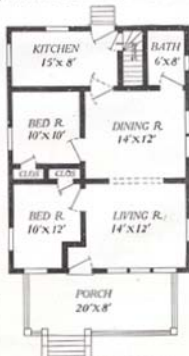
The Dresden

\$785.65

Price, \$827.00
Cash discount, 5%
Net price, \$785.65

THE DRESDEN will appeal to you as being an ideal home. The picture, which was taken on a midsummer's day, shows a number of features that are not found in the average home. Notice the porch—the shelter and relief it provides from the hot summer sun. Every inch of the one hundred and twenty square feet of floor space on this porch seems to hold a charm for the comfort seeker. And as much can be said of the inside of the home. Notice the picture, showing windows raised. It is possible to practically open up the home on four sides giving the utmost in ventilation, making all rooms light and airy, cool and pleasant.

Before reading further, look over the floor plan carefully. What do you think of it? Isn't it just right for convenience—doesn't it appeal to your ideas of "home?" Notice the long stretch—practically twenty-four feet—thru living room and dining room. The daylight rooms are arranged on one side of the home and possess every desired feature—plenty of light and air, spaciousness and ease in accessibility; adapted to any arrangement or setting of furniture. Plenty of space in the bed rooms with good closets in each, makes a home that will give you great satisfaction and much convenience. Your friends will agree with your judgment in selecting this home of homes—the Dresden. All of the pictures shown in the Aladdin catalog are from photographs sent us of actual Aladdin homes erected in different parts of the country by our customers. This is true of practically no other catalog. The photographs show what you can do with Aladdin's Ready-Cut System of Construction and Aladdin's Dollar-A-Knot lumber. See General Specifications, pages 12 and 13. Detail specifications for the Dresden will be sent on request. See Terms on page 2.



Floor Plan—The Dresden

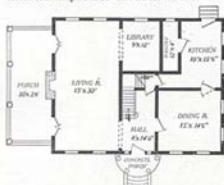
Exclusive Aladdin Advantages

Originators of the Ready-Cut System of Construction; Eight years longer in the business than any other concern; Dollar-A-Knot Guaranty; Highest Award at World's Fair; Customers in almost every community in the Country; Indorsed by Uncle Sam.

THIS modern home with its distinctive features has a large number of admirers. The general appearance, both design and arrangement of detail, place it in a class of its own. The general lines are taken from New England and Southern colonial architecture, while many original ideas are added. The windows with divided lights and simple dormers breaking the front roof, are purely of New England origin, often referred to as "severe, simple, and quiet."

Credit is due to Southern designers for the semi-circle porch and front entrance detail; also the broad and heavy side porch. The interior expresses modern ideas.

The large size porch is an excellent summer season auxiliary to living room, as both run parallel, with entrance doors on either side of the fireplace. Library directly adjoins living room. Dining room and kitchen arranged on opposite side of house are separated by entrance hall and staircase. Four corner bed rooms on second floor are well ventilated and easily accessible to hallway and bathroom. This home is fascinating in appearance and has much of the sought-for distinction. Of course you will want to know a great many things about the Colonial, if this handsome home appeals to you, things that there is not enough space to tell about here. Upon request we will send complete detail specifications and go into all the interesting facts. Write us about your ideas. See General Specifications on pages 12 and 13. See Terms on page 2.



First Floor Plan—The Colonial



Second Floor Plan—The Colonial

The Colonial

\$1,843.00

Price, \$1,940.00
Cash discount, 5%
Net price, \$1,843.00





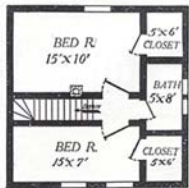
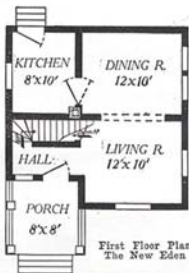
The New Eden

\$596.60

Price, \$628.00
Cash discount, 5%
Net price, \$596.60

THIS home, the New Eden, shows the result of careful planning before building—and it is surely gratifying to its many owners among Aladdin customers. On a ground space of 20x20 feet, this home gives more room, more comfort, more convenience than has ever before been obtained. Two stories, having two bed rooms upstairs, a hall, a living room, a dining room, a kitchen, an open stairway, a porch, and above all, an attractive looking house. It is so well liked by its many happy owners, that it is common for them to call it the "Wonder Home" on account of its low price, abundance of space, and its convenience.

Notice the features on the exterior. A broad belt across the front of the house divides first and second stories, giving a pleasing and harmonious effect. The half-sheltered porch is a pleasant feature and is well built for strength, attractiveness and harmony. The full length column, fronted by pedestals, makes a comfortable porch. The diamond paned window to the left of the front door gives plenty of light to the stairway and adds attractiveness to the front of the house and porch. Living room and dining room are divided by a wide arch, making them practically one room. Both rooms are well lighted and of good size. Notice the double window in the dining room. Two men can erect and complete this house in exactly six days. It can be done by any two men who are willing to work, assisted by our complete instructions and illustrations. See General Specifications on pages 12 and 13. Detail specifications will be sent you on request. See Terms on page 2.



A Fine Square House

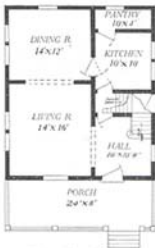


CAN you imagine a better utilization of space than is obtained in the plan of the Hudson? The constant thought of Aladdin designers is toward giving a maximum of convenience and comfort for the lowest possible cost. It is doubtful if this result has been exceeded by any other Aladdin house. Study the location of rooms and the placing of doors and windows. Hudsons have been erected in many cities and towns about the country and you may be sure that each creates much favorable comment by friends and neighbors of the owners. The arches dividing hall, living room and dining room give an impression of

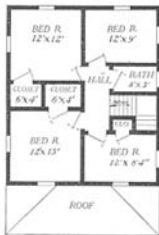
size and space that is most desirable. Entrance from hall to kitchen saves the housewife many steps. Four good bed rooms, closets and bath are arranged on the second floor. Four Colonial columns support the porch roof and a beautiful glass front door throws light into the hall, in addition to the side window, and the woodwork and floors are of the beautifully grained Western fir which is subject to any treatment you like. To lovers of simplicity in home architecture the Hudson always appeals strongly.

My "Hudson" purchased last year was very warm and comfortable this winter when the thermometer was twenty degrees below zero. The lumber was first-class and I am more than satisfied with my home. Everything was found as represented and no knots to be seen. If I were to build again I would build another Aladdin. — H. M. Pierce.

See Specifications on pages 12 and 13.



First Floor Plan—
The Hudson



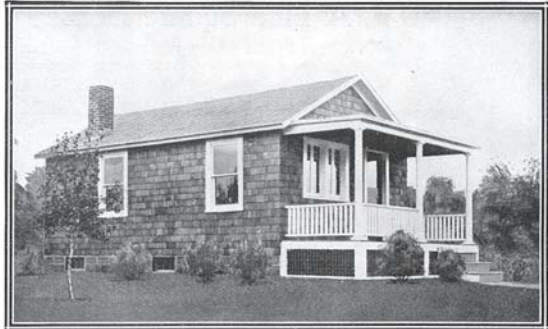
Second Floor Plan—
The Hudson

The Hudson \$1,094.40



Price, \$1,152.00
Cash discount, 5%
Net price, \$1,094.40





The Selwyn \$294.50

Price, \$310.00
Cash discount, 5%
Net price, \$294.50

THE Selwyn! Isn't it a little jewel? Here is a real bargain. Here is a home that will be a great credit to you, to your building spot, to any location. How can we manufacture and sell this ideal home at this price? Here's the reason. Stop and think that your order is received today and enters the mill. Tomorrow it is rolled out of the mill yards and is on its way to you. Probably the same train has three or four more orders going in the same direction. Your house is but one of the many that leave the Aladdin mills each day, because Aladdin sells at wholesale prices and saves you the dealers' profits. Many a man of moderate means would like to own his little home, but the dealer's price, from \$500 to \$800, is too much, and it is difficult for him to engage carpenters. To all such the Aladdin Read-Cut System is a blessing because they can build it themselves at a cost of simply their own time plus the cost of the material, or they can have it put up in a few days by day labor.

This little home of four rooms and attractive porch is a beauty. It is warm and strong—is built of the same high grade material as the larger Aladdin houses. Two men with no previous experience, following Aladdin's instructions, can erect this house in four days' time. You will take great pride in this Aladdin home—the Selwyn. The Selwyn and Erie will be furnished in size 20x24 feet instead of

16x20 feet as shown in these plans at an additional cost of \$84 net.

See Terms on page 2 and General Specifications on pages 12 and 13.

\$1
A Great
Lumber

The Erie

The Erie is the same as the Selwyn, except it has a large 10x16 foot room across front of house. Price of the Erie is \$304, cash discount 5%. Net price, \$288.80.

See Terms on page 2 and General Specifications on pages 12 and 13.



The Rochester \$1,366.10

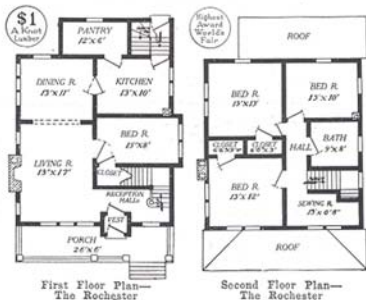
Price, \$1,438.00
Cash discount, 5%
Net price, \$1,366.10

THE Rochester is of the strong, substantial American type. Square lines give the advantage of utilizing every inch of space to good advantage, while this particular house incorporates some features distinctive to itself. Note the vestibule, large living room with cosy bed room having projecting bay window; group window in dining room; large pantry attached to kitchen and rear exit grade cellar entrance. Three bed rooms, sewing room, bath and closets complete the second story. Most of the windows are grouped in pairs. Scrolled rafter ends embellish the eaves. Taken altogether, the Rochester is a most satisfying home. On a one-thousand-dollar lot the Rochester would normally sell for at least \$5,500. You can easily comprehend the profit available to the owner should conditions arise that he would want to sell it. Owners of Aladdin houses find that the high quality of finish, material, both inside and outside helps make quick sales when a sale is desired.

The Rochester was first built up in Northern Minnesota and the owner is high in his praise of the warmth of Aladdin construction.

See Terms on page 2 and General Specifications on pages 12 and 13.

Be sure to send for detail specifications on the house you want. These are gladly sent to you without charge and will give you much information that cannot be gotten into a catalog page.





The Chester—A Shingled Cottage

\$448.40

BROWN shingles trimmed with white distinguish this little home from the ordinary looking cottages found in most communities. The Chester is a trim, neat, compact and pretty bungalow. Its five rooms are nicely arranged, its porch roomy and every room is well lighted. Note the spacious, airy living room that stretches the full width of the house and gives a view in both directions as well as in front. Arch separates dining room while two bed rooms and kitchen complete the home. You are privileged to choose any colors of paint and stain for shingles and trimming for the exterior, and you can have the most modern ideas worked out in your interior decorations with the wide variety of stains, varnishes and paints illustrated on our color cards. Most owners of the Chester write us about the pleasure they derived from erecting and completing it themselves. You can do this easily.

See Terms on page 2 and General Specifications on pages 12 and 13.

Barnard, N. Y.

"The Aladdin house is a rich man's house, but is in reach of every working man. I saved about \$500 on my bungalow."

—L. L. Huyck.

Price, \$472.00
Cash discount, 5%
Net price, \$448.40



Floor Plan—
The Chester,
Five Rooms

\$1
A Month
Later



The Roland

\$797.05

Price, \$839.00
Cash discount, 5%
Net price, \$797.05



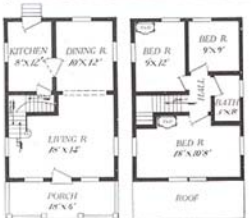
First Floor Plan—
The Roland

Second Floor Plan—
The Roland

A HOUSE with good lines outside and well arranged inside. Notice style of porch roof. This type hails from Kansas City. The gable placed broadside gives it an arch effect. First story in siding, second story shingles, or all siding, or all shingles can be furnished. One bed room across the front of second floor with two corner bed rooms at rear—bath room just off the hall between them. Living room, dining room and kitchen with pantry on first floor. The Roland is a great favorite, especially in cities where lots are often only 25 to 30 feet wide.

A very pretty effect is secured by painting the siding a gray, staining shingles a brown or green and trimming the entire house in white. Remember we furnish paint for two coats exterior and all interior trim. If you are looking for a six-room house with bath and pantry we are certain you will be pleased with the Roland.

See Terms on page 2 and General Specifications on pages 12 and 13.



First Floor Plan—
The Finley

Second Floor Plan—
The Finley



The Finley



\$698.25

Price, \$735.00
Cash discount, 5%
Net price, \$698.25

WHILE the Finley is popular with the owner of any sized lot, yet it finds special favor in cities where lots are sometimes as narrow as 30, or even 25 feet. The Finley can be built very nicely on a 25-foot lot and still leave ample space for a walk on either side.

In the Finley the architect has followed throughout plain, straight lines, yet when painted French gray or leather brown and trimmed in white, the owner of the Finley is invariably delighted.

A large, pleasant front porch, six rooms, bath and clothes closet are found in this remarkably low priced house. The ever popular plan is followed of a large living room across the entire front with wide arch-way leading to dining room. By a double-action door one enters the kitchen direct from the dining room. An attractive semi-open stairs leads from living room to second floor where there are to be found three sleeping rooms, bath and clothes closet. Those wanting a six-room, two-story plain house are invariably pleased with the Finley. See Terms, page 2 and General Specifications, pages 12 and 13.



\$1
A Knot
Lumber

The Sheridan Two Sizes

\$1,059.25

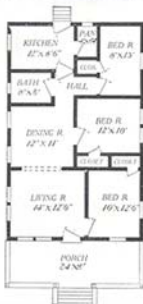
Price, No. 1, \$1,115.00
Cash discount, 5%
Net price, \$1,059.25

AN unusually attractive exterior and a sense of roominess are features that make the Sheridan one of our most popular bungalows. The low, sloping roof, the scrolled eaves and shingled porch and step rails, together with the siding, permit a great latitude in the decorative scheme and with the use of harmonious painting and staining materials, these features can be developed in a most pleasing manner. The expansive porch, which extends across the entire front, is well shaded by the broad overhanging roof.

Two convenient and inviting arrangements of the several rooms are outlined below. Your attention is called to the square and good dimensions of all the rooms, especially the living room, with its attractive group windows and arch leading to the dining room. Divided square lights are furnished for upper square sash of all windows, although they will be furnished with single large glass if preferred. Sheridan No. 2, price, \$1,260.00, cash discount 5%. Net price, \$1,197.00.

Few moderately priced bungalows offer so many real home comforts as can be found in the Sheridan.

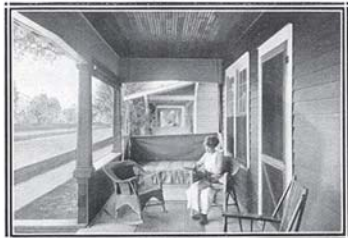
See Terms on page 2 and General Specifications on pages 12 and 13.



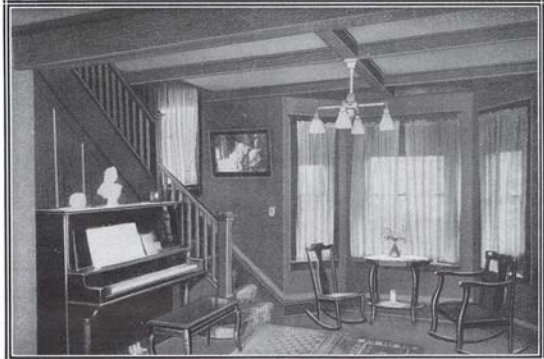
Plan No. 1—The Sheridan



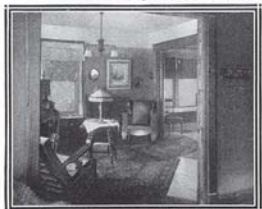
Plan No. 2—The Sheridan



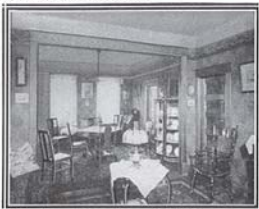
Porch, The Sheridan



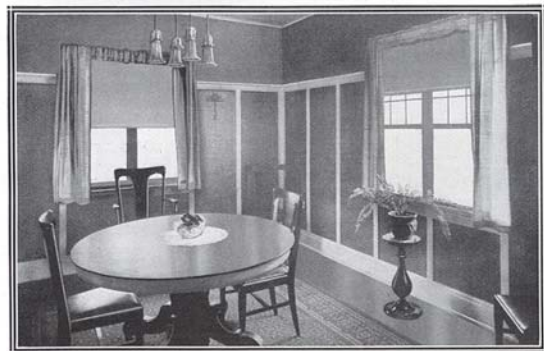
Living Room—The Virginia. Bay Window a Cozy Corner



View through Reception Hall into Living Room and Dining Room of the Hudson

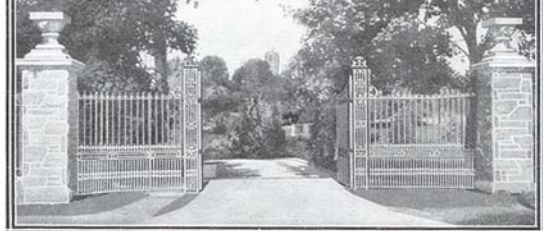


View from Living Room into Dining Room of the Kentucky



Dining Room—The Washington

DEPARTMENT OF SERVICE



D ID you ever really consider the wonderful difference in the meaning of the words house and home?

A house is a structure to live in.

Home—the dearest place on earth—is that structure that is a part of you—made so by its association with your family, their joys and sorrows, their hopes, aspirations, and fears. It is a refuge from the trials and struggles of the outer world. It is a visible expression of yourself, your tastes and character.

SERVICE!—that golden touch which changes the ordinary into the artistic.—It is that which is not bounded by the sale, but is added to complete or round out the transaction.

Aladdin's interest does not stop when the order has been received—but ever bearing in mind the many nice discriminations to be made in the locating, adorning, and surrounding of the home, the Department of Service was early established—to advise, direct or take full charge, as the home builders may desire, of this part of home making. As we have so often said, it is the use of such skill that changes a place to stay,—a *house*, to the dearest place on earth, a *HOME*.

Perhaps you find it difficult to express your tastes, as you feel them, when it comes to the arrangement, furnishing, and decoration of your home. You may not be sure of yourself. Right there is where our Department of Service can help.

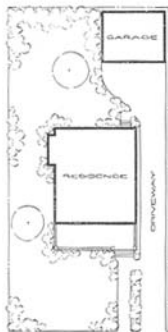
This department is in the hands of people trained in the planning and arrangement of artistic exterior and interior effects for the home—design, decoration, landscaping, etc. It is organized and maintained for a single purpose—to serve our customers. There is no charge for this service.

If you have a general idea of color in the exterior painting plan that you would like to follow, let the service department work out the details. In the interior finish and wall colors you may either put the responsibility entirely up to the department, or by suggesting general preferences, it will work to your suggestions and carry out the details.

By furnishing the department with the size of your grounds, sketches will be worked out for attractive planting of shrubberies, plants, trees, etc., with lists of seeds and vines.

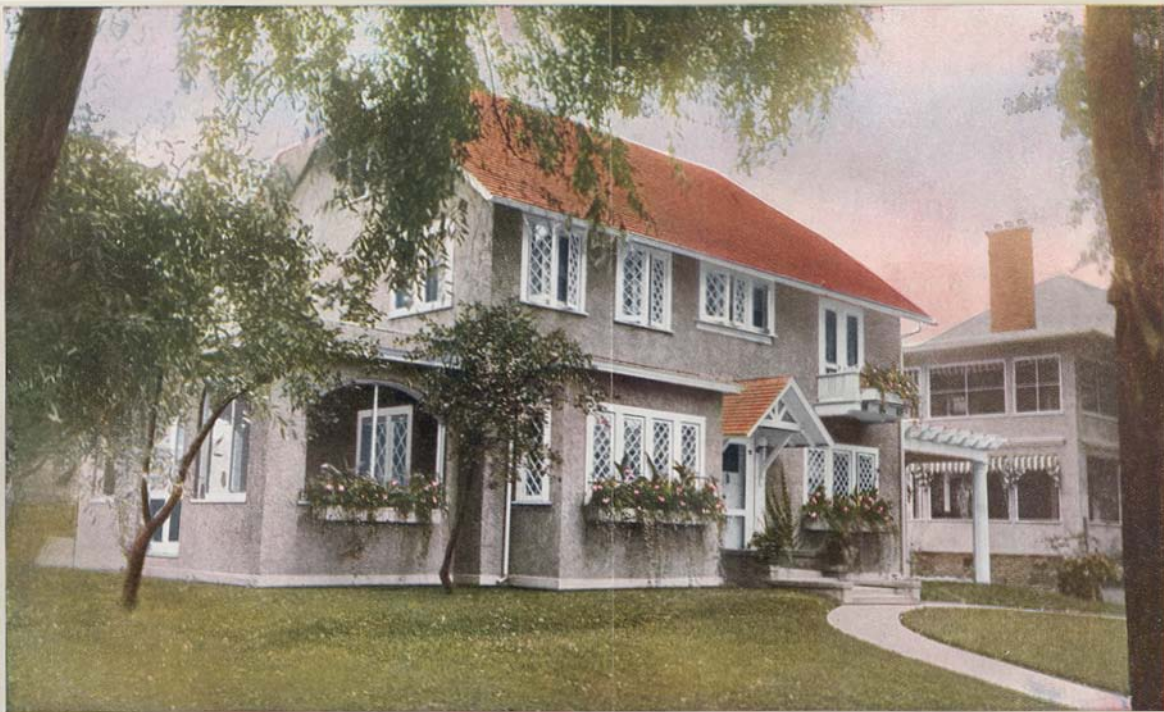
In fact, the Department of Service will help to make your Aladdin house *home*, in every sense possible.

In seeking this service you have only to address the Department of Service, care of this company. The service this company renders its customers in decoration and planting would cost from fifty dollars to five hundred dollars if you consulted the average landscape architect. It is but one of the links in the chain that forms such a close bond between our customers and us.



Example of Plan Furnished by Landscape Branch.

Send for our booklet of shrubs, plants and seeds. We will save you money.



The Brentwood

\$2,185.00

Price, \$2,300.00
Cash discount, 5%
Net price, \$2,185.00



First Floor Plan—The Brentwood

THIS most charming dwelling has a host of admirers. Its individuality is apparent in many ways. The broken roof, second story balcony, hooded front entrance, semi-enclosed porch, pergola porte-cochere with French doors leading to dining room, casement windows in front and full attic, form a delightfully attractive whole. The house will be furnished with either siding, shingles, or stucco exterior. The bay window projects three feet and is ten feet wide. The pergola at the side is furnished with tin roof, giving protection against snow and rain. This pergola can be furnished with floor, giving a side veranda instead of porte-cochere. A most unusual and distinctive idea is the little balcony with double French doors from the upper sewing room.

Note the sleeping room leading from sitting or dressing room on second floor. This gives all the advantages of the sleeping porch, with none of its inconveniences. This sleeping room has four windows. Linen closet is arranged in hall, a very large closet from the sewing room, and each bed room has a closet. The hall, both first and second story, is commodious, while a stairway of pure Colonial type is furnished. Built-in buffet in dining room attracts rooms for dishes, linen, and silver.

A Tennessee owner (name upon request) writes about his Brentwood: "My Brentwood is the admiration of the town. It was ready for plastering two weeks after the first nail was driven. I saved about \$700 with Aladdin's help." Could you wish for greater assurance of your own satisfaction than from the pen of this owner?



Second Floor Plan—
The Brentwood



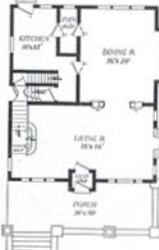
The Massachusetts \$2,133.70

Price, \$2,246.00
Cash discount, 5%
Net price, \$2,133.70

DID you ever see a more beautiful picture of its kind than the one shown here? A mass of lights and shadows softening the greens, browns and grays of the foliage shingles and cobble delights the eye. You can almost feel the touch of the sunbeams patterning the lawn, and you just want to stroll up the steps and into the inviting shade of the porch. Most effectively has the pure white that borders every outline been used to contrast the deep brown of the shingled upper story. The great nine-foot chimney of cobble stones is so much a part of the whole that it seems to have always stood majestically there, and the timbers been formed about it.

Examining further we find a living room of expansive dimensions, thirty feet one way and sixteen feet the other, with timbered ceiling. Matching the size of the living room is a dining room twenty feet in depth and sixteen feet broad; large enough for a real banquet. The kitchen, pantry and grade entrance occupy the other rear half.

The second story illustrates four bed rooms, bath and closets.



First Floor Plan—
The Massachusetts



Second Floor Plan—The Massachusetts

The Massachusetts eaves project four feet, rather a Swiss idea, and are supported by well proportioned brackets. The porte cochère at the left is a highly appreciated convenience in these days of automobiles. It is surely a home of most striking individuality.

See Terms on page 2 and General Specifications on pages 12 and 13.



Is it not a beauty in every line? Simplicity is the keynote, yet what could be added to improve its attractions? While it reminds one of the stately colonnades of old colonial mansions, it still retains the delightful atmosphere of modern American bungalows. The broad expanse of porch, with plain Tuscan columns and projecting eaves successfully blends these two most desirable types without losing the dignity of the one or the cozy hominess of the other. Double front doors seem to open wide a hospitality of true American spirit. Casement windows with divided lights swing into living

room, dining room, and bed room from the porch. Both living room and dining room are unusually well lighted. The Kentucky Bungalow has made a remarkable impression on our customers, having attained as great a degree of popularity as any design we have ever produced. The window blinds shown are included with the Kentucky. Study General Specifications, pages 12 and 13. Exact detail specifications of the Kentucky will be sent upon request. See Terms on page 2.

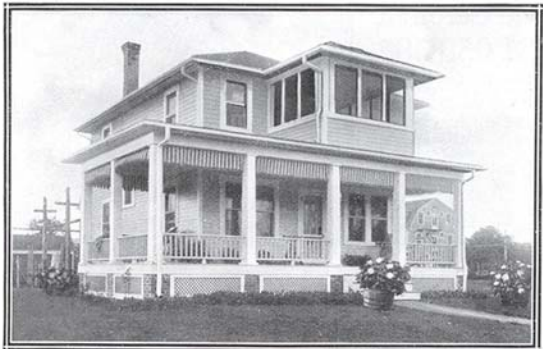
The Kentucky \$1,282.50

Price, \$1,350.00
Cash discount, 5%
Net price, \$1,282.50



Floor Plan—
The Kentucky





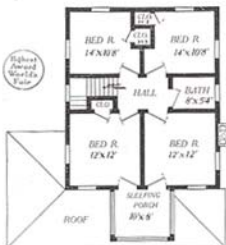
The Sherwood

\$1,368.00

Price, \$1,440.00
Cash discount, 5%
Net price, \$1,368.00



First Floor Plan—The Sherwood



Second Floor Plan—The Sherwood

THE lover of fresh air finds in the Sherwood an admirable type of home. Its most distinguishing features are the immense veranda, thirty-two feet long and sixteen feet deep at the side, and the big sleeping porch. The latter has space for two double beds, with doors leading into each front bed room. This sleeping porch is unusual in that it has exposure at three sides. The high enclosed railing gives protection from direct drafts while the wide, overhanging eaves keep out rain and snow. Every room in the house is excellently lighted and ventilated. Note the clean, square, tapering columns on the veranda. And the Aladdin Knotless Guaranty covers the material you receive, insuring the very highest quality in your home. The interior wood work simply cannot be excelled in texture, grain or finish. Our Department of Service has many interesting and helpful suggestions for you in the decoration, painting and planting. The Aladdin organization is the only one having a graduate landscape architect giving all his time to customers. Of course, there is no charge for his expert services to any Aladdin customer.

See Terms on page 2 and General Specifications on pages 12 and 13.

The Carolina

\$1,058.30

Price, \$1,114.00
Cash discount, 5%
Net price, \$1,058.30

\$1
A Knot
Cumber

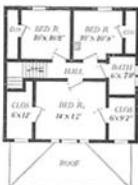
HERE is a strong, substantial-looking home that impresses every one. It has some exceptionally desirable advantages not found in any other design. In the first place, the price we have been able to place on it is truly astonishing for its



First Floor—The Carolina

conveniences. Four good bed rooms—think of it! One bed room is down stairs. Every bed room has a good closet, with an especially large extra closet in the front bed room. Two grouped windows flood the living room with light and air. Wide arch separates the dining room and living room, giving a 26-foot vista across the house. The massive roof with heavy grouped columns on porch gives a very substantial appearance. This house is certainly a credit to any owner.

See Terms on page 2 and General Specifications on pages 12 and 13.



Second Floor—
The Carolina

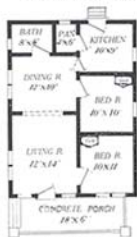
The Raymond

\$536.75

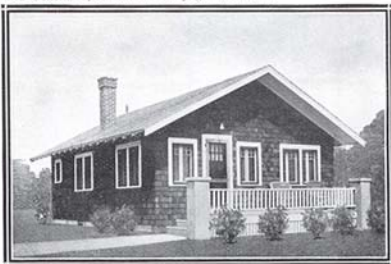
Price, \$565.00
Cash discount, 5%
Net price, \$536.75

FOR compactness, convenience and modern designing, the Raymond is among the leaders. When entering the front through the attractively designed bungalow door, one is at once impressed with the roominess of this apparently small house. This long stretch of nearly 25 ft. is secured because of the wide arch separating the living and dining rooms. In this, as in all Aladdin houses, the designer has kept prominently in mind the thought of modern arrangements, which in Aladdins is only another way of saying, "doing one's work with the least possible effort." Notice how the kitchen, apparently in the remote part of the house, is conveniently accessible to the dining room and pantry. These "step-saving arrangements" are the things that help to make "doing one's own work" a real pleasure. What housewife would not be delighted with the plan of the Raymond? Of course, the exposed rafters, casement windows and porch all contribute their part to make this little bungalow complete, attractive and modern. If desired, siding can be substituted for wall shingles without extra cost.

See Terms on page 2 and General Specifications on pages 12 and 13.



Floor Plan—
The Raymond



The Hamilton

\$997.50

Price, \$1,050.00
Cash discount, 5%
Net price, \$997.50

THIS is a very popular type of house in the smaller cities. It is of the half-shingled style, with a gable roof, porch, and split-roof dormer. A wide belt separates the shingled second story from the sided first story. Attic is ventilated by small gable window. Square columns rest on solid sided porch rail. It is one of the simplest and easiest to build of any of our two-story designs. The living room is of generous dimensions, and open stairway at the rear. Living room, bed room, dining room, and kitchen are down stairs, and four bed rooms with closets and bath are upstairs.

See Terms on page 2 and General Specifications on pages 12 and 13.



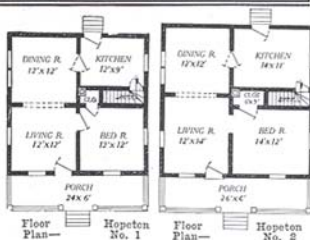
The Hopeton \$498.75

Price, No. 1, \$525.00
Cash discount, 5%
Net price, \$498.75

THIS attractive house is a very popular design, and has found favor in all localities. It presents a composite and harmonious design, very attractive from the outside and exceptionally convenient interior. It is a square house, such as many people prefer, and interior is arranged very attractively. The special design double window in dining room, with upper sash of divided glass, makes dining room very light and attractive. Arch leads from living room to dining room, closet off bed room, and cellar stairs off of kitchen. If desired, the dining room and living room will be supplied in one large 12x24 ft. room.

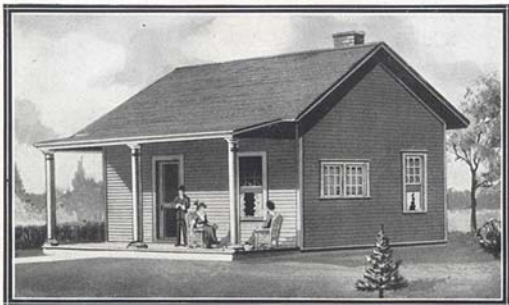
One particular feature of the Hopeton is that it is easily heated. A large number of this particular design have been erected in Northern countries where the thermometer usually falls to thirty or more below zero. One owner who heats his home with a hard coal burner used but three and one-half tons of hard coal for a severe winter of five months. Another owner, using the Aladdin Pipeless Furnace burned but six and a half tons in what he says was "the hardest winter I ever saw."

Price, No. 2, \$585.00
Cash discount, 5%
Net price, \$555.75



This house would cost not less than \$1,200 if built by a contractor, and is worth that amount in any part of the United States.

See Terms on page 2 and General Specifications on page 12 and 13.



The Rodney—A Comfortable Little Home

\$1
A Month
Lumber

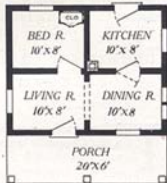
\$327.75

Price, No. 1, \$345.00
Cash discount, 5%
Net price, \$327.75

MANY good American families are living happily and comfortably in Rodneys. Its four cosy rooms are all well arranged and its generous porch serves in a delightful way the outdoor pleasures of summer. A handsome front door with glass in upper part and embellished with mouldings would suitably fit a more costly home. The double casement window in the dining room, with English sash made to swing in appeals strongly to the housewife. All upper sash are divided into small lights.

You have your choice of two sizes in the Rodney. No. 1 is 20x22 feet over all and has four 10x8 foot rooms. Price given above. No. 2 is 24x26 feet and has four 10x12 foot rooms. Price, \$390.00, cash discount 5%. Net price, \$370.50. In both designs a wide arch separates the living room from the dining room. You will be delighted should you decide to own this cottage.

Of course, you receive our famous Dollar-A-Knot siding and all the materials entering the construction are positively the highest grades found anywhere. Frosted brass oak leaf design lock sets set off the beautifully grained doors and woodwork. In fact, you will have as finely finished a home as anyone. Two men can erect this house in four days. Most owners of the Rodney did all the work themselves, easily.



Floor Plan—The Rodney



Rodney Dining Room

See Terms on page 2 and General Specifications on pages 12 and 13.

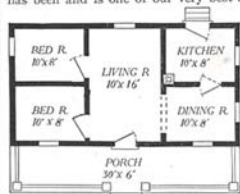
I am very proud of my bungalow and want to say that I received much better material than I could have bought here. It is admired by all. You may be sure when I build again you will get the order, for I saved nearly \$600 on this deal.

—S. R. Bartlett.

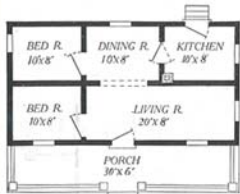
HERE is a complete five-room dwelling with all the beauty of simplicity of design. It has appealed so strongly to home builders and has met their needs so satisfactorily that you will find Gretnas scattered throughout the length and breadth of the land. It has been and is one of our very best sellers. The demand

for it is constant.

It is particularly desirable where ground space is not too expensive, as its width of thirty feet really requires a lot of forty feet or wider. Its long porch, sash door and casement windows give charm to the exterior, while the large living room, dining room, bed rooms, dining room and kitchen furnish as convenient and desirable an interior arrangement as can be had in a home costing much more money. Throughout you have the same excellent construction that is found in every Aladdin house, yet the lines of construction are so simple that scores of Gretna owners have built their entire house without any assistance from carpenters. The Gretna is distinctly a house for the home-loving man of moderate means, because without sacrificing attractiveness, convenience, or essentials, the cost has been brought within the reach of all. Either floor plan shown will be supplied at the same price. See General Specifications on pages 12 and 13 and Terms on page 2.



Floor Plan—The Gretna, No. 1



Floor Plan—The Gretna, No. 2



To Lovers of Gardens: Aladdin's Department of Service has compiled a pamphlet of shrubs, flowers and plants which will be sent you on request. We can supply you with trees and shrubs at a very great saving in cost, and to customers we also furnish plans for arranging your garden and expert instructions for taking care of it. Send for this pamphlet.

The Gretna

\$399.95

Price, \$421.00
Cash discount, 5%
Net price, \$399.95



The Pomona One-Story \$1,296.75

Price, \$1,365.00
Cash discount, 5%
Net price, \$1,296.75



If there is such a thing as personality in a home the Pomona surely expresses the feeling in every angle and line. Bathed in a hot summer sun's rays, its wide eaves, shady porch and many windows offer cooling protection; or blanketed by winter's snows it nestles snugly compact, and inviting the traveler to its protection. Walls of siding and shingles, building paper; sheathing, studding and lath

and plaster are equally good non-conductors of heat and cold. Externally, many interesting ideas are worked out and each blends naturally into the whole. Observe the tapered porch pillars of stucco, surmounted by clean lined columns of the same design. The chimney outline matches this plan, as does the rafter ends and the projecting ends of belt encircling the house above the water table. Brackets supporting the eaves are shaped differently than any other bungalow you ever saw,

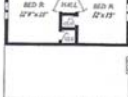
while the porch rail is embellished by a band running midway between the upper and lower rails. An especially notable feature of the interior arrangement is the abundance of unbroken wall spaces in all rooms. Can't you just imagine where you would place each piece of furniture? Two plans are illustrated, one story and two story.



Floor Plan—The Pomona



Floor Plan—The Pomona with second floor



In the one story, the front room is adaptable to use as den or bed room, in the latter case giving three bed rooms. Good closets are observable in both designs. Price, two-story, \$1,510. Net price, \$1,434.50. See General Specifications on pages 12 and 13. Detail specifications for the Pomona will be sent on request. See Terms on page 2.



The Charleston \$1,398.40

Price, \$1,472.00
Cash discount, 5%
Net price, \$1,398.40

THERE are many good points in the Charleston, a modern square-type design. The first noticeable feature is the deep bay windows in front, both stories, also on one side. These give free sight in all directions and ample light.

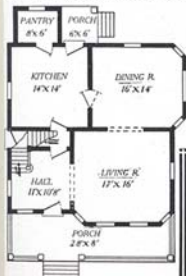
The interior arrangement is one for convenience. Front entrance is gained through a large reception hall with semi-open stairway and arched entrance to large living room. This feature has proven popular, as it can be used for one room and still retain the convenience of two.

The kitchen has proved attractive to busy housewives. A rear entrance leads to the back porch, while the grade entrance at the side leads to the outdoors and basement, saving many steps.

Four large bed rooms and bath are arranged on the second floor—plenty of light in all. All exterior walls of siding. Beautiful Colonial columns support porch roof and

a three-quarter length glass door adds greatly to the appearance. The Charleston is a good, substantial, roomy home.

See Terms on page 2 and General Specifications on pages 12 and 13.



First Floor Plan—
The Charleston



Second Floor Plan—
The Charleston



B

BEFORE reading this description, what did you think of the Edison? Well, it has impressed others the same way—as being one of the prettiest little bungalows ever built. And every owner is more pleased with the Edison after it is completed. When the beautiful lines of this home are fully realized—then it is possible to see the broad and expansive porch sweeping across the entire front of the house, also the careful formation of the roof covering the porch. And did you notice the broad eaves

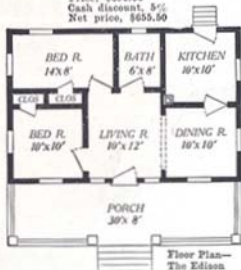
with exposed rafters? This feature seems to belong to this home alone. And the diamond divided lights in the upper sash are in complete harmony with the balance of the beautiful home. Study the interior, the arrangement of rooms. Isn't it ideal? The living room and dining room, divided by an archway are really one big room, but still they retain the convenience of two. Each sleeping room affords plenty of air. The bath room is well planned and is large enough for bath room fixtures with plenty of space to spare.

For design, convenience and price, don't you think the Edison is the prettiest little bungalow you have seen? And when this bungalow is stained a dark brown and trimmed in pure white you have a most artistic and beautiful result.

See Terms on page 2 and General Specifications on pages 12 and 13.

Edison \$655.50

Price, \$690.00
Cash discount, 5%
Net price, \$655.50





The Richmond \$1,396.50

Price, \$1,470.00
Cash discount, 5%
Net price, \$1,396.50

MANY things distinguish the Richmond and set it apart from most homes. It's human nature to want things just a little different from the average, or ordinary. And to one who really seeks originality, dignity and, withal, convenience, the Richmond will have a strong appeal.

An impression of dignity is first gained by the colonnade. Extra large Colonial columns excellently spaced support the expansive roof and give balance to the front elevation. Four windows in a single group compensate for the shadows thrown by the main roof, and these windows make the living room very light indeed. Two groups of triple windows in the dormer serve the double purpose of embellishing the roof and making an exceptionally interesting bed room on the second floor. Shingled walls and well balanced eaves are worthy your notice. A beautiful front door opens into reception hall with open stairway and an arch leads into a 14x18 foot living room. A cosy little den, or children's room is recessed back of the stairway. Another arch separates the dining room, which is 12x16 feet in size. Cellar entrance and pantry lead from the kitchen. The second story has five good bed rooms, bath and closets. The Richmond will meet every wish for the comfort and pleasure of a large family and will effect a saving of nearly \$1,500 to the builder, compared with usual construction costs.



First Floor Plan—
The Richmond



Second Floor Plan—
The Richmond

See Terms on page 2 and General Specifications on pages 12 and 13.



The Vassar \$1,282.50

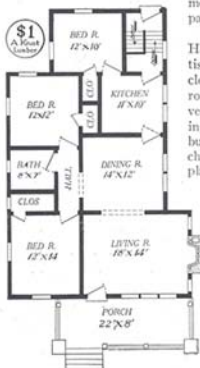
Price, \$1,350.00
Cash discount, 5%
Net price, \$1,282.50

HAVE you noticed that no matter from what angle you view an Aladdin house, it presents attractive lines and a pleasing appearance? The Vassar is certainly no exception to this rule. We wish you could walk around this attractive house to see how our designers have removed entirely the objectionable projections and unsightly additions so often found on the sides or at the rear of many houses.

Notice how all sides of this house are relieved of every monotonous appearance by the broken roof lines and the artistic selection and location of the different styles of windows. By including under the main roof of the house the back grade entrance to kitchen and cellar we have the most convenient, warm, and attractive arrangement of a very necessary, yet so often unsightly, part of every house.

Please study carefully the interior arrangements. How could they be more compact, convenient or artistic? Three large, well lighted bed rooms with large closets are nowhere evident from living or dining rooms, yet how could you have them any more conveniently located? For families requiring their sleeping rooms with ample closet room, this attractive bungalow is a great favorite. Brick for piers and chimney not included in price. Siding furnished in place of wall shingles, if desired, at no additional cost.

See Terms on page 2 and General Specifications on pages 12 and 13.



Floor Plan—The Vassar





The Georgia No. 1 \$797.05

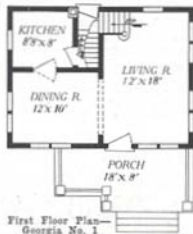
Price, \$839.00
Cash discount, 5%
Net price, \$797.05

ARE you interested in a six-room home with bath and all modern conveniences? If so, we would ask you to study carefully the architectural lines and interior arrangements of the Georgia No. 1. After you have done this we believe you will agree that in this modern bungalow our architect has combined in a remarkable degree the elements essential for beauty and convenience. The exposed rafters, heavy cornice brackets, casement windows, hooded brackets over upper windows, and bungalow front door all lend a charm which at once makes this house a favorite with home builders. Notice also how pleasantly the porch lines blend with the general exterior lines of construction. Often you see a porch added to a house so that one almost wonders if it were not an afterthought in designing. The porch lines of the Georgia certainly are far removed from any such criticism.

On entering the front door the large living room separated from the dining room by the cased archway gives a roominess of appearance to be had only by such an arrangement of floor plan. The conveniently located kitchen with inside door to grade entrance completes the first floor. From the rear of the large living room the semi-open stairs lead to a central hall on the second floor. Three well lighted bed rooms with bath and clothes closets are conveniently accessible from this hall.

This house is regularly furnished with knotless red cedar siding for the walls of the first story and cedar shingles for the second story. Either siding or shingles for the entire walls can be had if preferred. Also two sash, check rail windows will be substituted for casement windows where desired. No additional cost for either change. Examine Georgia No. 2 in colors on another page.

See Terms on page 2 and General Specifications on pages 12 and 13.



The Georgia living room is especially interesting by reason of the unusual window arrangement.





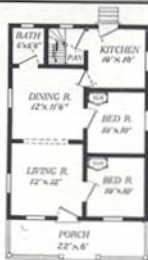
The Princeton—A Complete Cottage

A COSY, comfortable, convenient, warm home; that exactly describes this remarkable house. It is as good a building in every sense of the word for its size as money can buy, and when erected is worth \$1,200 to \$1,400. It is designed and built exactly like any good contractor would build it. Identically the same beautiful interior finish and knotless lumber goes into the construction of the Princeton as into our most expensive houses. It simply cannot be surpassed. This house can be put up and completed by two inexperienced men ready to be papered and painted in about one week. This is possible because every stick is cut the right size and ready to be nailed in place, and because our instructions and drawings are so complete that no fitting, figuring, or fussing is necessary. Every piece in the house is marked to correspond with the drawings. Study the floor plan and see how conveniently the house is laid out. Note the arch between living room and dining room, large porch, the cellar entrance, etc. A careful study of the arrangement of rooms will show convenience at every point. Price of Princeton No. 2, \$720.00. Cash discount, 5%. Net price, \$684.00.

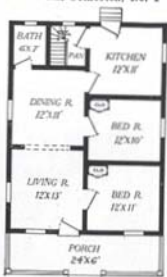
See Terms on page 2 and General Specifications on pages 12 and 13.

\$598.50

Price, No. 1, \$630.00
Cash discount, 5%
Net price, \$598.50



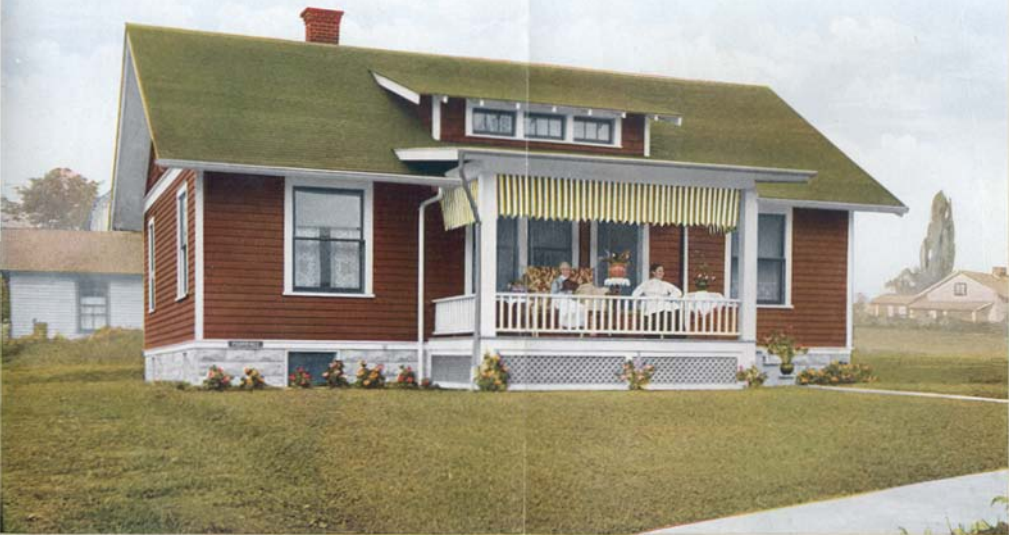
Floor Plan—
The Princeton, No. 1



Floor Plan—
The Princeton, No. 2



An Interesting Dining Room—The Princeton



Floor Plan—The Florence

The Florence \$787.55

Price, \$820.00
Cash discount, 5%
Net price, \$787.55

PRIDE of ownership! The very attitude of every member of the family in this picture denotes pleasure and satisfaction with their home: even to the extent of painting a small neat name, that all who pass may know. The Florence is quite extraordinary in the almost universal appeal it has on observers. It is as clean in outline as a Greek temple and surely as pleasant to look upon as any home could be. To the lover of simplicity the Florence has a strong attraction, its well balanced and commodious porch, finely proportioned roof and dormer window, wide front windows and shingled gables all being in perfect harmony. And the material from which the whole is moulded is all as perfect as can be taken out of the forest. The owner has no lingering memories of paint covered defects to spoil his pride of ownership. The siding, the trim, the shingles, and the porch work are entirely free from knots or other defects.

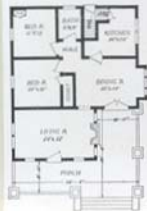
The interior will appeal to the housewife. It rather surprises you to learn that there are three fine bedrooms, giving a large family ample accommodations. Living room is centrally located, which is much desired by many families. The bathroom is well placed, while the kitchen is made more roomy by a light pantry. Well placed cellar stairs give access to the basement from the kitchen. Beautiful floors and woodwork distinguish all Aladdin houses and of course give the finished effect to the Florence as to all our other designs.

See Terms on page 2 and General Specifications on pages 12 and 13.



casement windows, exposed rafters and heavy cornice brackets lend their added charm.

In the interior arrangements just as great skill has been displayed to make the home modern and convenient as was given the exterior treatment to make it attractive and artistic. The large living room, which at first seems removed from the rest of the house, on closer inspection is seen to be conveniently connected with the dining room by means of an arch. To enter the house from the front one can either enter the living room, or, by means of



Floor Plan—The Ravenswood

ing room, or, by means of double French doors, enter the dining room without passing through the living room. Housewives, especially where children are in the home, appreciate this plan. Beautifully grained woodwork and floors make possible the finest of decorative plans. You have opportunity to confer with our Department of Service and to receive expert advice and assistance.

The Ravenswood \$1,151.40

Price, \$1,312.00
Cash discount, 5%
Net price, \$1,151.40



THE Homestead—to use a quaint old English term which is so full meaning—is more than a mere shelter, “a place of permanent family abode.” It is a part of ourselves, an expression of our personal tastes and convictions, a place where children may grow and learn and play, where men and women find work and rest and happiness, and where old age may come with understanding, comfort and peace. This is the ideal toward which every American is looking and toward which Aladdin is working. Most people have the ideal, but lack the experience and knowledge to work it out. This modest little home with its restful simplicity has filled the hearts of a great many families. Back of its

beauty and its convenience is the Aladdin Golden Rule Service which supplies to you the full knowledge and experience coming out of years of co-operation with many thousands of home-builders and their problems. Don't you think it most reasonable to believe that this service will be almost invaluable to YOU? It seems hardly necessary to add a mention of the interesting double windows with divided lights; the most unusual treatment of columns at the entrance or the many good things about the interior arrangement. These become more and more apparent as you study the plans deeply. And the “goodness” of all the materials making up the whole give the owner the final touch of satisfaction. If you will ask for full detail descriptions and specifications of the Carnation, they will be gladly sent to you. See General Specifications on pages 12 and 13. See Terms on page 2.

The Carnation \$787.55

Price, \$828.00
Cash discount, 5%
Net price, \$787.55



Lumber Interests Boost Prices

Shortly before January 1st, 1916, the lumber interests were busily engaged in boosting lumber prices. They had already raised them about \$5 per thousand feet, and at a time of the year when lumber prices are always the lowest. Further advances are promised by them. Aladdin customers escape the hold-up.

Floor Plan—The Carnation





The Castle \$470.25

Price, \$495.00
Cash discount, 5%
Net price, \$470.25



Here is a remarkably low priced home for its size and convenience.



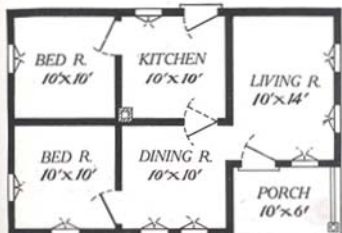
WHERE have you seen a home that was better adapted to a corner lot or a lot between streets than the Castle? Notice the living room and dining room. Both are located at the front of the house, and both are separated from the kitchen, with no inconvenience to the housewife. But now, notice the price. Have you ever heard of a like bargain? It is hard to realize that this home can be purchased at this low figure. Think of it, complete material at a price that would not ordinarily buy a three-room house at the local lumber dealers. In addition to your getting this home at one-half the usual cost, you get a better home.

The Aladdin Read-Cut System of Home Building is better than the old saw-measure-fit-on-the-ground system because it accomplishes the work *better, quicker, and cheaper*. Every piece of material in the house—siding, flooring, studding, joists, rafters, etc., is cut to fit in our mills by the finest machines. The result is accuracy of joints, and your house is stronger, warmer and tighter than if built by ordinary cut-to-fit methods. Waste in material cannot occur. Every inch of lumber you pay for is actually in and a part of your house. You know the lumber that's wasted costs just as much as the lumber that's used. The average house

built by the old way wastes 18 per cent of the lumber—\$18 out of every \$100 of your money is wasted—burned up for kindling wood.

Let us tell you more about this home. Write us today and we will send you complete detail descriptions and specifications.

See Terms on page 2 and General Specifications on pages 12 and 13.



Floor Plan—The Castle



The Cumberland \$1,097.25

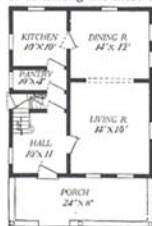
Price, \$1,155.00
Cash discount, 5%
Net price, \$1,097.25

THE CUMBERLAND is an extremely sensible type of home of trim, clean, architectural lines and most satisfying interior arrangement. The roof lines flare at the eaves, holding the height of the roof down, while the dormer window breaks the front. The porch rail is surely effective and harmonizes nicely with the house itself. The reception hall appeals to many home-builders. This hall leads to the living room, to the kitchen and upstairs and to the grade cellar entrance. Not the least of the good things about this house will be found the beautifully grained woodwork throughout. Of course this is all clear lumber, free from all defects and can be given any finish desired. Note the large living room, large pantry and the four good bed rooms. And the Cumberland is spoken of as among the most desirable of our square type of houses. See Terms on page 2



Living Room—The Cumberland

and General Specifications on pages 12 and 13.



First Floor Plan—
The Cumberland

"Last fall I purchased the 'Cumberland' and now that it is completed I want to thank you for your treatment in the purchase of same, as you saved me a great deal. Your Dollar-A-Knot guarantee is surely true to name and I have one of the prettiest places in southern Michigan. Have had more than a dozen chances to sell."—J. H. O'Neil.



Second Floor Plan—
The Cumberland

The Newton

\$665.00

Price, \$700.00
Cash discount, 5%
Net price, \$665.00



FOR lovers of large porches the Newton carries an especial appeal. Thirty-two feet expanse of veranda, with a twelve-foot depth at the ends offers expanse enough for anyone. Similar in design to the Eden, yet it has a somewhat larger living room. Every owner of the Newton writes of satisfaction with every feature. The semi-open stairway with circle tread and paneled newel post lends an excellent decorative feature to the living room. Three rooms on the first floor and two bed rooms and bath on the second afford accommodations for the average American family.

See Terms on page 2 and General Specifications on pages 12 and 13.



Second Floor Plan—
The Newton



First Floor Plan—The Newton

The Tucson

\$495.90

(Addition not included)

Price, \$522.00
Cash discount, 5%
Net price, \$495.90



WHEN it comes to much in a small space the Tucson certainly leads. Five convenient, well lighted, attractive rooms, with good sized front porch make up this snug and cozy little home. Sash front door, semi-open stairs and wide arch between living room and dining room add materially to the attractiveness of the Tucson. Where the exterior is painted either a French gray or seal brown and trimmed with white or cream, and the beautifully grained interior fir trim is either finished with oil or stain and then varnished, the Tucson presents a fresh, attractive appearance that invariably brings pleasure and satisfaction to its owner. (Rear addition shown in photograph not included. See page 94.)

See Terms on page 2 and General Specifications on pages 12 and 13.



First Floor Plan—
The Tucson



Second Floor Plan—
The Tucson



The Sheffield \$1,482.00

Price, \$1,560.00
Cash discount, 5%
Net price, \$1,482.00

DO not the roof and porch lines of the Sheffield please you? The heavy overhang and Japanese roof effect give an individuality to this attractive home that invariably pleases its owner. Notice the heavy porch columns and exposed scrolled rafters. How well these carry out the general architectural lines.

Ascending to the porch by the wide front steps, one is surprised with the size of the porch, 26x8 feet. An attractive front and a French door lead into and through the vestibule to the living room. Notice the size, 26x16 feet, and the wide archway leading to the well lighted dining room. Arch A-1, page 90, is furnished for this archway. A kitchen with pantry and stairs leading to basement and grade entrance complete the first floor. From the living room our easily ascending semi-open stairs lead to a central hall on second floor. Opening off the hallway are three bed rooms and a bath. Notice how each sleeping room has a large well lighted clothes closet in connection.

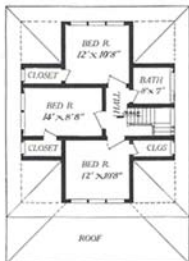
While this picture of the Sheffield shows the side walls with the double shingled effect, yet when desired siding without extra cost will be substituted for shingles.

The Sheffield, like all Aladdin houses, has furnished regularly for interior trim, doors and windows that beautifully grained, clear and knotless Oregon Fir. When this woodwork is either oiled or stained and then varnished, the grain of the wood stands out very prominently. Often when Aladdin home builders want to have a variety, the finish in the bed rooms and bath is painted white, and the doors stained a mahogany. This removes any sameness and gives a very beautiful and pleasing effect.

Remember our price includes paint, hardware and everything to complete this house above the foundation except the brick for the chimney.

For a substantial, convenient, attractive home, don't you think the Sheffield is one of the best?

See Terms on page 2 and General Specifications on pages 12 and 13.



First Floor Plan—The Sheffield Second Floor Plan—The Sheffield

AN interesting development of shingles! The Forsyth is extremely simple in outline, but this absence of embellishment makes possible so much house for so small a price. To fully appreciate the Forsyth you must take its exterior attractions into consideration with the large amount of floor space and interior advantages. The cosy sheltered porch is essentially delightful to its owners. A beautifully finished front door is bordered by two narrow windows giving excellent light to the entrance hall. Large windows balance the front of the house and make both the living room and the dining room cheery. The location of the two bed rooms, bath and kitchen have been carefully studied for convenience. The picture of the particular Forsyth which we show here has two chimneys, one at each end; that in the living room for an open fireplace and that on the opposite end for furnace or kitchen stove. Of course you appreciate that on a small catalog page it is impossible to fully illustrate or describe



Floor Plan—The Forsyth

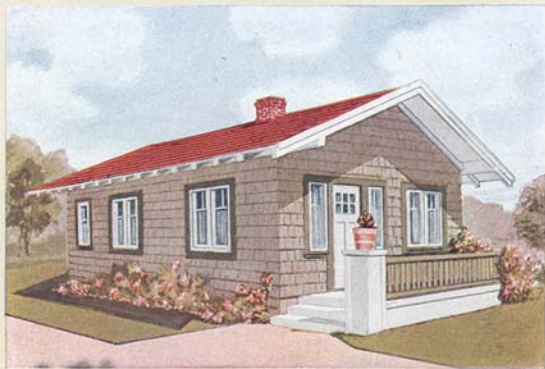
the Forsyth, but upon request we send you a more complete description together with detailed specifications and give you ALL the facts you will want to know about it. Refer to colored pictures in rear of this book for an understanding of the beautiful interior finish and hardware fittings. They cannot be surpassed regardless of price.

This is the eleventh year of steady growth of the Aladdin Read-Cut System of Construction! It has been approved by the United States Government and by the Michigan State Government in houses furnished them; it has received the Highest Award by the Panama-Pacific International Exposition and by the Michigan State Agricultural Society, and has the enthusiastic endorsement and approval of thousands of everyday American citizens in every state in the Union. See Terms on page 2 and General Specifications on pages 12 and 13. Complete detail specifications sent on request.

The Forsyth

\$595.65

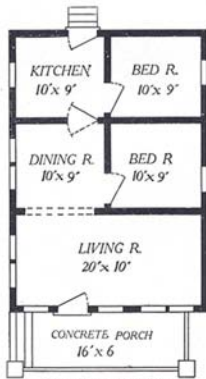
Price, \$627.00
Cash discount, 5%
Net price, \$595.65



The Leota \$416.10

Price, \$438.00
Cash discount, 5%
Net price, \$416.10

CRAFTSMAN" front door, casement windows grouped in pairs and side walls shingled are the particular ideas moulded into the Leota. Another new thought is the side entrance to the porch. The porch posts should be very heavy and built of concrete as well as the porch floor. The interior arrangement is well illustrated by the floor plans shown below. This little gem of a bungalow will match, in both material and construction, homes of many times its cost. Beautifully grained interior wood work, frosted brass hardware fittings and the finest stains and varnishes to be bought combine to give you a most interesting bungalow. Note the casement windows with divided lights and exposed rafter ends. When erected this bungalow is worth very nearly two thousand dollars, without the lot. You'll like every feature of it. The Leota is built of the same materials and in identically the same way as the Aladdin house which was erected at the Panama-Pacific International Exposition, and which was awarded the highest prize by the International Jury of Awards. It is built of the same material and in identically the same way as the homes of the President and the other officers of the North American Construction Company. The same beautiful, clear and flawless lumber, high priced paints, stains, varnishes and hardware are furnished as in all Aladdin houses. While no cellar is shown under the Leota from which this picture is taken, you can of course have a full cellar, as in any other home. See General Specifications on pages 12 and 13. Detail specifications for the Leota will be sent on request. See Terms on page 2.



Send for Complete Specifications

Remember that you have only to drop us a line telling us which Aladdin house you would like to select, when we will send you complete detail specifications covering all the facts you want to know about it.



The Yale \$845.50

Price, \$890.00
Cash discount, 5%
Net price, \$845.50

THE full realization of a complete home is accomplished in the Yale. The judgment of Aladdin designers has been wonderfully approved in the hundreds of sales of this design. When you fully comprehend all that it offers, for less than nine hundred dollars, you will be as enthusiastic about it as every customer who is living in it.

Harmony of design and proportion first strikes the eye. With a width of twenty feet, making it adaptable to narrow lots, it accomplished a two-story plan without its height being apparent. Four gables afford a surprising amount of room in the second story. Concrete pedestals support square porch columns and the long balusters of the porch railing are different from the usual type. A beautiful front door leads into the

living room which extends full width of the house. Arched opening separates living room from dining room. Kitchen, pantry, cellar way and rear porch complete the first story. On the second story are found three bed rooms, bath and closet. You will be delighted by the selection of the Yale, and especially the surpassing beauty of the interior wood work which lends itself to the most interesting decorative schemes. Our Johnson's Wood Stains, and varnish permit your taste to be realized to the fullest extent. See General Specifications on pages 12 and 13. Complete detail specifications for the Yale will be sent on request. See Terms on page 2.





The Standard \$1,092.50

Price, \$1,150.00
Cash discount, 5%
Net price, \$1,092.50

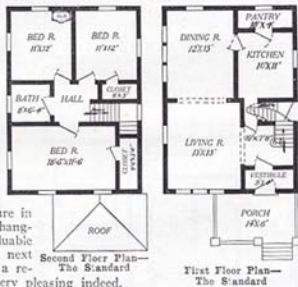
YOU will agree with Aladdin customers and owners of the Standard in their claim that "it is the best square type house ever offered to home builders." Greatest in amount of space, best in point of design, most convenient in arrangement, and all this at a price that is much lower than it would cost you if you were able to buy it thru any other source. Notice the architectural detail under the eaves, porch, and the dormer.

Close inspection of the illustration gives many pleasant surprises. The scrolled brackets which are especially machined for the Standard, add a finished touch to the sweeping eaves. Possibly you have noticed that this has been carried out on all eaves—dormer and porch included. The broad belt is also used to advantage here.

The inside arrangement has appealed to many. Notice the vestibule entrance. This is a very useful feature in that it provides an excellent place for hanging wraps. Besides this, it is a valuable feature in cold weather. Thru the next door we enter what might be called a reception hall and the impression is very pleasing indeed. The handsome exposed staircase can be beautifully stained

and varnished and gives one an idea of the rich effect on the interior. You find that the living room and dining room are extra large—and that will suit you—roomy and especially well lighted. The second floor has model sleeping rooms and the arrangement with bath at the head of the hallway is perfect. You will be greatly pleased with your new home—The Standard.

See General Specifications, pages 12 and 13. Complete detail specifications for the Standard will be sent on request. See Terms on page 2.





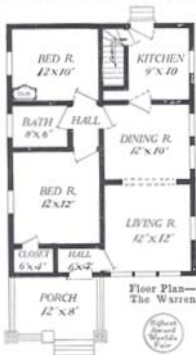
The Warren \$757.15

Price, \$797.00
Cash discount, 5%
Net price, \$757.15

STUDY the floor plan of the Warren and see if you can find an inch of waste space. It is the most practical of homes. There is much in the Warren that you cannot see at first glance. For instance, notice the short hallway inside the front door—just a dandy little place to hang the wraps of evening callers. The clothes closet built next to the hallway and opening into the bed room is just ideal. Off the front hallway is the living room, and that it is well lighted by three windows at the front is noticed the moment you enter, and the wide arch dividing the living room from the dining room really makes them one big room. Through a door in the dining room you enter a hallway. It leads directly to the front bed room, bath room and back bed room, separates living rooms from sleeping rooms so that neither one is disturbed by the other. The wood work and floors can be finished any way you like for our beautiful Oregon Fir is unsurpassed by any kind of interior finish.

Both front and back bed room are compact and both have clothes closets. Now visit the home workshop—the kitchen. One can reach the dining room, basement or outdoors very easily. Now, have you found any waste space, or could you improve upon it in any way? The Warren has a great many friends. Will you be another?

"I saved four hundred and seventy-five dollars on my 'Warren,'" wrote an owner recently, "and to say that I am delighted with it is putting it mildly. My carpenter said the material was finer than we could get here at any price, and everything went together fine."

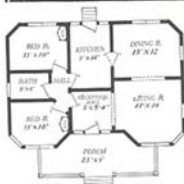


Send for detail specifications and additional information when you have found the house you like. It is of course not possible to tell all about any house in space available in this catalog.

See Terms on page 2 and General Specifications on pages 12 and 13.

The Carmen \$899.65

Price, \$947.00
Cash discount, 5%
Net price, \$899.65



Floor Plan—The Carmen

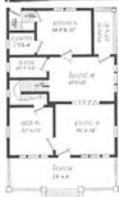
Entering the living room from the reception hall, the two wide arches give a sense of roominess to be had only by such an arrangement as you find in the Carmen. Notice how easily accessible are the bath and sleeping quarters, yet how secluded they are from the living apartments. Like all Aladdins,—the dining room is reached with the least possible steps from the housewife's laboratory—the kitchen.

See Terms on page 2 and General Specifications on pages 12 and 13.



The Albany \$1,596.00

Price, \$1,680.00
Cash discount, 5%
Net price, \$1,596.00



First Floor Plan—
The Albany



Second Floor Plan—
The Albany

"WE hope you will be as well pleased with the picture as we are with our new home," writes an owner of the Carmen. Where would you look to find a cozier, better arranged or more attractive six-room bungalow? A bay window on either side of the large, wide porch, and the diagonal corners, with scroll cornice supports give an individuality to the Carmen.

Entering the living room from the reception hall, the two wide arches give a sense of roominess to be had only by such an arrangement as you find in the Carmen. Notice how easily accessible are the bath and sleeping quarters, yet how secluded they are from the living apartments. Like all Aladdins,—the dining room is reached with the least possible steps from the housewife's laboratory—the kitchen.

IF you are looking for a square type bungalow pattern we believe the Albany will interest you. It has several unique features: spindle porch rail, slight graceful curve to roof, and dormer roofs in exact accord with main roof lines. The porch leading from dining room admits very easily of being screened. On the first floor is one sleeping room, desired by so many, also bath. Large living room, dining room and well lighted kitchen complete the first floor. On the second floor are three pleasant bed rooms, each of which has a large clothes closet. Side walls will be finished if desired with siding at no extra charge.

See Terms on page 2 and General Specifications on pages 12 and 13.

See Terms on page 2 and General Specifications on pages 12 and 13.

The Wilmont

\$989.90 Price, \$1,042.00
Cash discount, 5%
Net price, \$989.00

A CLOSE study of detail as illustrated in the photograph of the Wilmont brings to your notice several individualities peculiar to it alone. First comes the porch which is offset from the house for a distinct reason. Summer's breezes will always find some portion of the porch exposed and the summer sun will always find some portion protected. Further it broadens the apparent size of the house and breaks away from straight lines. Handsome, square, tapered columns support a gable roof of generous proportions. Two broad belts divide the front of the house laterally and the shingles are doubled every second course. Square brackets support a wide projecting eave. The floor plan speaks eloquently for itself. Owners of the Wilmont are proud of their homes. Many beautiful color plans for the exterior are possible from the thirty-two colors in Aladdin's paints.

See Terms on page 2 and General Specifications on pages 12 and 13.

The Romeo

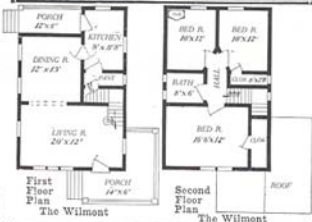
\$1,189.40

Price, \$1,252.00
Cash discount, 5%
Net price, \$1,189.40

WHAT keen enjoyment there is in planning to make "home" livable, likable and comfortable. It's the nearest and dearest sentiment in our lives. It has been said that the outside of the house shows the man's character, and the inside the wife's. Aladdin architects help you to a full realization of the expression of your ideas in style, design and arrangement. Aladdin Department of Service broadens your knowledge of artistic decoration, carries your expressed tastes to a full development and attains harmony of color and design in finishings, painting, staining, papering, tinting, landscape gardening and planting. And this service of experts is completely at your command without cost when you have selected your Aladdin house or bungalow.

The Romeo is an admirable home. In this design the idea has reached the highest point of artistic development. Clean lines distinguish this cozy home. The interior plan appeals at once to the observing, especially in the large amount of light which floods all rooms. In the living room, light is admitted from three sides. This home will do credit to its owner in any surroundings.

See Terms on page 2 and General Specifications on pages 12 and 13.





The Wilson \$587.10

Price, \$618.00
Cash discount, 5%
Net price, \$587.10

THINK of it—over *one thousand* ALADDIN Houses are *carried in stock* at our Bay City Mills, ready for instant shipment. Your order is received and loaded immediately. Our mills are located in Michigan, Florida, Louisiana and Oregon. Shipment is made from the nearest mill. No matter where you live, your house comes in a straight line from forest to you. Long distance and excessive freight rates are cut out. No hold-up on the way. In a short time after shipment is received, you move into your own home—The Wilson. *You can build your own ALADDIN.* Complete instructions and illustrations are furnished with every ALADDIN House. All you do is follow the working plans and drive the nails. It means a saving of over one-third of the usual cost.

Look over the floor plan carefully. Notice the daylight rooms—at the front of the home. Sleeping rooms to the rear. When you decide on owning the Wilson, you have made a \$500 saving. Note the clothes closet at the entrance vestibule. Living room is 12x14 feet and the dining room 12x12 feet. Clean, tapering porch columns support a porch roof of excellent design. The general proportions of the

Wilson are splendid. And the interior woodwork and floors are all of beautifully grained knotless Fir. Of course you receive everything to complete your home in one shipment. No expensive and annoying delays waiting for windows, doors, nails or the many items necessary in the building and finishing of a house. ALADDIN removes all these difficulties.

See Terms on page 2 and General Specifications on pages 12 and 13.



Floor Plan—The Wilson



Aladdin enables you to evade the rapidly advancing prices of the lumber interests.



The Burbank \$798.95

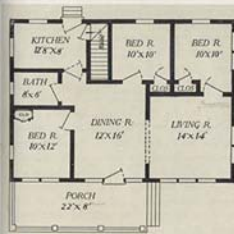
Price, \$841.00
Cash discount, 5%
Net price, \$798.95

THIS picture tells a better story of Aladdin Golden Rule Service than anything that could be put into words. Our good friend stands on the porch, proud of the result of his industry, appreciative of the individuality and distinction of his home and enthusiastic in his praise of Aladdin materials and service.

In his choice of an Aladdin home, the extreme simplicity of outline of the Burbank appealed to him strongly and he saw the possibilities of shingled walls in a velvety brown, a soft green roof and an edging of pure white about the windows and eaves. The partial inclusion of the commodious porch with trailing vines took his fancy. But he is especially enthusiastic over the convenience of the rooms. Three fine bed rooms, a dining room of unusual proportions and an excellent living room, having grouped windows afford ample accommodations for a large family. The kitchen is lighted by two windows, has cellar stairs and outside entrance.

Beautifully finished woodwork and floors of the purest lumber complete a home to the last degree of satisfaction, and should you select the Burbank, or in fact any other Aladdin home, you can most certainly be assured of a result as splendid as is illustrated on this page. In further proof of this we will be glad to furnish you with the names of many Aladdin home owners who will vouch for their satisfaction, who will tell you of the money that they have saved and will even urge you to join the big Aladdin family.

General Specifications of the Burbank will be found on pages 12 and 13. Detailed specifications will be sent you upon request. See Terms on page 2.



Floor Plan—The Burbank

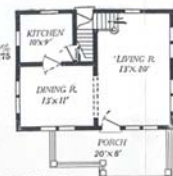
Georgia No. 2 \$897.75

THE Georgia presents a most unusual combination of true bungalow and two-story house. Excellent judgment by the designers gives it character and distinction. Observe the manner in which the exterior walls are divided by a belt, apparently cutting down the height, while the lower story is sided and the upper shingled. Timber brackets balance the overhanging roof, which is splendidly proportioned. The porch is unusual in shape and type, the longitudinal section being covered by a roof that partakes of the form and pitch of the main roof, but is relieved by the jutting gable covering that section of the porch floor projecting away from the front door. Square tapering columns supported by pedestals and joined by a well designed railing complete the porch.

Note the paired casement windows which afford excellent light to the interior. The upper gable windows are given an interesting touch by the little bracket supported hoods. Living room, dining room, kitchen, grade cellar entrance, three bed rooms, bath and closets constitute a complete housekeeping establishment. And everything about this home gives a feeling of quality and refinement. One purchaser alone erected ten Georgias in 1915, an unusual tribute to its popularity.

See General Specifications on pages 12 and 13. Detail specifications for the Georgia will be sent on request. See Terms on page 2.

Price, \$948.00
Cash discount, 5%
Net price, \$897.75



First Floor Plan—
The Georgia No. 2



Second Floor Plan—
The Georgia No. 2



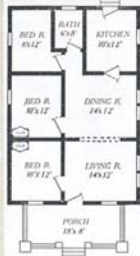
The Stanhope \$638.40

Price, \$672.00
Cash discount, 5%
Net price, \$638.40

ARE you not pleased with the Stanhope? Can you conceive how with straight architectural lines any more pleasing or substantial style of construction could have been worked out? Notice what a strong yet artistic appearance is given the entire front by the heavy porch pedestals, square porch columns and porch rail.

How in keeping are the small lights in bungalow door and the upper divided lights in all windows. And when it comes to interior plan, it would be very difficult to work out a more convenient arrangement. The wide arch between living and dining rooms gives an appearance of one large room 14x24.

The double action door leading to a kitchen large enough, yet none too large, completes the living part of this compact, cosy home. Three well lighted, suitable sized bed rooms, equipped with a modern closet, give as much sleeping room as is frequently found in a much larger home. In placing the bath at the end of the short hall it is sufficiently secluded, yet conveniently located. For any one desiring a six-room modern house all on one floor, the Stanhope is a great favorite. Study General Specifications on pages 12 and 13. Complete detail specifications will be sent you upon request. See Terms on page 2.



Floor Plan—The Stanhope



The Strathmore \$1,197.00

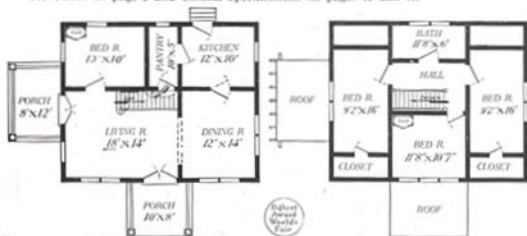
Price, \$1,260.00
Cash discount, 5%
Net price, \$1,197.00

THE Strathmore is different in design—it is a home of individual tastes. By noticing the photograph you will find that the special details are arranged in groups—double doors in front entrance, double windows balanced on each side, triple windows in dormer above. The double door feature owes its origin to architecture that was real popular in Colonial days. Today it is again coming into general favor in the largest and highest class homes on account of the pleasing effect it gives to both the interior and exterior of the home. The pergola porch at one side is another feature that pleases the average home-builder with modern ideas.

The interior arrangement will please you—notice the floor plan. The large living room is graced with a beautiful staircase. From the living room thru wide arch you enter the dining room with kitchen to the rear. One bed room down-stairs with three more and bath on the second floor make just an ideal home.

This design gives plenty of opportunity for home-loving folks to express personality and character in the decorations. This one pictured here was painted in white and trimmed in green. Excellent effects could be had by painting the house a lead gray or a yellow with white trim, or house painted in brown and trimmed with white. The living room—the one room that belongs to the entire family—could be papered or frescoed in deep brown with white ceiling. Space alongside of stairway would make a handsome setting for a davenport, wide seat or a piano. Of course, everyone has ideas for the decoration of their new home, and to help them, the Aladdin Department of Service will gladly send many more—and this free of charge. Let us help you plan this ideal home—the Strathmore—for your home.

See Terms on page 2 and General Specifications on pages 12 and 13.



First Floor Plan—The Strathmore

Second Floor Plan—The Strathmore



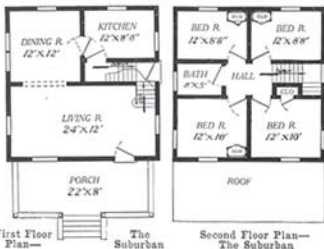
The Suburban \$999.40

Price, \$1,052.00
Cash discount, 5%
Net price, \$999.40

THE Suburban is well named, because how attractively this modern home will adorn the most desirable lot in the residential part of any of our progressive cities! Simple in construction, yet it is thoroughly modern in every line. Exposed scrolled rafters, cornice brackets, divided lights in the upper sash, attractive front door, combined with a suitable grouping of different style and sized windows furnish the distinguishing features in exterior design. The shingled gable tends to remove the plain appearance so often found in this style of house. The large living room, 24x12 feet, with semi-open stairs and grouped windows, a well lighted dining room separated from living room with wide archway; and convenient kitchen reached from dining room by a double action door make up the living apartments of the Suburban. Ascending the semi-open stairs, one reaches a central hall on second floor. No space has been wasted by our architect here as can be easily seen by noting the convenient bath and four large sized sleeping rooms, each one of which has a large clothes closet in connection. And please note that the lowest points in the bed rooms on the second floor of the Suburban are six feet in height.

Remember our price includes everything above the foundation to complete this modern home except the brick for the chimney. Brick costs about the same in every section of the country, hence we cannot save you any money on the brick. We can save every builder of a Suburban several hundred dollars on the material we prepare and furnish.

See Terms on page 2 and General Specifications on pages 12 and 13.





The Ridgway

\$874.00

Price, \$920.00
Cash discount, 5%
Net price, \$874.00



Floor Plan—
The Ridgway

IN the Ridgway you find all those artistic, modern touches in architectural designing that go to make the "up-to-date" bungalow. Notice how the divided glass in the front door is in keeping with the divided upper sash throughout the house. The wide, overhanging eaves and cornice, combined with the heavy cornice brackets and exposed rafters, all combine to give the Ridgway an appearance of strength and stability seldom found in a house of this size.

Five rooms and bath make up the interior. A large living room occupies a prominent place at the front. Opening off from this at the right is one of the sleeping rooms, while the wide open arch at the rear gives easy access to the dining room. The doors leading to bath and kitchen are sufficiently screened from view from dining room, yet how easily accessible. The Ridgway has opening off the kitchen a combined grade and basement entrance. Our price includes stairs leading to basement. Either shingles or siding as desired will be furnished for the side walls.

See Terms on page 2 and General Specifications on pages 12 and 13.



The Elkridge

\$659.30

Price, \$694.00
Cash discount, 5%
Net price, \$659.30

WHETHER your lot is wide or narrow the Elkridge will be equally suitable. In the exterior designing, the architect has retained all those little, modern touches that add so much to the bungalow type of architecture. Exposed rafters, open cornice, upper sash divided.

lights, varying sized windows, bungalow door, inset porch, form the distinguishing features in exterior treatment. When side walls are covered with our clear knotless Red Cedar siding, painted either seal brown or French gray and trimmed with white, the Elkridge is certain to challenge the attention of the artistic.

The architect, in interior arrangement has followed one of our most popular plans. Living and dining rooms separated by wide arch, kitchen conveniently located at the rear, two sleeping rooms and bath secluded at left, yet easily accessible.

The Elkridge is one of our very latest designs, but it has met with immediate favor and approval. Shingles, when desired, can be substituted for siding at no additional cost.

See Terms on page 2 and General Specifications on pages 12 and 13.

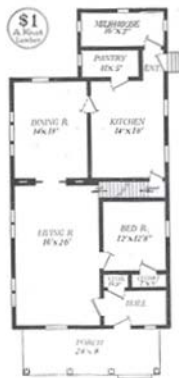


Floor Plan—
The Elkridge



The Englewood \$1,694.80

Price, \$1,784.00
Cash discount, 5%
Net price, \$1,694.80



First Floor—The Englewood

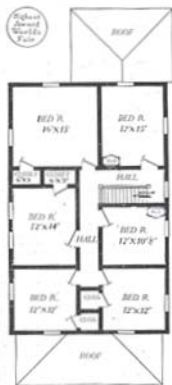
HERE is a farm house for the busy farmer. It has exactly the features necessary for farm efficiency. Plenty of shelter for extra hands in busy seasons. Convenient in its arrangement and built for strength and durability, this design is one that you should consider seriously. Of the Aladdin Houses designed for farm purposes, the Englewood is one of the largest with very attractive features. First, notice the floor plans or room arrangement for first and second floors.

The busy parts of the house are roomy, light and easily reached when needed. The large kitchen, which the housewife appreciates, is connected with either milkhouse, pantry or basement stairs, any one of which is but a few steps away.

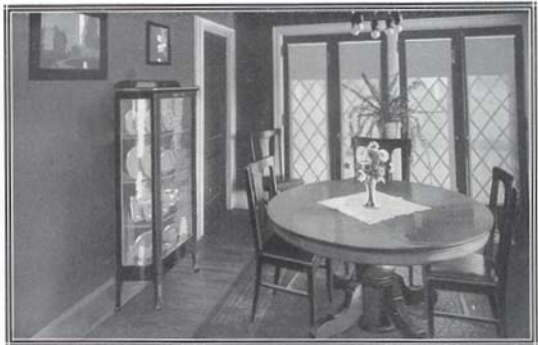
Next in importance, are the sleeping rooms, which are separated from the rest of the house. One bed room on first floor with six bed rooms on second floor—each extra large and well lighted. In the two back bedrooms on the second floor it is possible to place two double beds. This feature is valuable on the large farm and no doubt appeals to you.

Notice the size of dining room. It will permit a dining table twelve feet long that will seat sixteen people at one time. And the living room—the gathering place for the few leisure hours on the farm—is easily shut off from the rest of the house by closing the sliding doors in the archway. This Aladdin pleases its owners and they are always loud in their praise of its many features. Write today and let us tell you more about this model farm home—THE ENGLEWOOD.

See Terms on page 2 and General Specifications on pages 12 and 13.



Second Floor—The Englewood



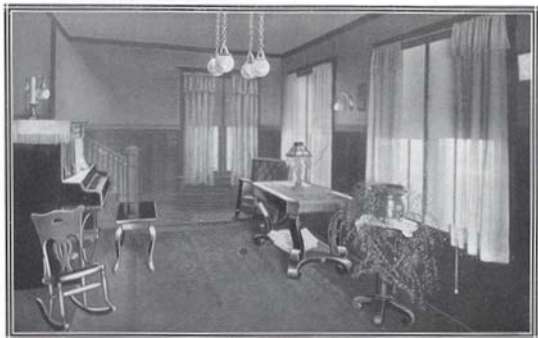
Dining Room—The Brentwood. French Doors Lead to Porte Cochere



Bed Room—The Massachusetts



Dining Room—A Hopeton Special



Living Room—The Georgia No. 2



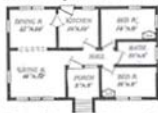
The Auburndale — \$749.55

Price, \$780.00
Cash discount, 5%
Net price, \$749.55

WHY should you pay one thousand dollars for a home that you can buy for \$700? Why should you let the contractor add his \$300 profit to your bill? This is plain talk—and meant to be. Middlemen are necessary only when manufacturers won't deal with consumers. You are the consumer—the home builder. We manufacture and produce the goods. We will not sell to middlemen. If we did, you would have to pay 30 cents more on every dollar's worth of our goods. Labor and profit are the biggest parts of the price you pay for any article. That's all the middleman adds to the goods—labor and profit. And you foot the bill.

That is why you can buy the Auburndale at \$749.55. Think of this handsome home on your lot! Could you imagine a better plan? Look at it again. Notice living room and dining room. These two rooms have a world of light—seven windows. The kitchen opposite dining room is but a step across the hall to the front door. The two bed rooms with bath in connection make this plan the greatest, the most popular and practical of the present day six-room bungalows. Let us tell you more about this home.

See Terms on page 2 and General Specifications on pages 12 and 13.



Floor Plan—The Auburndale



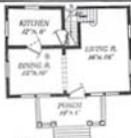
The Washington

\$775.20

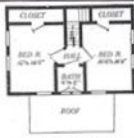
Price, \$816.00
Cash discount, 5%
Net price, \$775.20

THIS is a Dutch Colonial type and one of the most truly artistic Aladdin Homes. Owners are loud in their praise of this home. The sloping hip roof extends to partly form porch of pergola style with two solid round columns to support it. Living room occupies full depth on one side, balanced by dining room and kitchen opposite. Large double windows in front. Second floor arrangement: two large bed rooms, hall, and bath room. The Washington, an original Aladdin design, is a home with many friends.

See Terms on page 2 and General Specifications on pages 12 and 13.



First Floor Plan—
The Washington



Second Floor Plan—
The Washington

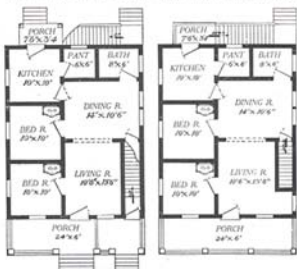


The Duplex Two Apartment \$1,197.00 Price, \$1,200.00
Cash discount, 5%
Net price, \$1,197.00

THE Aladdin two-family house. The Duplex is produced as the result of a large demand we have had for a double house. The double house has some very attractive features. It enables its owner to live in one part and secure a good rental from the other—and his return is constantly much greater than if he had built two separate houses. Besides this, the double or two-apartment house is a necessity where ground space is costly and homes scarce. The Duplex design has none of the disagreeable features so common in two-apartment homes. Both first and second floors are complete homes in themselves with separate front and rear entrances. The floor plan gives one an idea of the convenience and comfort to be had for both occupants of the Duplex. Both floors contain living room, dining room, kitchen, two bed rooms, bath, pantry, front and rear porches. One Aladdin customer who has erected three Duplex apartment houses says the completed cost of each of his Aladdin buildings showed a net saving of \$560 each.

Double Houses

We show but one low priced Two - Apartment Aladdin in this catalog. However we have other sizes and types which will be sent upon request. Or if there is a particular style of Duplex house that is popular in your locality, we will be glad to figure from your plans.



First Floor Plan—
The Duplex

Second Floor Plan—
The Duplex



Aladdin Breakfast Rooms



ONE of the quaintest and surely one of the most sensible ideas coming from the California bungalow architecture is the little breakfast room found attached to the kitchens. It has many uses—every one of assistance to the housewife. Saves setting the dining room table in the morning. is helpful to the home worker in many operations about the kitchen, and is cosy and homey in every way.

It affords an opportunity for a quiet morning's repast without interruption or any great amount of work, as the kitchen is so near yet breakfast room is secluded. No trouble will be experienced in attaching to your home or kitchen, as all material needed to complete the breakfast room addition, together with complete instructions, are furnished at the price quoted.

We have included a sketch of kitchen with breakfast room attached. This will give you a more comprehensive idea of the general arrangement. Material includes projection of three feet from house, tables, seats, and, of course, all lumber, hardware, plaster board, paints, etc.

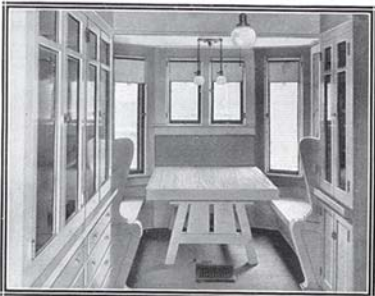
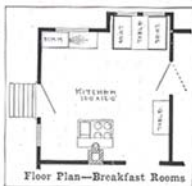
Two styles are here shown, the Sunshine and the Morning Star, drawn on mission lines.

THE SUNSHINE
Size, 8x4 ft. Net
Price, \$108.

THE MORNING STAR
Size, 8x4 ft. Net
Price, \$118.



The Sunshine



The Morning Star



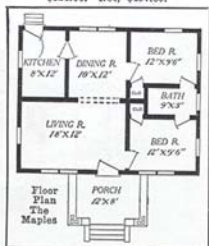
An Autumn Day with The Maples

THE MAPLES is of the more conservative type of bungalow. At first glance, you will notice that simple lines are here made into a practical, substantial home. It has found great favor among Aladdin customers. The low roof, wide eaves, odd windows, exposed rafter ends and altogether attractive simplicity make a very pretty exterior without going to extremes in decoration. Much credit for the convenient arrangement of the interior is due to the fact that the house is square. Notice the manner in which the sleeping rooms occupying one side of the house are separated from the living rooms. The spacious living room at the front has an abundance of light and comfort with outside entrance, entrance to front sleeping room and wide entrance to the dining room. Dining room is easily reached from back bed room, living room and kitchen, and is well lighted on all sides. The kitchen is placed opposite dining room with outside entrance to the rear. Owners of the Maples claim for it the most convenient and comfortable arrangement. Ask us for names of Maples owners near you and let them tell you in their own words. See General Specifications, pages 12 and 13. Detail specifications for the Maples will be sent you on request. See Terms on page 2.

- No. 1. Price, \$735. Cash discount, 5%.
 Net price, \$698.25
 No. 2. See Gretna floor plan. Price,
 \$524.00. Net, \$497.80.



A Dainty Dining Room



THIS magnificent bungalow secures inspiration from one of the best known bungalows in Pasadena, California. An interesting effect is secured by the treatment of gables composing the roof. This is highly typical of the true California bungalow. To the lover of large porches the Plaza has an especially strong appeal. The front section of porch extends twenty-six feet from the entrance to the left, and thirty-one feet from the front along the side. Over the rear section of the side porch a timbered pergola gives opportunity for vines. Entering the front door you have a view through the living room and dining room for thirty feet. Just off the dining room, and with direct entrance to the kitchen, is a dainty breakfast room. This room can, of course, be used as a den or sewing room, at the owner's discretion. Grade cellar entrance from the kitchen, three fine bed rooms, bath and closets complete this splendid floor plan arrangement.

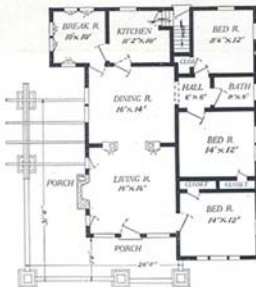
A true craftsman front door, and our famous Arch A-1 illustrated in back of catalog are included in the price. This arch may be used as bookcases, facing the living room, or china closets facing the dining room. Owners of the Plaza are delighted with it, as you cannot fail to be should you select it. It will save you from \$400 to \$900 under what could be built by the old way of building, with inferior materials. Send for complete detail specifications. See General Specifications, pages 12 and 13.

The color schemes illustrated by the pictures in this catalog are from suggestions of our experts in our Department of Service. If any one of these color schemes pleases you especially we can follow it for the house of your choice if you will so instruct us in placing your order.

The Plaza

\$1,499.10

Price, \$1,578.00
Cash discount, 5%
Net price, \$1,499.10



Floor Plan—The Plaza





The Winthrop \$996.55

Price, \$1,049.00
Cash discount, 5%
Net price, \$996.55

CAN you imagine this bungalow nestling among trees and shrubbery on your own lot? A few cobblestones are gathered from nearby fields and when blended with brown stained shingles, natural shrubbery and a setting of velvety green the observer is fascinated.

A bungalow should always be set close to the ground. When local conditions seem to make this impossible, the same result can be secured by terracing close to the building.

The Winthrop is of the pure bungalow type—low, a touch of rough stones, bracketed eave supports, heavy timber work, shingles, and broken outlines.

And as the real bungalow is always compactly and conveniently arranged inside—you will agree that the Winthrop is typical. The large living room is lighted by three group windows and the fireplace at the end forms an inviting nook. Extra length is secured to the dining room by the interesting bay window. Lots of wall space is available in the front bed room. The centralized hall, and entrance from dining room, kitchen, bath and bed room is a good feature. Could a bath room be better located than this? Rear porch with space for refrigerator, and grade cellar entrance. Can you help falling in love with this interesting bungalow?

See General Specifications on pages 12 and 13. Detail specifications for the Winthrop will be sent on request. See Terms on page 2. Masonry not included.



Floor Plan—The Winthrop



ALADDIN INTERIORS



DINING ROOM, 1000 THE BRIGHTON



HALL, 1000 THE BRIGHTON

The interior of the home is of no less importance than the exterior, from an architectural and artistic point of view. It has been said that the outside of the house shows the man's character, the inside, the wife's. Aladdin designers have spared no effort to bring the interior to a high plane and permit almost limitless expression of character and taste by the owner.

Every facility known to modern design, decoration and finish is at your command. Our designs, materials and our skilled workmen are equal to any demand made upon them. Built-in furniture, paneled walls, columned arches, buffets, bookcases (some of which are illustrated in this book) and in fact everything that is found in the modern home can be had of us. A close study of the pictures on this page is well worth your while.

The interior illustration of the Brighton shown at the right is reversed.



LIVING ROOM, 1000 THE BRIGHTON



ALADDIN Built-in Fixtures and Modern Home Conveniences



Aladdin Closette

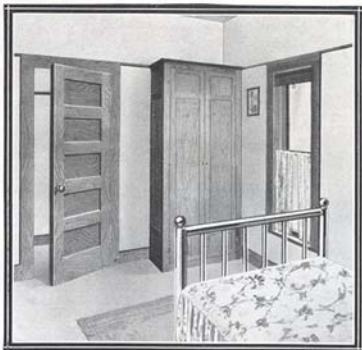
MODERN ideas in relation to closets are rapidly changing and while the housewife has always spoken of the need of good closet room, a little reflection will disclose the surprising fact that most closets devote nearly three-quarters of the space to doors, elbow room and ability to walk into them, and one-quarter of the space to actual storage and hanging space.

Isn't that exactly true?

Aladdin discovered this fact in his continuous hunt for economy and waste-saving. Now then, here is a practical plan that utilizes just $4\frac{1}{2}$ square feet

of floor space and yet gives more hanging space and storage space than the usual four by six foot closet that occupies 24 square feet of floor space! Think of it!

And how much more convenient it is than entering a dark closet and rummaging around among hooks and shelves!



By the use of coat hooks, costing 5 cents apiece, it is easily possible to hang twelve suits or robes in this space, each one being easily found and removed. Can greater capacity be gained in the average good sized closet? Above the large compartment is space for hats, bedding or other things of like character, and below a wide, deep receptacle for shoes and the many other articles that may require a place out of the way.



The cabinet is seven feet high and, as in many instances, it can be inset into the bed room wall, so that it utilizes the six inches of wall thickness and really takes up but *one foot of bed room floor space!*

Counting the combined shelf space of the three compartments, it gains $13\frac{1}{2}$ square feet while actually using but the afore-mentioned six square feet of floor space.

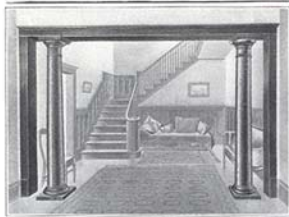
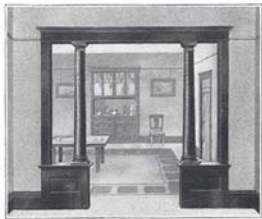
No. 2B-82—Complete as described.....\$12.00

Aladdin Colonnades and Arches

The simplicity of the design of the Colonnade coupled with the extremely low price makes it a very popular one. Made of Yellow Pine, Oregon Fir or Red Oak, by skilled workmen. The price quoted does not include Jambes or trim.

2A-60—Yellow Pine or Fir, net.....\$12.55
2A-62—Oak, net 14.50

For Jambes and Trim add, for Yellow Pine, \$2.60; Oak, \$3.65.



A plain column Colonnade. For smaller homes or ones where extreme simplicity is desired. We furnish these made of Yellow Pine, Oregon Fir or Red Oak. Shipped in the white, that is, unfinished, from Bay City or Chicago.

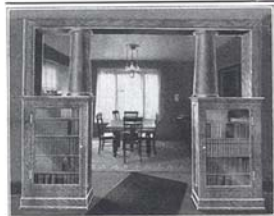
2A-64—Yellow Pine or Fir, net...\$8.00
2A-66—Oak, net 10.00

For Jambes and Trim add, Yellow Pine, \$2.60; Oak, \$3.65.

This "Homcraft" Bookcase Arch has been used in thousands of homes and in every case given perfect satisfaction. The cases are 2½ ft. wide, the columns 8 inches square. Made of Yellow Pine, Oregon Fir or Selected Oak, sent out unfinished, but complete with hardware and leaded glass doors, as shown.

No. 2A-1—Yellow Pine or Fir Arch...\$37.50
No. 3A-1—Selected Oak Arch..... 40.50

Side and head jambes and side and head casings are charged for extra as follows: Yellow Pine, \$2.60; Selected Oak, \$3.65.



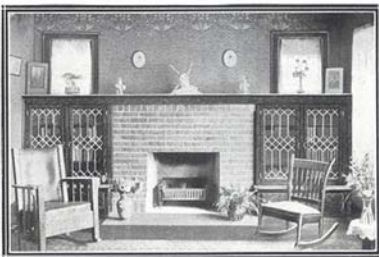
The Colonnade illustrated to the left is very similar to our No. 2A-1, with a few details changed, principal of these being single door, plain glass and round columns in place of the square, as furnished with No. 2A-1. Furnished without jambes or trim but with hardware.

2A-70—Yellow Pine or Fir, net...\$26.50
2A-72—Oak, net 27.50

For Jambes and Trim add Yellow Pine, \$2.60; Oak, \$3.65.

Aladdin Built-in Mantle Book Cases

The space next the fire place has long been devoted to use as a convenient nook for the book shelves. Aladdin designers have struck a happy combination in the cases illustrated here. It is planned to be adaptable to a twelve or fourteen foot room as priced by the widening or narrowing of the trim boards at sides. For anything between a fourteen foot and a sixteen foot room add \$5. Note that the top of bookcase continues across the top of fireplace, incorporating the mantle shelf.



Prices of Book Cases including Mantle Shelf

- No. 2A-40—As shown in photographs. Double doors, three shelves and two drawers below, one on each side, plain glass\$43.50
 No. 2A-42—Same as above, but with leaded glass 49.50
 No. 2A-44—As illustrated, but without drawers below, plain glass 34.25
 No. 2A-46—Same as No. 2A-44, but with leaded glass 40.00

All of above prices in Yellow Pine or Fir. If desired in Oak, add \$3.00.

Aladdin Bath Room Cabinet and Medicine Chest



A splendid combination for installation in your bath room. Gives generous drawer space for linens, towels, bedding and the many bath room accessories. Comes in combination with medicine chest and mirror door. The cabinet is 4 feet from floor to top, 12 inches deep and 26 inches wide. A cupboard, two narrow drawers and four wide drawers complete the cabinet, while the medicine chest at the top has strong plain mirror door and shelves inside. The whole combination is strongly built, neatly finished and easily installed.

2B-80—Price, complete with all hardware, Yellow Pine, \$21.80

Aladdin Medicine Chest



A very convenient addition to any bath room. Made to be placed in a recess in the wall, the face to come flush with the plaster. The complete chest includes all hardware, trim, mirror door, etc. This door has a 14x20 inch best quality French bevel plate mirror. Size of recess required in wall is 20 inches wide, 26 inches high, 4½ inches deep. Has three adjustable wood shelves.

2B-86—Medicine Chest, each\$1.95

Aladdin Built-in Buffets



As a decorative feature, at once dignified and attractive, the built-in buffet and the columned arch, or combination arch and bookcase, have become decidedly popular. They conform to the woodwork and become an integral part of the home. The several designs shown here will be furnished for any home. The stock from which they are made is of the very finest to be had. They are all carefully machined and finished, and will please you in every respect.

Any of these features can be installed when house is being erected, or at any later time, after house is completed.

Aladdin Buffet

The photograph on this page shows the buffet in yellow pine, with the white enamel finish conforming to the white woodwork of this particular room. This buffet is very roomy, having four sets of shelves with divided light glass door for each section and five drawers for linen and silver. The two drawers at the bottom are especially large for use as table-cloth receptacles.

Aladdin Buffet, size 4 ft. 6 in. by 7 ft. high by 1 ft. 6 in. deep, net\$33.60

HEMOCRAFT BUILT-IN BUFFET



A well proportioned "Homecraft" built-in side board or buffet has been very popular wherever offered. It is 4 ft. 6 in. wide and 7 ft. high, 14 in. deep. Has a bevel plate mirror back in opening over counter shelf, four drawers and one closet space in bottom section.

- No. 2A-24—Yellow Pine, glazed, clear double strength glass\$26.50
 No. 2A-25—Yellow Pine, glazed leaded Crystal glass\$28.75
 No. 2A-26—Selected Oak, glazed, clear double strength glass\$28.50
 No. 2A-27—Selected Oak, glazed leaded Crystal glass\$31.50
 If side casing, base blocks and cap trim, as shown are wanted, add for Yellow Pine, 70c; Oak, \$1.45.

HEMOCRAFT BUILT-IN BUFFET



A "Homecraft" Buffet which is just what the name indicates. The result of a Craftsman's labor. It stands 7 ft. high and is 5 ft. wide; depth, top section, 14 in.; bottom section, 18 in. Has four large linen drawers in center of base section and two smaller drawers on the sides, suitable for silverware, etc. One large and two small bevel plate mirrors in each buffet. Weight, 300 lbs.

- No. 2A-30—Yellow Pine, glazed with clear double strength glass\$37.25
 No. 2A-31—Yellow Pine, glazed with leaded Crystal glass\$39.00
 No. 2A-32—Selected Oak, glazed with clear double strength glass\$39.75
 No. 2A-35—Selected Oak, glazed with leaded Crystal glass\$41.75
 If side casing, base blocks and cap trim, as shown, are wanted, add for Yellow Pine, 70c; Oak, \$1.45.

ALADDIN HEMOCRAFT BUFFETS

are designed with the object of giving the most convenience combined with the most artistic effects. They are made either of clear yellow pine or Oak, and are sent out by us in the white, that is, unfinished. We furnish all hardware as shown. Finished glazed with leaded glass as shown or with plain double strength glass.

- No. 2A-20—Yellow Pine Glazed clear double strength glass\$39.75
 No. 2A-21—Yellow Pine, Glazed Leaded Crystal glass\$42.75



Size, 6 ft. 6 in. wide by 5 ft. 6 in. high; depth, 18 in. This cabinet has three large and four small drawers and two doors, three strong shelves in each side section. Best quality bevel plate glass mirror above shelf. This case when finished to conform with the other woodwork in a home will harmonize with nearly any style of furniture. Price, F. O. B. shipping point; weight, 375 lbs.
 No. 2A-22—Selected Oak, Glazed Double Strength glass\$41.25
 No. 2A-23—Selected Oak, Glazed Leaded Crystal glass\$44.75



Additions to Aladdin Houses



Designed for use on any House

THE additions shown on this page were designed to meet the demands which we have had in the past for additions to dwelling houses. Several different designs are shown so the purchaser may select one that will be best adapted to his requirements.

The exterior finish of these additions will be furnished to harmonize with the appearance of your house without extra cost. The prices are quoted with and without lath and plaster or plaster board, and interior finish of the enclosed part.

Addition No. 1

Addition No. 1 can be used as a kitchen with pantry, or as an extra bedroom, as desired, or will be very well adapted for an entryway, with either pantry or bath.

Size	Net Price without Plastering	Net Price with Plastering
8 x 10	\$58.00	\$66.00
8 x 16	74.00	83.00
10 x 16	118.00	128.00
10 x 18	126.00	137.00
10 x 20	134.00	146.00
10 x 24	148.00	162.00



Floor Plan—
Addition No. 1



Addition No. 1

Addition No. 2

Addition No. 2 has an enclosed part, which is suitable for a pantry or bath, and has an open porch.

Size	Net Price without Plastering	Net Price with Plastering
6x14, enclosed part, 6x 8 } open part, 6x 6 }	\$62.00	\$66.00
8x16, enclosed part, 9x 8 } open part, 7x 8 }	\$6.00	92.00
10x18, enclosed part, 10x10 } open part, 10x 8 }	116.00	125.00



Floor Plan—
Addition No. 2



Addition No. 2

Addition No. 3

Addition No. 3 gives you an enclosed part for pantry or bath, grade cellar entrance, inside stairs leading from the kitchen, and a commodious porch. Cellar, stairs, and steps leading from the kitchen included in the price.

Size	Net Price without Plastering	Net Price with Plastering
8x16, enclosed part, 8x10 } open part, 8x 6 }	\$95.00	\$103.00
8x20, enclosed part, 8x10 } open part, 8x10 }	104.00	108.00
10x20, enclosed part, 10x10 } open part, 10x10 }	120.00	130.00



Floor Plan—
Addition No. 3



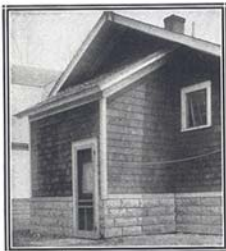
Addition No. 3

Addition No. 4

Addition No. 4 is a simple enclosed, rear entrance with cellar stairs. It can, of course, be attached to any house as all material necessary to complete the addition is included. Paints for two coats of any color to match balance of house as well as nails, hardware, etc., are furnished at the price quoted. See floor plan herewith. Price, net, \$39.00.



Floor Plan—
Addition No. 4



Addition No. 4

Addition No. 5

To meet the popular demand for sleeping porches and sun rooms, arranged for screening in summer and sash in winter, we are offering in Additions Nos. 5 and 6 two very convenient and practical designs which have found especial favor with our customers.

The Addition No. 5 is furnished in size 10 x 6 ft., two stories high. This size is excellently adapted for average usage. The upper porch is large enough for a double bed, or two single beds, or three cots.

The popularity of the sleeping porch needs no comment here. This makes a splendid addition to any home. Screens are furnished for all openings and screen door.

The price, net, \$87.25, includes paints for two coats outside, oils, stains, and varnishes for inside finish.

Any colors of paints can be furnished for outside body and trim to correspond with balance of house.

Addition No. 6



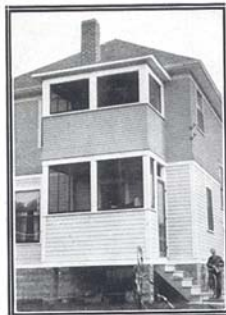
Addition No. 6 is furnished in size 14 x 7 ft. The sleeping porch will accommodate two double beds, nicely, while below you have, in addition to the open porch, an enclosed part, size 8 x 7 ft., which can be used for a pantry, bath, store, or fuel room, door to open into the enclosed part, either from porch or kitchen.

Price, net, with screens for all openings and screen door, \$130.50. This price includes inside walls finished with matched interior material. Price also includes paints for two coats outside and oils and stains for inside finish.

Any colors of paints can be furnished to correspond with balance of house.

If enclosed part is wanted finished inside with lath and plaster, or plaster board, add \$10 to above price.

Prices on glazed sash for sleeping room to be used in winter will be furnished upon application.



Addition No. 5



Addition No. 6

Sovereign Summer Cottages



T

HE many pleasures and advantages of summer cottage life need no argument here. Thousands and thousands of American families enjoy this stimulating life for several weeks or months each summer.

Sovereign Read-Cut Summer Cottages are distinguished from most summer cottages by the superiority of materials and construction and, while being wonderfully low in price, give every service demanded over a long period of years. Not the least of the pleasures derived by our customers many times is that of actually erecting the cottage themselves. Their vacation is planned with the arrival of the material and the joy of creating and building *their own* cottage lends a keen appreciation to its use in future years.

The frames of all summer cottages are of good, clean No. 1 Huron Pine or Yellow Pine, dressed; of proper size and design, not greatly dissimilar to dwelling houses. The siding is practically clear Yellow Pine or Oregon Fir, tongued and grooved with the bevel face, giving outside appearances of clapboard siding. The rooms are all open to the rafters, the partitions being of clear Yellow Pine or Oregon Fir. Ceiling finished both sides. The flooring is clear Yellow Pine or Oregon Fir.



Additional Sovereign Summer Cottage designs are contained in a special booklet which will be sent to you upon request.

Specifications for Sovereign Summer Cottages

The following specifications apply generally to all summer cottages, but vary slightly in some cases, according to the size of the cottage; that is, in relation to size of sills, joists, and rafters.

Foundation sills, 4 x 6 in.

Joists, 2 x 6 in.

Studding, 2 x 4 in.

Rafters, 2 x 4 in.

Siding, $\frac{5}{8}$ -in. tongued and grooved, bevel face.

Flooring, 4 in. matched.

Partitions, matched ceiling.

Roof, sheathing $\frac{3}{4}$ in.

Shingles or roofing.

Doors, windows (glazed).

Hardware, paint for two coats outside, any color, nails, locks, hinges.

No plaster or plaster board furnished.



The Luna

\$368.60

Price, \$388.00
Cash discount, 5%
Net price, \$368.60

ABUNDANT space in this trim little summer cottage. Well screened porch of good size.

Three sleeping rooms, living room and kitchen on inside. This cottage was built in three days by one carpenter and two helpers. You will note that it can be set on a very narrow lot. Gives splendid satisfaction. Four mills in the United States enable us to make quick shipment to your station. See general specifications, page 95, for further information. See Terms on page 2.



Floor Plan—The Luna



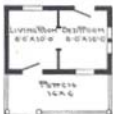
The Asbury

\$144.40

Price, \$132.00
Cash discount, 5%
Net price, \$144.40

THE Asbury is a cosy little summer cottage of pleasing lines—built for two. The porch can be screened in to give an outdoor living room. The front door has glass in the upper portion, giving additional light to the living room.

This is one of the old original summer cottages and has been erected in hundreds of towns and cities throughout the country. At price quoted you get nails, paints, glass—everything to complete the Asbury. See general summer cottage specifications, page 95 and Terms on page 2.



Floor Plan—The Asbury



The Seaford

\$397.10

Price, \$418.00
Cash discount, 5%
Net price, \$397.10

ACOSY summer home. Plenty of space on front porch—can be used for open-air dining room or sleeping room. Three bed rooms, dining room, living room and kitchen on inside. Plenty of light and air—an abundance of space. Is really one of the neatest cottages imaginable. See general summer cottage specifications, page 95 and Terms on page 2.



Floor Plan—The Seaford

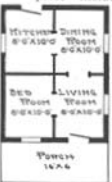


The Drayton

\$188.10

Price, \$198.00
Cash discount, 5%
Net price, \$188.10

THE Drayton sells for less than \$200. When you consider that price includes absolutely everything needed for the erection and completion of the entire building you will appreciate the surprising price. Two bed rooms can be arranged by combining living room and dining room. See General Specifications on page 95 and Terms on page 2.



Floor Plan—The Drayton



The Betcone

\$266.00

Price, \$280.00
Cash discount, 5%
Net price, \$266.00

THE plan of The Betcone is a five-room cottage with ample porch. The three bed rooms are plenty large enough for a double bed in each. The living room is also used as a dining room. Kitchen, with rear door, is at rear. Here is one of our best sellers and always gives the greatest pleasure to owners. Easily and quickly put up. See general summer cottage specifications, page 95 and Terms on page 2.



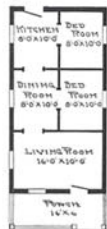
Floor Plan—The Betcone



The Shoreview \$275.25

Price, \$295.00
Cash discount, 5%
Net price, \$275.25

THE Shoreview is a comfortable summer home of five rooms. A good 10 x 16 ft. living room is located at the front. Behind the living room are two bed rooms, dining room, and kitchen, making a most complete floor plan with the porch across the front. See General Specifications on page 95 and Terms on page 2.



Floor Plan—The Shoreview



The Genesee

\$296.40

Price, \$312.00
Cash discount, 5%
Net price, \$296.40

WHETHER erected this cottage has had the most favorable comment. You will save a least \$150 in purchasing this material, and at the



Floor Plan—The Genesee

same time have as strongly built house as is ever erected for summer cottage purposes. Bed rooms are one side of house and dining room and kitchen on other. A splendid type of cottage. See General Specifications, page 95 and Terms on page 2.



The Shasta

\$443.65

Price, \$467.00
Cash discount, 5%
Net price, \$443.65

A BIG summer cottage at a small price. Note the 36-ft. porch running all the way across the front of the building. Another one of our



Floor Plan—The Shasta

pioneer designs. Always makes a good impression and saves a good deal of money. See General Specifications, page 95 and Terms on page 2.



The Melbourne \$280.25

FANNING breezes from cooling waters have free access to all parts of the Melbourne.

The interior arrangement allows a surprising amount of room. Large kitchen and dining room at rear with four outside openings. Two large bed rooms at the front can accommodate a double bed or two single cots.

The Melbourne is the pride of many summer resorters. It will be built along many shores and choice spots in the mountains this year. See General Specifications on page 95 and Terms on page 2.

Price, \$295.00
Cash discount, 5%
Net price, \$280.25



Floor Plan—
The Melbourne



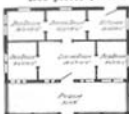
The Pinehurst \$465.50

THE Pinehurst is one of the most attractive summer homes imaginable.

Wide porch—30 x 8 ft., casement windows, wide overhanging eave studded with brackets—where could you better it?

The three corner bed rooms are well lighted and easily ventilated and plenty large enough to accommodate a double bed in each. Dining room and living room are both of good size. You can erect it yourself or two men would have no difficulty in completing it in two days' time. Spend this year's vacation in your summer home—the Pinehurst. See General Specifications on page 95 and Terms on page 2.

Price, \$490.00
Cash discount, 5%
Net price, \$465.50



Floor Plan—
The Pinehurst

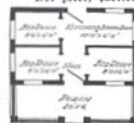


The Statler \$237.50

YOU can erect the Statler yourself this vacation. And you can do it in a few days' time and save the cost of carpenter work. Just the right

size for the family of four or five. Plenty of ventilation throughout—bed rooms plenty large enough for double bed or two cots. The porch is large and airy, affording an opportunity for out-door sleeping. Enjoy a few days' time this vacation building your own summer home. See General Specifications on page 95 and Terms on page 2.

Price, \$250.00
Cash discount, 5%
Net price, \$237.50



Floor Plan—
The Statler



The Oceanport \$389.50

LARGE porch screened with plenty of space inside in The Oceanport.

Extra high ceilings insure good ventilation and cool rest at night. The

price quoted includes everything necessary to complete this cottage. Different type of roof is designed for this cottage and it makes an impressive appearance. Many buyers of this design in 1915 erected it themselves. See General Specifications on page 95 and Terms on page 2.

Price, \$410.00
Cash discount, 5%
Net price, \$389.50



Floor Plan—
The Oceanport

Popular Aladdin Garages

A LADDIN Garages are staunchly built of the same splendid grades of material entering into the construction of our dwellings. Quick shipment, simply and easily erected, paints of colors to match your house included. Walls and roof furnished in metal at same price. A special feature is made of quick shipment. Standard material is always carried in stock so that your garage is loaded very quickly.

The Buick Garage Complete

\$46⁵⁵

Price
includes all
Material

Admits
Car with top
raised

Any
Colors of
Paints
Furnished

Fully
Guaranteed



A LADDIN Garages have led the market for ten years. Staunch construction, high grade material and rock bottom prices have made an irresistible appeal upon automobile owners throughout the land. The Buick, illustrated on this page, is made in two standard sizes, the 8x14 ft. size being designed for Ford cars. It is just large enough to admit a Ford touring car with the top either up or down. Any garage of smaller dimensions will not admit the Ford car. This size sells complete with all material cut to fit, paints to match the colors of your house, hardware, locks, nails and roofing at \$49. Cash discount, 5%. Net price, \$46.55.

Size 10x16 ft. is of the same construction and sells for \$67. Cash discount, 5%. Net price, \$63.65. This will admit a car of 110 inch wheel base.

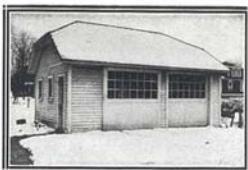
All garages shown are furnished without floors, as practically all auto owners prefer to build floor of concrete.



The Winton

Size, 12x29 ft. Price, complete, either wood or metal, \$121. Cash Discount, 5%. Net Price, \$114.95. See Terms on Page 2.

THE Winton will take the largest car on the market, with ample room at sides for working about car and for supplies. It has swinging glass doors and one window on each side. It is of a splendid type and always looks good wherever it may be erected. Painted to match your house.



The Packard

Size, 20x20 ft. (two cars). One door. Either wood or metal. Price, \$198. Cash Discount 5%. Net Price, \$188.10. Extra for double doors, \$10. See Terms on Page 2.

Size, 30x20 ft. (three cars). Two doors. With double sliding doors, either wood or metal. Price, \$262. Cash Discount, 5%. Net Price, \$248.90. See Terms on Page 2.

THE broken roof lines of the Packard give it an individuality immediately apparent. The building is furnished with five windows, large glass door, and small door.



The Maxwell

Size, 10x16 ft. Price, \$107. Cash Discount, 5%. Net Price, \$101.65. See Terms on Page 2.

A SHINGLE-COVERED Garage that nicely matches any house. Roof extends in front to afford protection during inclement weather. Eaves have exposed rafters. Good, wide double doorway. Compact, but convenient in every respect. Plenty of light.



The Peerless

Size, 20x20 ft. (two cars). One door. Either wood or metal. Price, \$246. Cash Discount, 5%. Net Price, \$233.70. Extra for double doors, \$10. See Terms on Page 2.

DISTINCTIVE and attractive. The Peerless will do credit to any surroundings. It is furnished with siding half-way up and shingles on upper part of wall. Very wide eaves with supporting brackets set off building excellently. Large door with glass, together with windows on two other sides, give plenty of light.

Metal Summer Cottages and Garages

Any of the designs of summer cottages and garages will be furnished in metal sides and roof at the prices quoted. This metal is high grade, strong, and comes

in the shingle and siding pattern as illustrated on this page. Metal garages can be built within the fire limits in any city. Paint of any color for outside is furnished.





\$1
A Knot
Lumber

Aladdin Read-Cut Barns

Light
Weight
Wood
Frame



THE word Aladdin means as much to barns as it does to homes. Aladdin barns are built for strength and durability. The quality of the material is far superior to that found in the average barn.

Another feature of the Aladdin barn is the simplicity of erection. It is not always convenient for farm owners to secure the services of carpenters. The cost of employing carpenters, paying their traveling and living expenses while they are away from the city besides their regular wages, often makes it impossible to engage skilled help. This has been overcome in the Aladdin system, and the progressive farmer is building Aladdin barns and farm buildings himself.

Aladdin material is shipped to you all cut-to-fit, marked and numbered, together with complete instructions and illustrations for erection. One-third of the time is saved and skilled help is unnecessary. Farm hands have erected a large number of Aladdin barns, and without the least trouble. You can save a third by building an Aladdin.

Each Aladdin Barn is very strongly constructed, in fact, stronger than it is usual to build barns of the same size erected by usual methods. The timber in every barn is heavier and stronger than it is really necessary to use in a building of the same size. We appreciate the great weight and strains that are put in farm barns at times, and each barn is constructed so as to stand a greater weight than it will ever be called upon to hold.

They are not only constructed of very heavy timber, but are braced and counter-braced wherever this bracing will increase the strength of the building.

Each barn has material cut to fit ready to nail in place the same as all our other regular dwellings and houses. In fact, they are better finished than it is usual to build ordinary barns throughout the country. All of the material is dressed so that the inside of each building presents a finished appearance and is not merely of rough unfinished lumber.

We furnish not only the material for each barn complete, but it is also manufactured ready for erection, so that it can be completed very easily and quickly, without the necessity of employing high-priced skilled carpenter labor.

We furnish all the different kinds and sizes of nails required in the erection of the building; heavy barn-door tracks and rollers for the large doors to slide upon; hinges and locks for the smaller doors. The windows have the glass already in them.

We will furnish any colors of paint that you may desire for the outside of the building, two coats; shingles or roofing, whichever you prefer, for the roof of the building.

We have quoted the prices on

the barns so that you can purchase either the barn itself, or so that you can leave out the first and second floors and the stalls, or so that you can purchase the building with the first floor added, or with the second floor added, or with both floors added. We have also quoted the price separate on the stalls, so that you can add any number of stalls you desire with the building. For example, a gambrel roof barn, size 20x40 ft., without first or second floors or mangers, would cost \$282.80. First floor furnished with the barn would cost \$73.33 extra, or \$356.13 for barn and first floor complete. For a gambrel barn, size 20x40 ft., with first and adding second floors and mangers for two stalls the cost would be \$397.87 complete.

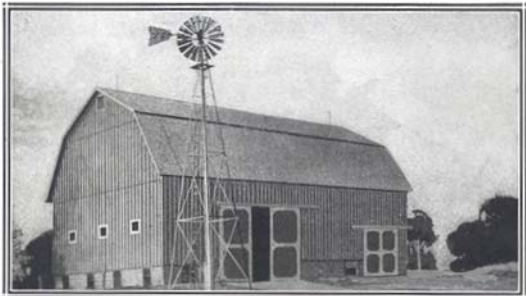
Each barn as we furnish it, and as listed in the cost on the barns, will include a second floor above the stalls at one end. This second floor will be twelve feet long and the width of the end of the barn, and is always included in the first cost of the barn.

The complete second floor is quoted separately, so that if you wish an entire second floor covering the whole size of the barn, instead of the floor over the stalls, only figure it without including the twelve feet which we include in each regular price.

Many people prefer to purchase the barn without the first floor, which is really un-

necessary in many cases, where hay and grain are intended to be stored into mows. Others prefer to put in either a part or the entire first floor in cement, so that we have quoted the price of the barn exclusive of both floors and stalls, and have listed separate the cost of each. This will enable you to purchase the barn itself and add either the first or second floor or any number of stalls desired.





\$1
A Knot
Lumber

Gambrel Barn

Highest
Quality
Lumber

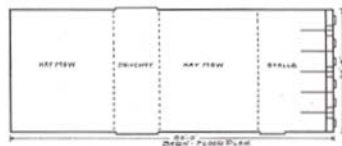
THE Gambrel and Gable Roof Barns are here shown. The construction and material of both barns are exactly the same, the only difference being in size and design. These barns have given the greatest satisfaction and service on the western plains of Nebraska and Kansas, where they are subjected to the heaviest strains of wind and storms. This goes to prove the great strength and stability of the construction.

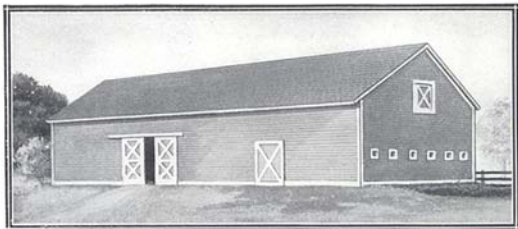
Below we have listed the prices for both designs, gambrel and gable roofs, while on the next page the specifications are shown that include either the gambrel or the gable design. The gable barn is illustrated on the following page.

Gambrel and Gable Barns

Height of Side Walls of Gambrel Barn is 12 feet 0 inches, and of Gable Barn is 15 feet 0 inches. Prices Given are for Either Style. Gable Roof Barn
Illustrated on Following Page.

Size	Price Net Cash	First Floor		Second Floor	Stall with Manger
		Extra	Extra	Extra	Extra
16 x 24 ft.	\$228.00	\$35.20	\$10.38		\$5.00
20 x 30 ft.	300.00	53.00	20.40		5.00
20 x 40 ft.	382.80	73.33	31.74		5.00
20 x 50 ft.	457.20	91.67	43.08		5.00
20 x 60 ft.	531.60	110.00	54.42		5.00
20 x 70 ft.	606.00	128.33	65.76		5.00
20 x 80 ft.	680.40	146.67	77.10		5.00
20 x 90 ft.	754.80	165.00	88.44		5.00
20 x 100 ft.	829.20	183.33	99.78		5.00
24 x 30 ft.	351.00	66.00	24.48		5.00
24 x 40 ft.	433.50	88.00	38.68		5.00
24 x 50 ft.	517.50	110.00	51.68		5.00
24 x 60 ft.	600.00	132.00	65.28		5.00
20 x 40 ft.	530.00	110.00	47.60		5.00
20 x 50 ft.	600.00	137.50	70.27		5.00
20 x 60 ft.	700.50	165.00	92.93		5.00
20 x 70 ft.	795.00	192.50	115.60		5.00
20 x 80 ft.	891.00	220.00	138.27		5.00
20 x 90 ft.	986.25	247.50	150.60		5.00
20 x 100 ft.	1,081.80	275.00	173.27		5.00





\$1
A Knot
Lumber

Gable Barn

Highest
Award
World's
Fair

THE construction of the Gable Barn is the same as the Gambrel Barn—strong and durable. Specifications for this barn are listed below, as both the gambrel and gable barns are identical with the exception of the roofs. A large number of sizes and prices are listed on previous page.



GAMBREL AND GABLE BARN SPECIFICATIONS

Gable Roof Barn Illustrated Above

Sills, 6 x 8 in.
Studding for the side walls and gables of barn, 2 x 6 in.
Rafters, 2 x 6 in.
Collar beams, 2 x 6 in.
Cross braces in outside walls, 2 x 6 in.
Anchor brace, 2 x 6 in.
Plates of top walls, doubled, 2 x 6 in.
First floor joist, 2 x 12 in.
First floor flooring, 2-in. plank.
Second floor joist, 2 x 8 in.
Second floor flooring, inch lumber.

Stall studding, 2 x 4's.
Stall siding, inch lumber, dressed.
Mangers attached to stalls, inch lumber, dressed.
Feed boxes, inch lumber, dressed.
Roof sheathing, inch lumber, dressed.
Roofing of Cedar shingles for roof.
Siding, perpendicular barn boards or horizontal matched siding, whichever you prefer.

Windows, 18 x 24, glazed, glass measurement.
Doors, double and single.
Barn door tracks and rollers for sliding doors.
Hinges and locks for swinging doors.
All nails of various sizes for entire building.
Two coats of paint, any color desired for outside.
Complete instructions and illustrations for the erection.
Total height of side walls, 12 ft. gambrel, 15 ft. gable.

Aladdin Special Barn

\$247.95

Price, \$261.00
Cash discount, 5%
Net price, \$247.95

THE Aladdin Special was built to meet the great demand for a barn large enough to shelter two or three horses with wagons, etc. Plenty of room on the first floor for three stalls, with a large mow on second floor for hay, straw and grain. At the price quoted, the second floor is included, but the first floor is omitted, as many owners prefer a cement or concrete first

floor on account of the convenience in cleaning stalls, etc. Two coats of paint with trim for the outside of barn are included.

SPECIFICATIONS

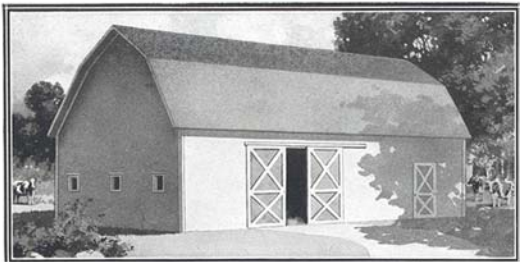
Aladdin Special Barn

Size, 16 x 24 ft. Net Price, \$247.95.

See Terms on page 2.

Sills, 6 x 6 in. Studding, 2 x 4 in.
Rafters, 2 x 4 in. Second floor joists, 2 x 8 in.
Siding, 1/2 in., matched; roof sheathing, 1 in., dressed. Flooring, second floor, 1-in. lumber. Shingles or roofing for roof.
Large door, 8 ft. 4 in. x 9 ft. 6 in. Small door, 3 ft. 6 in. x 7 ft. 2 in. Windows, sliding sash, glass in place. Paints, any colors, two coats, outside. All hardware, nails, barn-door tracks, hinges. At the price quoted above, second floor is included. Add \$44 to the above price for first floor of 2-in. planks, including first floor joists of 2 x 8 in.





Aladdin Drednot Special Process Barn

DEMAND for a fire-resisting barn of low cost led us to make some extensive investigations and experiments. Lightning, fire and wind are the worst enemies of the farmer's barn, and to guard against them in an effective way much time and expense have been put forth—and successfully.

Government statistics pointed the way. Our investigations led us to seek the assistance of the United States Government to determine more accurately the peculiarities of lightning. We found that in a record covering fifty-two years no building of steel or iron that was struck by lightning was destroyed by fire.

This astonishing fact definitely settled for us the main question. We then took up the question of wind strains, rust, etc. We have so thoroughly braced the barn that the action of the strongest wind is thoroughly guarded against.

Special processed iron is used for side walls and roof of the Drednot, insuring long life and protection from rain and snow.

SPECIFICATIONS

Sills, 6 x 6 in. Studding for side walls and gables, 2 x 4 in. Rafters, 2 x 4 in. Cross braces in outside walls, 2 x 4 in. Under braces, 2 x 4 in. Plates of top walls, doubled, 2 x 4 in.

First floor joists, 2 x 12 in.

First floor flooring, 2-in. planks.

Second floor joists, 2 x 8 in.

Second floor flooring, inch lumber.

Stall studding, 2 x 4 in.

Stall siding, inch lumber, dressed.

Mangers attached to stalls, inch lumber, dressed.

Feed boxes, inch lumber, dressed.

Siding for side walls, special process iron.

Roof, special process iron.

Windows, single sash, glazed with frames.

Doors, double and single.

Barn door track and rollers for sliding doors.

All nails of various sizes for entire building.

Paints of any color for exterior roof and side walls of barn, two coats.

Complete instructions and illustrations for erection.

Sizes and Prices Aladdin Drednot Barns

Size	Price		First Floor Extra	Second Floor Extra	Stall with Manger Extra
	Cash	Net			
16 x 24 ft.	\$193.80	\$35.20	\$10.38	\$5.00	\$5.00
20 x 30 ft.	262.65	55.00	30.40	5.00	5.00
20 x 40 ft.	324.70	73.33	31.74	5.00	5.00
20 x 50 ft.	388.62	91.67	43.08	5.00	5.00
20 x 60 ft.	451.86	110.00	54.42	5.00	5.00
20 x 70 ft.	515.10	128.33	65.76	5.00	5.00
20 x 80 ft.	578.34	146.67	77.10	5.00	5.00
20 x 90 ft.	642.60	165.00	88.44	5.00	5.00
20 x 100 ft.	705.08	183.33	99.78	5.00	5.00
24 x 30 ft.	298.35	66.00	24.48	5.00	5.00
24 x 40 ft.	368.48	88.00	28.08	5.00	5.00
24 x 50 ft.	439.88	110.00	51.68	5.00	5.00
24 x 60 ft.	519.00	132.00	65.28	5.00	5.00
30 x 40 ft.	432.50	110.00	47.60	5.00	5.00
30 x 50 ft.	515.10	137.50	70.27	5.00	5.00
30 x 60 ft.	595.43	165.00	92.93	5.00	5.00
30 x 70 ft.	675.75	192.50	115.60	5.00	5.00
30 x 80 ft.	757.35	220.00	138.27	5.00	5.00
30 x 90 ft.	838.32	247.50	159.60	5.00	5.00
30 x 100 ft.	918.53	275.00	173.27	5.00	5.00



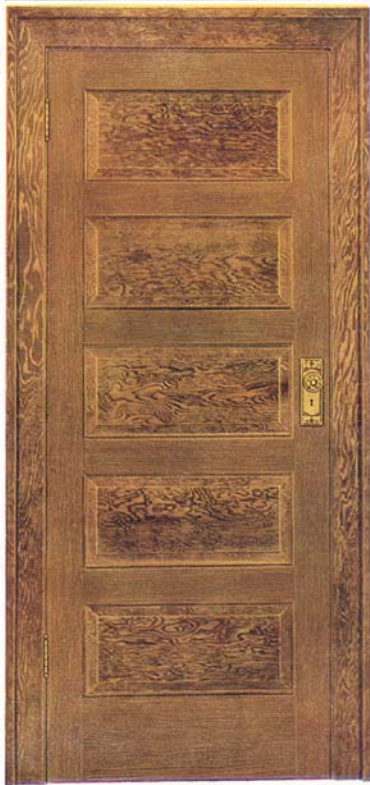
Aladdin Hunter's Lodge

This building is designed for settler's house or hunter's lodge. It is built just like other houses, strong and substantial. One door in front and four windows, two on each side. Height of side wall, 7 ft. 6 in. No plaster board or lath and plaster are furnished with this house at the price quoted.

Size, 12 x 16 ft. Price, \$116. Cash Discount, 5%. Net Price, \$110.20. See Terms on page 2.

Interior Doors and Lock Set Trimmings

Furnished with Every Aladdin Home



The Aladdin Fir Door

THIS beautiful perfect-grain door with five cross panels is furnished for every Aladdin House. A real hardwood, but softer than oak or birch. Hard enough to take a hardwood polish, but soft enough to work easily. Aladdin Houses are finished better than most new houses in your neighborhood. We guarantee all your inside finish to be of exactly the same high-class material that this picture was taken from—clear lumber, beautiful grain—the best obtainable. Any stain furnished.

HERE are some of the many beautiful details that are to be found in Aladdin Homes.

On careful inspection you will find that money cannot buy a better quality. Fir is distinguished for the wonderfully silky texture and softness of grain. You will never find two panels of the same design of grain and each one is an interesting study in itself.

The lock set trimmings for the interior doors are of the richest finished brushed brass.

The design on the escutcheon is an oak leaf pattern that stands in relief on the frosted background.

This beautiful lock set is made exclusively for Aladdin Houses.





PICK YOUR FAVORITE COLOR for YOUR Aladdin HOME

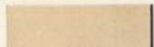
Aladdin Road Colored Lead in Paste Form is ground in pure raw linseed oil, to the consistency of white lead. There is no more durable economical and practical combination of paint pigments in paste form. Aladdin Road Colored Lead is guaranteed to give perfect satisfaction.



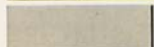
CREAM
For Tint Use
Flash Use
Conceal Base
White



CANARY
For Tint Use
Flash Use
Conceal Base



FLESH TINT
For Tint Use
French Gray
Buff
Face



FRENCH GRAY
For Tint Use
White
Landscape
Silver Gray



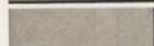
MUSKETEER BRICK
For Tint Use
Landscape
Wood Quarter
Leather Brown



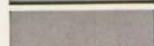
BUFF
For Tint Use
Green
Flash Use
Leather Brown



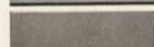
PEARL GRAY
For Tint Use
White
French Gray
Lead Color



LEMONT STONE
For Tint Use
Lead Color
Silver Flash
Wood Quarter
Dark



LAVENDER
For Tint Use
Silver Gray
Warm Dark
French Gray



LEAD COLOR
For Tint Use
Landscape
Silver Flash
Lead Color



FAWN
For Tint Use
Flash Use
Dark French Gray
Conceal Base



CHESTNUT BROWN
For Tint Use
Buff
Dark French Gray
Green



DARK TERRA COTTA
For Tint Use
Face
Buff
Green



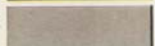
RED
For Tint Use
White
French Gray
Leather Brown



SEAL BROWN
For Tint Use
White
Green
Buff



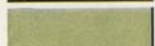
LEATHER BROWN
For Tint Use
Green
Conceal Base
White



SILVER GRAY
For Tint Use
Landscape
Lead Color
French Gray



RED QUARD WOOD
For Tint Use
Musketeer Brick
Warm Dark
Leather Brown



PEA GREEN
For Tint Use
Musketeer Brick
Wood Quarter
White Green



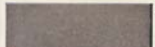
OLIVE
For Tint Use
White
Silver Gray
Leather Brown



WILLOW GREEN
For Tint Use
Dark Quard
Silver Flash
Leather Brown



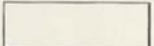
OLIVE DRAB
For Tint Use
Silver Gray
French Gray
Leather Brown



WARM DRAB
For Tint Use
French Gray
Lead Color
Leather Brown



GOLDEN OLIVE
For Tint Use
Silver Flash
Green



WHITE



BLACK

Johnson's Wood Dyes for Aladdin Homes

Johnson's Wood Dye is made in various standard shades. We have adopted the six shades shown below on Oregon Fir, this being the wood furnished by us for all Aladdin homes. These shades are especially adapted for coloring Oregon Fir. Johnson's Wood Dye is a Dye in every sense of the word. It penetrates so deeply that the natural color is not disclosed if the wood becomes scratched or marred. It brings out the beauty of the grain, and should not be combined with Varnish Stains which remain on the surface, giving a pearly, cheap looking effect which shows every scratch and mar.

The finish of the interior woodwork in Aladdin homes has been given serious and careful attention, and after investigating the best known brands of Wood Dye, Stain and other finishes, we have decided to supply only the JOHNSON'S WOOD DYE with each of our houses, knowing that they are entirely different and superior to any other article now on the market.

JOHNSON'S WOOD DYE does not contain any fish oils whatever—like most first class products, it answers one purpose only—it dyes the wood—a finish must be applied over it.



No. 123 DARK OAK



No. 131 WALNUT



No. 128 LIGHT MAHOGANY & CHERRY



No. 129 DARK MAHOGANY



No. 126 LIGHT OAK



No. 125 MISSION OAK

Aladdin Paints and Lead are Guaranteed and Insure Durability and Lasting Color

MODERN LIGHTING FIXTURES AT MODERATE PRICES



3B-1654—This cast brass bracket of beautiful design extends from the wall 5 in. The back plate is 6 in. wide by 9 in. long. Bracket finished in brush brass and black. Silk shade is 6 in. in diam. and can be furnished in tan or old gold silk.\$4.30



3B-1662—Bracket with back plate of cast Laurel Leaf design. Bracket extends 5 1/2 in., and is finished with beautiful glass shade with tulip design in natural colors.\$3.65

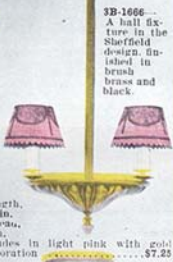


3B-1656—This plain Colonial bracket, finished in brush brass and black. Extends from the wall 5 in. and is furnished with shade in light blue or old gold silk.\$5.75



3B1660—A most attractive semi-indirect for the home. Length of fixture, 34 in. The tulip design bowl, hand decorated in natural colors, is 10 in. in diameter and 13 1/2 in. deep.\$12.25

3B-1666—A hall fixture in the Sheffield design. Finished in brush brass and black.



3B-1656—This 3 light Colonial fixture is 34 in. long with a spread of 18 in. Is finished in brushed brass and black.

Length, 34 in. Spread, 8 in. Shades in light pink with gold decoration.\$7.25

3B-1664—Sheffield bracket finished in brush brass and black.



Extends 6 in. Silk shade 6 in. diam.

Can be furnished in tan, old rose or old gold. \$3.95



Silk shades are 6 in. in diameter and can be furnished in light blue, tan or old gold.\$9.25

Sheraton Dining Room Suite \$89⁵⁰



Sheraton Period Late XVIII Century
Dining Room Suite
Reproduced by ALADDIN HOMECRAFT DESIGNERS

TO introduce the artistic designs and exceptional values of Aladdin furniture, we show in this catalog just a few "Homecraft" sets and prices from a large assortment in our general merchant catalog. Every piece of "Homecraft" furniture will be found just what the name indicates; the work of a Craftsman in home furniture building. Our designers are working every day on new and attractive pieces of furniture and we are showing the most complete selection of artistically designed furniture ever offered by any one concern. In our line we have included "Period" furniture, furniture designed to appeal to the most artistic tastes, and inexpensive furniture for the newly weds who must economize in furnishing their home. All prices following are net.

THE SHERATON STYLE OF FURNITURE was by Thomas Sheraton, who was perhaps the last of their names as originators of types of furniture.

The suite is complete, consisting of the buffet, the china closet, table, serving table, and chairs, conceived during the late eighteenth century of the great English designers who have left which have become permanent works of art, china closet, table, serving table, and chairs, ured with genuine leather. Homecraft construction throughout.

The Buffet is a most artistic and attractive conception. The main top is 22 x 54 in. The bevel French plate glass mirror, 10 x 46 in. It has eight legs tapering to the bottom, with spade feet, three large drawers (one lined for silver) through the center, and two roomy cupboards with slab doors, one at each end. The end panels are beautifully finished and the whole piece is a work of art.

The China Closet is an exact match in design, material, and finish—for the rest of this suite. The graceful but simple lines will appeal when you consider that one hundred years from now this set will be just as it is to-day. The main top is 17 x 39 in. The glass in doors are 14 x 42 in. and in the side 10 x 42 in. The cabinet is furnished with three adjustable shelves, and it is 64 in. high, furnished in dull mahogany.

The chairs are designed to conform with the balance of the dining room furniture. Finished in mahogany, equipped with a slip seat, which contains nine springs and is covered with genuine leather. Homecraft construction throughout.

The Extension Table is simple, yet very artistic. It has six legs as shown, the two center ones being connected. The table top extends very slightly above the apron thus adding to the attractiveness. The main top is 48 in. in diameter and extends to 6 ft. long. Furnished in dull mahogany.

The Serving Table While serving tables are not so much in demand as are some other articles of furniture, yet there are many who wish an article of this kind; and, in fact, for a perfectly appointed dining room one is really necessary. This one has a main top 19 x 38 in., and is furnished with full-length drawer, lower shelf, and low back as shown. Furnished in dull mahogany only.

The whole suite is well appointed, rich, simple, and tasty appearing, and will be a source of pleasure as long as used. Furnished in dull mahogany only, and shipped from factory in Wisconsin.

4D-681—Buffet as shown, weight 225 lbs., price	\$29.50
4D-682—Buffet, with low back in place of mirror	24.50
4D-683—China Closet as shown, weight 195 lbs.	17.50
4D-684—6-ft. Extension Table as shown, weight 185 lbs.	16.50
4D-685—Serving Table as shown, weight 85 lbs.	8.50
4D-686—Six Chairs as shown, each 84.85	28.75
4D-690—Dining Room Suite, consisting of one buffet with mirrors as shown, one china closet, one extension table and six chairs	\$9.50

\$24⁵⁰ For this 5 Piece William and Mary
LIVING ROOM SUITE



**William and Mary
XVII Century**

as Reproduced by the Aladdin Homecraft Designers

The combination of names of the period furniture as well as the combination of lines was derived from England and Holland. The type has distinctive points of both English and Dutch furniture popular at the period the name was for—Mary, the Queen of England and her Dutch husband, William of Orange. The set is composed of five different pieces. These are shipped knocked down in corrugated cardboard cartons. All pieces are made of solid oak finished to conform to the period of their origination.

ROCKER Seat measures 18x20 inches; back 23 inches high. Upholstered in Drill, Imitation Leather, Imported Tapestry or Genuine Leather. Weight, 35 lbs.

STRAIGHT CHAIR Seat 16x16 inches; back 22 inches. Weight, 30 lbs. Upholstered in Drill, Imitation Leather, Imported Tapestry or Genuine Leather.

SETTEE Seat 40x20 inches; back 23 inches high. Weight, 55 lbs. Upholstered in Drill, Imitation Leather, Imported Tapestry or Genuine Leather.

ARM CHAIR Seat measures 18x20 inches; back 23 inches high. Upholstered in Drill, Imitation Leather, Imported Tapestry or Genuine Leather. Weight, 35 lbs.

Article	No.	Drill	Imitation Leather	Imp. Tapestry	Genuine Leather
Arm Chair	4A-1800	\$4.20	\$4.95	\$5.25	\$5.90
Rocker	4A-1802	4.65	5.20	5.75	6.50
Straight Chair	4A-1804	2.95	3.85	4.25	5.00
Settee	4A-1806	7.00	7.75	8.95	9.25
Table	4A-1808	6.75	6.75	6.75	6.75
SUITE	4A-1810	24.50	27.50	29.75	31.50

\$24⁵⁰ FOR THIS FIVE PIECE JACOBAN PERIOD
LIVING ROOM SUITE



**JACOBAN PERIOD
XVIII CENTURY**

AS REPRODUCED BY ALADDIN HOME CRAFT DESIGNERS

A companion suite to the one shown above. Five large massive pieces of solid oak furniture upholstered in genuine leather for less than thirty-two dollars, about \$6.50 each as an average price, and every piece of this furniture is guaranteed absolutely.

ARM CHAIR Seat measures 18x20 inches; back 23 inches high. Upholstered in Drill, Imitation Leather, Imported Tapestry or Genuine Leather. Weight, 35 lbs.

STRAIGHT CHAIR Seat 16x16 inches; back 22 inches. Weight, 30 lbs. Upholstered in Drill, Imitation Leather, Imported Tapestry or Genuine Leather.

SETTEE Seat 40x20 inches; back 23 inches high. Weight, 55 lbs. Upholstered in Drill, Imitation Leather, Imported Tapestry or Genuine Leather.

ROCKER Seat measures 18x20 inches; back 23 inches high. Upholstered in Drill, Imitation Leather, Imported Tapestry or Genuine Leather. Weight, 35 lbs.

Article	No.	Drill	Imitation Leather	Imp. Tapestry	Genuine Leather
Arm Chair	4A-1812	\$4.20	\$4.95	\$5.25	\$5.90
Rocker	4A-1814	4.65	5.20	5.75	6.50
Straight Chair	4A-1816	2.95	3.85	4.25	5.00
Settee	4A-1818	7.00	7.75	8.95	9.25
Table	4A-1820	6.75	6.75	6.75	6.75
SUITE	4A-1822	24.50	27.50	29.75	31.50

Crystal Bathroom

Complete \$37⁵⁰ Outfit



This shows a bath room arranged with one of our 3-piece crystal bath room outfits

THE OUTFIT. A five-foot porcelain lined cast iron bath tub, porcelain lined lavatory with five-inch apron and a Siphon wash-down closet combination, constitutes this outfit. Each piece being fitted with nickel plated trimmings to the floor, and every article is guaranteed to be A-Grade and perfect in every respect.

THE TUB is 5 ft. cast iron, made on roomy, graceful lines with a 3-in. roll rim. It is white porcelain enamel lined. Is fitted with a nickel plated connected waste and overflow, No. 4½ Fuller Bath Cocks for hot and cold water and a pair of nickel plated supply pipes. In fact, all fittings to the floor. The tub is guaranteed to be A-Grade, and all fittings are heavily nickel plated and highly polished.

THE LAVATORY is 18x21 in., cast iron, white porcelain enamel lined. Has an 8-in. back with double-wave top and a 5-in. apron. The bowl proper is "D" pattern, 10x14 in. The fittings are all heavily nickel plated and are the very best obtainable. They consist of two brass nickel plated compression basin cocks with china tops, one marked "hot" and the other marked "cold;" one nickel plated trap with waste to the wall and two brass nickel plated supply pipes to the wall, a very attractive appearing lavatory.

THE CLOSET has a highly polished oak tank and seat, tank being fitted with push lever flush valve and has a rubber ball valve. The bowl is vitreous porcelain ware of the

Siphon action wash down style. All trimmings, including nickel plated supply pipes and nickel plated elbow and screws, are furnished. The outfit, in all, is one which would sell regularly at about \$65. We furnish everything complete to the floor as described. If you wish pipe, fittings, etc., with which to install this, send us a diagram of your house, giving all measurements, and we will be pleased to quote you.

It would be impossible for us to get a photograph of a bath room in which the arrangement would be just right to show each fixture in this outfit in such a way as to convey to you how really good an outfit we are offering.

We consider that in this outfit, which is true Aladdin quality, that we are offering you more for your money than it would be possible for you to get elsewhere.

No. 3D-300—Our Crystal Bath Room Outfit, as described; weight about 475 lbs., \$37.50

Above outfit with all connections threaded for iron pipe, \$1.00 additional.

Aladdin Furnace

Pipeless **\$47.50** Pipeless



IN our Aladdin pipeless furnace, we are offering the very latest departure in warm air heating. The principle is positive. Cold air is taken through three 8 x 10 in. registers, placed in the base of the jacket which goes around the furnace proper. The heat is forced upward through a large 14 x 20 in. register placed directly over the furnace. Through this register the hot air passes with great force to the ceiling, and circulates from there to all rooms of which doors have been left open to be heated. The warm air will be so evenly distributed that you will find a variation of less than three degrees between the room where the register is placed and the room farthest away from same, providing, of course, that doors connecting these rooms are left open to give a free circulation.

Furnished for Brick Set or with Galvanized Jacket

In the large cut at the top of the page we show the furnace with a brick jacket. We furnish the furnace complete with all registers and one extra length of 7-in. pipe, with check, damper, and galvanized iron register box, furnace chain and wall plate, and, in fact, everything necessary for installing the furnace with the exception of the brick and mortar. For setting the furnace, you will require about 250 common brick, one sack of cement, and a barrel of sand.

Furnished with Galvanized Jacket

We recommend the furnace with a galvanized jacket for use as a portable furnace, that is, in rented homes or for temporary use in any home or store building. The price is somewhat higher, but, as you will note,

the price at which we sell this furnace is no more than a good heating stove would cost, and with the use of a furnace you gain the space ordinarily taken up by a stove, and, at the same time have the heat in such a way as to be entirely utilized and easily controlled. This furnace will use but very little if any more fuel than an ordinary heating stove, and the prices which we quote are for the furnace complete. No extra pipe, registers, or additional material required with the exception of the brick and cement, which must be purchased for the brick-set furnace.

OUR GUARANTEE

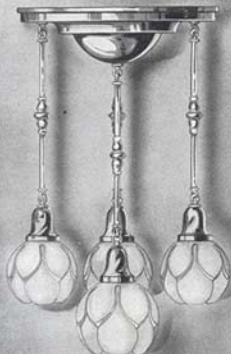
We guarantee our Aladdin pipeless furnace, without restriction, to heat any house containing 15,000 cubic feet or less of air space to an average temperature of 70 degrees Fahrenheit, in the coldest weather, providing connecting doors are left open to give free circulation.

We furthermore guarantee that there will be a variation of less than three degrees between the room where the register is placed and the room farthest from it. If the furnace is found otherwise than described, you may return it, and we will refund full purchase price.

No. 3D-525 Aladdin Pipeless Furnace for brick set, complete (less jacket) as described; shipping weight, 800 pounds.
Price\$47.50
No. 3D-527 Aladdin Pipeless Furnace with galvanized iron jacket, complete as described; shipping weight, 925 pounds.
Price\$55.00

Aladdin Mars Nine Piece \$22.00 Electric Fixture Set..

ALL FIXTURES WIRED COMPLETE WITH SOCKETS ASSEMBLED
READY TO HANG.



No. 3D-1500—Dining Room
Fixture, \$3.00

Length, 34 inches. Spread, 16 inches. A beautiful fixture with lights suspended on $\frac{3}{8}$ inch tubing drops with ornamental breaks. The shades are of water lily design of Delicia white glass.



No. 3D-1508—Hall Fixture, \$0.80
Mission ball with frosted panels and raised clear line stripes.



No. 3D-1510—Chamber
Fixture, \$1.40

(Three of these furnished with each set.)
A very satisfactory fixture for bed room use, furnished with 60-watt bowl type Ferlux glass shade.



No. 3D-1506—Porch Fixture, \$0.65
Furnished with a 7 inch roughed-inside glass ball.



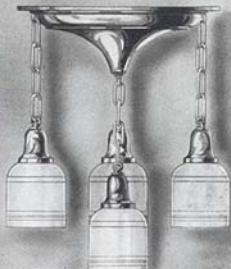
No. 3D-1512—Bath Room
Bracket, \$0.96

Extends 7 inches. Finished in polished nickel and furnished with beautiful white shade with either clear, blue, green or black stripes.



No. 3D-1504—Kitchen
Fixture, \$1.50

Length, 34 inches. Furnished with 7 inch flat opal glass reflector.



No. 3D-1502—Living Room Fixture, \$7.25

Length, 20 inches. Spread, 16 inches. The ceiling plate on this fixture is of very beautiful lines and would add beauty to any living room. Shades of white glass and can be furnished with either clear, blue, green or black stripes, as desired.

Our Mars set is created to meet the demand for neat appearing fixtures at a reasonable price. If fixtures are desired for both gas and electric, add $\frac{1}{3}$ to the price of each piece. Pull chain sockets will be furnished at an additional charge of 25c per light.

No. 3D-1514—Mars Nine Piece Set, \$22.00

Aladdin Kitchen Cabinets

Aladdin Kitchenette

The modern kitchen cabinet is one of the greatest steps toward home efficiency and convenience. Its step saving advantages to the housewife are too well known to need comment here. Three styles are shown on this page of Aladdin Kitchen Cabinets. One, of the permanent, built-in kind, is illustrated at top of page. It is built strongly of yellow pine and includes flour bin, two cutlery drawers, two paneled doors covering deep shelves below and four glass doors at top. It is 5 ft. 6 in. long, 7 ft. high and 18 in. deep at the shelf.

Price, net.....\$27.50



Aladdin Built-in Kitchen Cabinet



Briefly described as follows: 27x56½ inch sliding maple top, 38½ inches deep, open. Has tilting metal flour bin with glass front. Swinging glass sugar bin, 7 piece glass set, portable metal cake compartment, metal doors and sliding wire shelves, subdivided cutlery drawers in top. All metal bread and cake drawer. Extra heavy sliding cutting board. White enameled inside. Drop curtain made of lumber over center compartment. Weight, 300 lbs.; height, 72 inches.

No. 2A-1898—Kitchen Cabinet, as

described\$32.75

The Best Kitchen Cabinet Made.



Made of plain oak, finished golden oak, waxed. Has a sliding aluminum top 25x40 inches, a tilting metal flour bin with sifter and a glass front. Wire shelf in base and metal bottom which slides. Equipped with metal bread box. Nickel trimmings. Height, 70 inches. Weight, 180 lbs.

No. 2A-1896—Kitchen Cabinet, as

described, each\$16.95

Aladdin Disappearing Stairway

An Attic or Bungalow Stairway that absolutely disappears



The distance from front edge of stair horse to landing, when stairs is down on floor; 8 ft. ceiling is 6 ft. 6 in.; 8½ ft. ceiling is 6 ft. 11 in.; 9 ft. ceiling is 7 ft. 3 in.; 10 ft. ceiling is 8 ft. 0 in.

The large cut at top of the page shows the stairs let down for use. The second cut shows the stairs shoved up on the panel. The counterbalance now swing it into place as shown in cut at bottom of the page.

\$37.50 Net for Stairway Complete

Anyone Can Install It



Stairway when not in Use



Panel in Ceiling—looking up

How to Utilize Waste Space

WHEN arranging floor space it is often found that a stairway will take up too much space, this being more especially so in bungalows, or for attic stairs in two-story homes. The Aladdin stairway was designed to enable the builder to provide a maximum number of feet of floor space with a maximum of convenience and efficiency. The stairway consists of a strong well built flight of stairs, which is attached to the end trimming in the ceiling. It is quickly and easily attached and its advantages are apparent to any one.

Out of the Way

When the stairway is not needed it is compactly folded up in the ceiling. There is nothing visible but a neat panel, finished to match the rest of the wood work of the room. It is ready for use at a moment's notice, but still gives you full use of all the room. When needed, a slight pull on a chain provided for that purpose will bring the stairway down complete with hand rail ready for immediate use. It is down to stay until no longer desired or needed, when it can be quickly put out of sight, with but slight impulse on the part of the operator.

Easy to Operate

When stairs are not in use, they are rolled half way up on the panel (they work on rollers). A very slight push is all that is required. A spring barrel concealed under the landing does the work. When the stairs is thus pushed up on the panel, our system of counter balance does the rest; that is, swings it up into the ceiling. A child can operate it.



Place opening for stairs so that the end of stair horse, when raised in the attic, will clear ceiling or rafters. Measurements from landing to end of stair horse, when raised to close, is 5 ft. 5 in. for an 8 ft. ceiling, and 6 ft. 8 in. for a 10 ft. ceiling.

Fully Guaranteed

The stairway is shipped with the panel in the white. The stairs is stained and waxed and is fully and unconditionally guaranteed to give satisfaction, when properly installed, and if found otherwise than described by us, they may be returned and we will refund full purchase price. Furnished in Yellow Pine with a panel of either Yellow Pine or Oak. Following prices are net:

Catalog No.	Height Ceiling	Oak Panel	Yellow Pine Panel
2D-1100	7 ft. 6 in.	\$37.50	\$35.50
2D-1102	8 ft. 0 in.	38.00	36.00
2D-1104	8 ft. 6 in.	38.50	36.50
2D-1106	9 ft. 0 in.	39.00	37.00
2D-1108	9 ft. 6 in.	39.50	37.50
2D-1110	10 ft. 0 in.	40.00	38.00

Don't Fail to Get Our 1916 Catalog of Plumbing, Heating and Furniture

Three Exceptional Values in Small Farm Homes

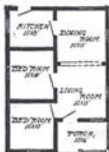


Just Look at This House at \$363, Net

by a tremendous buying power, enormous sales and the very narrowest margin of profit. Investigate quality of material, compare the design, construction and price with others. You get a good porch, living room and dining room, separated by a wide, attractive arch, two bed rooms and kitchen—and the price is \$363.00 net.

The Welton \$363.00 Net

HERE is a house that would cost under ordinary circumstances at least \$1,000. It is actually worth that price when erected. It can be sold for that price in most localities when erected. Yet our price for the complete material is only \$363.00. The price is only made possible by the most expert knowledge of material and design,



Floor Plan—
The Welton



Here's a Complete Dwelling at \$237, Net

for the average family and easily erected. The four rooms, living room, bed room, dining room and kitchen are well proportioned and make a cosy and pleasant home. This house has found great favor among Aladdin customers and never fails to please its owner. Price, \$237 Net.

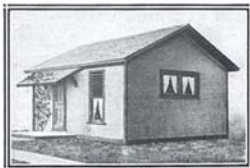
The Canton \$237.00 Net

THE Canton is a trim little house of four rooms, designed for a small family and priced for the man or woman of modest necessities. Extreme simplicity is the idea carried out, yet the house is built as sturdy and warm and strong as the most rigid climate will demand. The one greatest feature is the size, it being large enough



Floor Plan—
The Canton

The Gem \$143.00 Net



\$143 For This Home Complete

THE Gem is a very cosy little cottage. It is the last word in a house complete—its price being just \$143 net, no more. This price buys the same fine grade of lumber that is furnished for the bigger Aladdin houses and includes two 8x10 ft. rooms; all lumber, hardware, millwork, paints, nails, locks—everything shipped complete for \$143 net.



Floor Plan—
The Gem

ORDER TO
North American Construction Co.
BAY CITY, MICHIGAN



Your money will be instantly returned if what you purchase from us is not found to be entirely satisfactory in every particular and exactly as represented. Safe arrival of all material is guaranteed.

W. Sovereign President

NORTH AMERICAN CONSTRUCTION CO.



The following order is placed under the absolute guarantee of complete satisfaction to purchaser, which is printed above.

INSTRUCTIONS FOR
SHIPPING MY HOUSE

Date _____

Ship to _____

Street _____ Town _____

County _____ State _____

ORDERED BY _____

Street _____ Town _____

County _____ State _____

Enclosed please find \$ _____ for which ship me at once via

R. R. Is there a Freight Agent there? _____

Style of House _____ Shown on Catalog Page _____

LATH AND PLASTER
OR PLASTER BOARD For Inside Walls

SHINGLES OR
ROOFING For Roof

What Kind of a Foundation will you Use?

Color Paint Outside Body _____ Trim _____

Color Porch Floor _____

Inside Finish _____

TEAR HERE

EXACT WORDS OF OWNERS

SELLS BEFORE COMPLETED

Pennsylvania.

The material for my two Deltas was just as represented, the lumber being far superior to any that could be bought around here. To the doors especially I could not do justice on paper as they are perfect. There was no waste and as to saving I sold both houses before they were finished at \$1000 apiece. I can heartily recommend you to anyone. ROBT. J. GRIGGS. Complete address furnished on request.

PERFECT IN EVERY RESPECT

Kansas.

I am glad to say that my "Forsyth" bungalow is perfect in every respect material being of fine quality and abundant quantity. Our head carpenter who just finished his house says if he were to build again it would be an Aladdin. On the whole we are well pleased and glad to recommend Aladdin houses.

ROSS MCKINNON.

Complete address furnished on request.

SAVED \$450

Pennsylvania.

I am perfectly satisfied with my home and dealings with you. I expect to build a house for my son soon and want your new catalog. In round figures I saved \$450. and am glad to recommend you.

J. G. STRAUB.

Complete address furnished on request.

SAVED \$1,000

Pennsylvania.

We have been living in our new home the "Detroit" bungalow and want to say it is simply fine. We are proud of it and saved \$1000. on our house, barn, and heating plant. Does it pay? Well I guess it does, and if we ever build again you will furnish the material. Hope we will see many more Aladdins in our town. B. P. WYNING.

Complete address furnished on request.

CARPENTER PRAISES MATERIAL

Pennsylvania.

My "Florence" bungalow is a beauty and everyone is amazed at the completeness of the six rooms and bath. I want to thank the entire office force for their attention in all my business relations. The contractor who assembled the "Florence" praised everything and said he could not furnish the lumber for anywhere near the price paid. Watch me boost for Aladdin houses.

M. L. HENGIST.

Complete address furnished on request.

SAVED \$280 ON LUMBER DEALER'S FIGURES

Dakota.

I am surely well pleased with my Aladdin, "The Maples No. 1." The material was O. K., and plenty of it, no shortage; in fact over run. I figured that I saved \$280.00, as I had three different parties figure before I bought, and that is the actual difference in price, and I think I got better lumber. In fact, I know I did, as you can't find a single knot in any of the finish. Respectfully,

DR. E. E. GREGORY.

Complete address furnished on request.

SAVED \$200—BUILT HOME HIMSELF

Pennsylvania.

I saved at least \$200 on my Aladdin home, "The Jersey," compared with the price of lumber here. I did all the work, building foundation and erecting house, with my father to help, and we are not carpenters. We had very little trouble, as every piece fitted very nicely.

The outside and inside finish was very fine lumber, and I am well satisfied. Will build another one this fall. Found everything complete. Yours respectfully,

CHAS. GILBERT.

Complete address furnished on request.

5 Room Cottage \$ 298 Home Complete



THE EMERALD \$298 Net

THE Emerald is fresh from Aladdin's designing room—a charming home. We christened it the "Emerald" because it has so much value compressed into a relatively small space. It is certainly a jewel of the first water in design, appearance, and in convenience.

Shingled walls, which may be left to weather or may be stained any shade you desire, from the emerald green of the forest to the deep golden browns of autumn foliage. Our picture shows the sash and eaves touched with white—a splendid contrast. Roughly hewn brackets support the projecting eaves and the hooded entrance. Note the casement sash set in a mullion frame—distinctive. The red brick chimney enhances the general effect.

The interior affords five rooms conveniently arranged. The living room stretches across the front of the house and opens full width into the dining room. Two bed rooms and kitchen complete a little home that will delight its owner and friends. And \$298 pays for it. Can you imagine greater value—a cosy, snug little home for less than \$300. Of course, this price does not include the chimney, nor the Colonial seat at the front. This seat may be had for \$9.60. The material for the chimney is always procured locally. Can't you imagine this little cottage nestling 'neath a spreading oak, flower bordered and inviting—*your home?*

See Terms on page 2 and General Specifications on pages 12 and 13.



Beautiful clear interior finish, in fact the same grades of material are furnished for the Emerald as for our large and more expensive homes. Send for detail specifications. 24 hour shipment.

EVERY HOUSE IN THIS TOWN AN ALADDIN



See page 14 for reference to the houses shown in these photographs.



Actual photographs of communities and towns built completely of Aladdin houses.

Additions	93-94
Albany	79
Auburndale	82
Barns	101-104
Breakfast Rooms	84
Brentwood	41-42
Brighton	22
Built-In Fixtures	22
Burbank	89-90-91-92-114
Carmen	73-74
Carnation	70
Carolina	60
Castle	45
Charleston	61
Chester	51
Chester	36
Colonial	31
Countrywide	15
Cumberland	62
Detroit	20
Doors	105
Dresden	30
Duplex	83
Eden	32
Edison	52
Electric Fixtures	108
Elkridge	79
Emerald	117
Englewood	89
Eric	34
Finley	37
Florence	57-58
Forsyth	65

INDEX

Furnaces	109-113
Furniture	109-113
Garages	99-100
Georgia, No. 1	55
Georgia, No. 2	76
Gem	116
Grant	19
Gretna	49
Hamilton	47
Herford	26
Hopeton	47
Hudson	33
Interiors	29-39, 81-88
Introductory pages	2-14
Kentucky	24
Lamberton	44
Loota	66
Maple	85
Marsden	17-18
Massachusetts	43
Merchandise	109
Michigan	23
Newton	63
Piazza	108-107
Plaza	86
Plumbing	109-113
Pomona	50
Princeton	56
Ravenwood	59
Raymond	46

Richmond	53
Ridgway	79
Rochester	35
Rodney	48
Roland	37
Romeo	71
Rosewood	25
Rossley	24
Ruby	34
Selwyn	25
Service Department	40
Sheffield	64
Sheridan	38
Sherwood	45
Stairway	115
Standard	98
Stanhope	75
Strathmore	78
Suburban	77
Summer Cottages	95-98
Thelma	15
Tremont	116
Tucson	83
Vassar	54
Villa	27
Virginia	21
Warren	69
Washington	82
Welton	116
Wilmet	71
Wilson	72
Winthrop	87
Yale	67



ALADDIN HOMES

Manufactured by the
North American Construction
Company of Bay City, Michigan

Home of Aladdin
at Bay City, Michigan



EVIDENCE OF ALADDIN'S LEADERSHIP



PANAMA PACIFIC INTERNATIONAL EXPOSITION

ALADDIN has been honored the past two or three years in different ways, but is most proud of the medals awarded by two great expositions. The Panama-Pacific International Exposition, that most wonderful of all great World's Fairs, and the Michigan Agricultural Exposition granted "Les Grandes Prix," the latter issuing a diploma as shown in the photograph below. The Panama-Pacific Medal was issued upon the Model Cottage which Aladdin produced and erected for Uncle Sam, while the Michigan Exposition Medal was the result of our building a Kentucky bungalow at the fair for the Northeastern Michigan Development Bureau. Official record is

made in the Diploma that the North American Construction Company originated, perfected and established the Read-Cut System of Construction. These facts are quoted here merely as additional evidence of Aladdin's leadership in all things pertaining to Scientific Home Building. But the greatest test of leadership is the universal record of satisfaction to our customers.



State of Michigan

Whereas, it is the province of the Michigan Agricultural Society to recognize and award in substance of improvements both along Agricultural and Industrial lines; and
Whereas, the construction of time and material in the construction of buildings is directly along the line of such improvements; and
Whereas, the Model Cottage constructed by the North American Construction Company for the Northeastern Michigan Development Bureau, which house has been recently erected on the grounds of the Michigan Agricultural Society, is a strong demonstration of saving of expense in building by scientific, practical, economical and successful conservation of materials in the construction of models in both material and labor; and
Whereas, the North American Construction Company originated, perfected and established the Read-Cut System of Construction; therefore it is
Resolved, That the Michigan Agricultural Society does hereby award to the North American Construction Company a certificate of merit consisting of a Gold Medal suitably inscribed, and the same is hereby authorized.

Sept 8
J. W. Robinson

THE FIRST NATIONAL BANK

INCORPORATED IN ILLINOIS
 CAPITAL PAID UP \$1,000,000
 RESERVE FUND \$1,000,000
 SURPLUS FUND \$1,000,000
 TOTAL ASSETS \$3,000,000

UNITED STATES DEPOSITORY

CAPITAL \$1,000,000
 SURPLUS \$1,000,000

RAY BERT, CHICAGO

Dec. 1, 1915.

To Aladdin Customers:

We are pleased to testify to our confidence in the North American Construction Company and to assure you that any confidence you extend to them will be most honorably treated.

The men behind this organization, who are perfectly responsible financially and otherwise, are all personally known to us, as is their integrity and upright business policy.

This company originated, perfected and established the Ready-Cut system of Construction, and is the pioneer as well as the largest manufacturer of houses that we know of.

You may have full confidence that the representations of this company will be fully lived up to.

Very truly yours,

Springer & Baker
 Cashier.

ALADDIN
HOMES

