

CONFIGURATION AND TYPICAL WIRING DIAGRAMS

White **1F80-224 / 1F80-240 / 1F80-241/1F80-361**
Rodgers **1F86-241 / 1F86-344 / 1F87-361**

CONFIGURATION

The following table allows you to customize the options on your Comfort-Set thermostat.

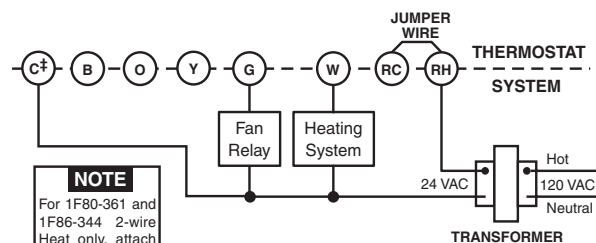
| Configuration Menu | | | | | | | Press Button(s) | Displayed (Factory Default) | Press \odot or \ominus to select: | COMMENTS |
|--------------------|-----------|----------|----------|----------|----------|-----------------|-----------------------------------|-----------------------------|---|--|
| 1F80-224 | *1F80-240 | 1F80-241 | 1F80-361 | 1F86-241 | 1F86-344 | 1F87-361 | | | | |
| Step | Step | Step | Step | Step | Step | Press Button(s) | | | | |
| 1 | 1 | 1 | 1 | N/A | N/A | 1 | PRGM and RUN | HOLD (0:00) | 0 to 8 hrs (in 15 minute increments) | Select temporary Hold time |
| N/A | N/A | N/A | N/A | 1 | 1 | N/A | Set SYSTEM switch to OFF | | | SYSTEM switch must be OFF to configure thermostat options |
| 2 | 2 | 2 | 2 | 2 | 2 | HOLD* | * | ϕ (FA) | SL | Select FA or SL (Fast or Slow) heating cycle rate |
| 3 | 3 | 3 | 3 | 3 | 3 | HOLD* | * | d-L (ON) | OFF | Select display backlight OFF or ON |
| N/A | 4 | 4 | 4 | N/A | N/A | HOLD* | * | E (ON) | OFF | Select Energy Management Recovery OFF or ON |
| N/A | 5 | N/A | 5 | N/A | 4 | HOLD* | * | Filter (000) | 0 to 1950 hours (in 50 hour increments) | Select filter replacement run time |
| 4 | N/A | 5 | 6 | 4 | 5 | HOLD* | * | LOC (OFF) | ON | Select Compressor lockout OFF or ON |
| 5 | 6 | 6 | 7 | 5 | 6 | HOLD* | * | 0 HI (0) | 4 LO to 4 HI | Select temperature display adjustment higher or lower |
| 6 | 7 | 7 | 8 | 6 | 7 | HOLD* | * | $^{\circ}$ (F) | $^{\circ}$ C | Select temperature display to $^{\circ}$ F or $^{\circ}$ C |
| 7 | 8 | 8 | 9 | N/A | N/A | RUN | RUN | | | Returns to normal operation |
| 8 | *9 | N/A | N/A | 7 | 8 | | Set SYSTEM switch to HEAT or COOL | | | Returns to normal operation |

* 1F80/1F87 - Press **HOLD** to advance to next item or **TIME** to move backwards to previous item

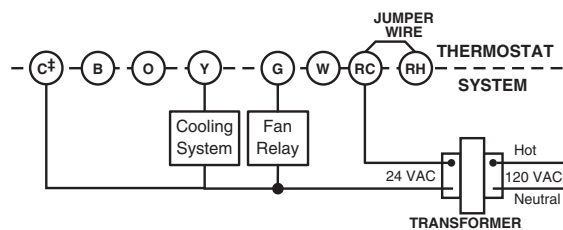
1F86 - Press \odot and \ominus to advance to next item

1F80-240 is HEAT only

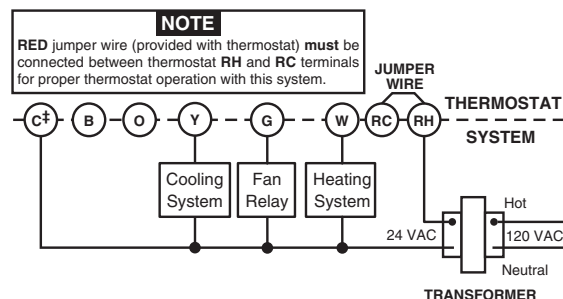
TYPICAL WIRING DIAGRAMS



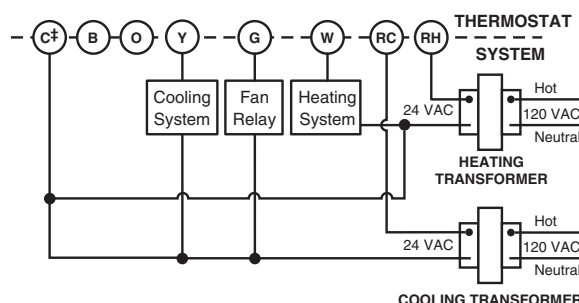
Heat only, 3-wire, single transformer systems



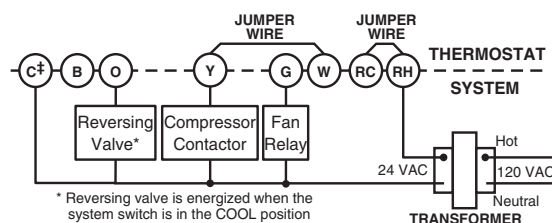
Cool only, 3-wire, single transformer systems



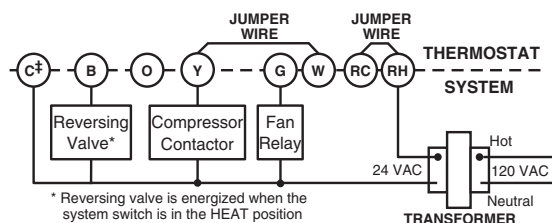
Heat/cool, 4-wire, single transformer systems



Heat/cool, 5-wire, two-transformer systems



Heat pump with reversing valve energized in COOL



Heat pump with reversing valve energized in HEAT