

Art. 24
Leaf-grate and/or gravel-grate suitable for roof drains from mm.60 Ø to mm. 160 Ø



Art. 24.2
Suitable for roof drains from mm. 60 Ø to mm. 200 Ø

Art. 24.1
Suitable for roof drains from mm. 60 Ø to mm. 200 Ø



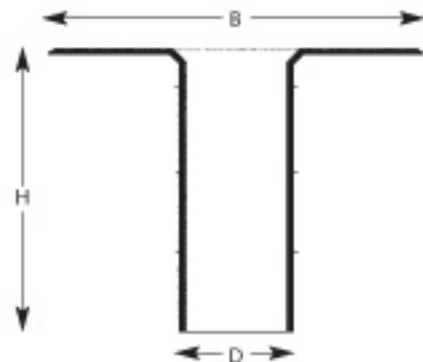
Buttonhole plates for gravel-grate



ITALPROFILI® **TPO ROOF DRAIN**, has the same characteristics of the Antibackup Roof Drain. It can be used on roofs covered with TPO synthetic membranes, the difference is on the smooth flange for an easier application with the synthetic waterproofing systems such as TPO.

[CLICK ANYWHERE on THIS PAGE to FLAT & LOW-SLOPE ROOF DRAIN SYSTEMS at InspectApedia.com](https://www.inspectApedia.com)

ART.	1.3	13.3	21.3	14P	22.3	16.3	23.3	17P	112P
DENOM	60	75	80	90	100	110	125	140	160
B	245	300	310	320	325	335	350	360	385
H	250	250	250	250	250	250	250	250	250
D	54	66	73	83	92	100	116	132	148



Art. 115.2
Internal corner side mm. 100



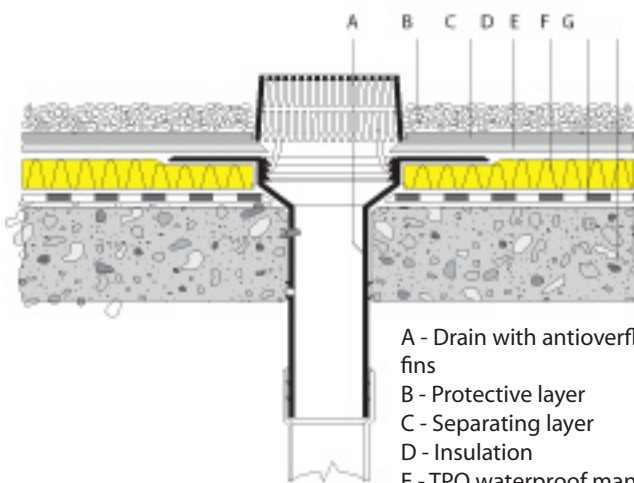
Art. 116.2
External corner side mm. 110



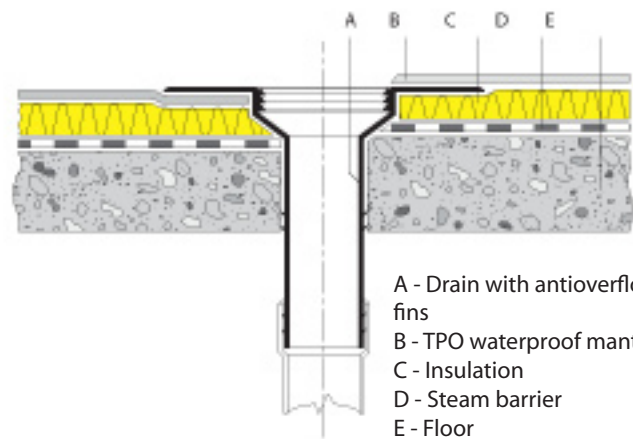
H mm. 330



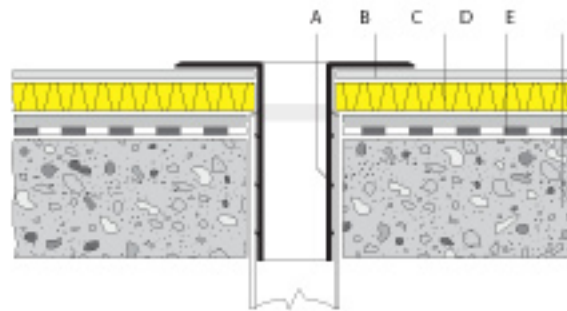
H mm. 250



- A - Drain with antioverflow fins
- B - Protective layer
- C - Separating layer
- D - Insulation
- E - TPO waterproof mantle
- F - Vapor barrier
- G - Floor



- A - Drain with antioverflow fins
- B - TPO waterproof mantle
- C - Insulation
- D - Steam barrier
- E - Floor



- A - Drain with antioverflow fins
- B - TPO waterproof mantle
- C - Insulation
- D - Steam barrier
- E - Floor

INSTALLATION MANUAL OF THE NEW DRAIN - H 330 mm.

Complete spreading of the TPO membrane, drill the membrane by the rain drain, insert the drain into the pipe, weld the flange on the membrane with hot air. "Alternatively adhesives suitable for stabilized TPO. may be used", insert the ring impregnated with adhesive, connect the leaf grate and/or gravel grate to it.

N.B.: If necessary, the flange can be fixed on top of the membrane.

INSTALLATION MANUAL OF ROOF DRAIN - H 250 mm.

Complete spreading of the TPO membrane, lay the membrane by the rain drain, insert the drain into the pipe, weld on the membrane with hot air. "Alternatively, use adhesives suitable for stabilized TPO", insert the leaf grate and/or gravel grate in their housing.

N.B.: If necessary, the flange can be fixed on top of the membrane.

DESCRIPTION OF SPECIFICATIONS PVC ANTIBACKUP ROOF DRAIN - H mm. 330

Supply and laying of ITALPROFILI® drain of the New type of stabilized TPO with a smooth flange 400x400 mm., a flat funnel 30 mm. high, diameter 170 mm., an anti-backup shaft 330 mm. high, suitable for pipes with a Ø of..... complete with leaf grate and/or gravel grate gap 6 or 14 mm.).

DESCRIPTION OF SPECIFICATIONS PVC ANTIBACKUP ROOF DRAIN - H mm. 250

Supply and laying of Universal stabilized TPO drain with an anti-backup shaft 250 mm. high suitable for pipes with a Ø of..... with a smooth flange provided with the connection for Leaf grate / Gravel grate .